

The background of the slide is a faded image of the Chula Vista Fire Department station. The station is a modern building with large glass windows and doors. A red fire truck is parked in front of the station. The text "CHULA VISTA FIRE DEPARTMENT" and "841 ORANGE AVENUE" is visible on the building's facade.

# **City of Chula Vista Fire Department**

**Measure A Citizens' Oversight Committee Presentation  
April 22, 2024**

## **Fire Department Training Facility**

**Seeking the recommendation of the Measure A Citizen's Oversight Committee to confirm the use of Fire Department Measure A fund balance to acquire property and develop a purpose-built fire training facility.**



## **Fire Department Training Facility**

### **Chula Fire Station 4/CVFD Training Division**

- **850 Paseo Ranchero**
  - Approximately 1.5 acres
- **Fire Station**
- **Training Division Offices**
- **Training Grounds and Training Tower**

**\*\*\*Station 4 opened in 2001**

**\*\*\*Training Division added onto in the 2002**

# Fire Department Training Facility

- **Fire Station 4**

- Houses 1 engine and staffed by 4 personnel
- Reserve engine and ambulance

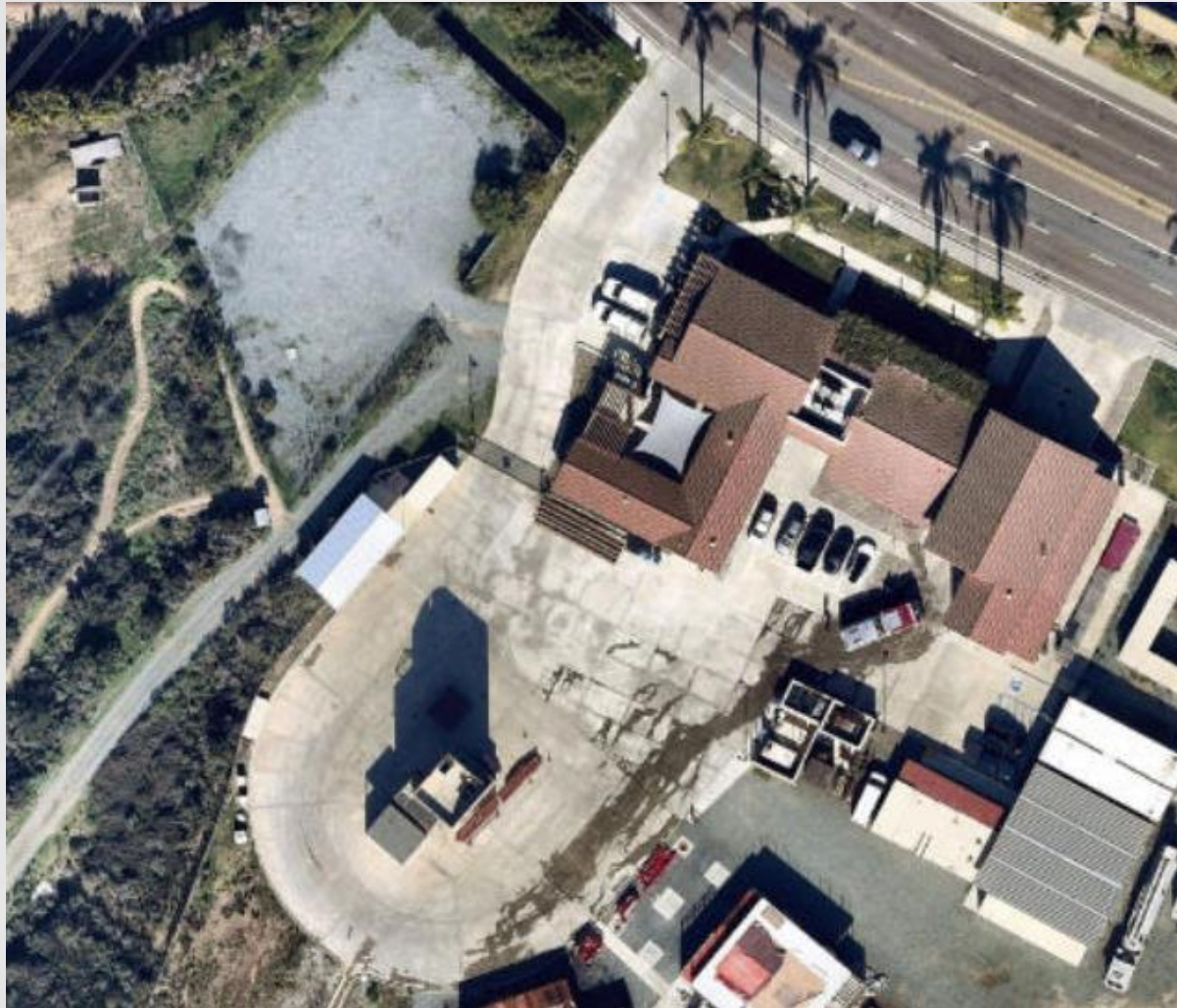
\*\*\*Eventually will have an additional response unit from the station

- **Training Division**

- Permanent staff of 4
  - Volunteers, modified duty, and interns frequently assigned
- Additional rotating staff depending on needs
  - Dictated by training programs
- Classroom for 24-people
- Locker room for the assigned training staff



## Fire Department Training Facility



## **Fire Department Training Facility**

### **Training Division and Station 4 capacity struggles**

- **Parking with Station 4 crews**
- **Washer and dryers**
- **Decontamination equipment for Personal Protective Equipment (PPE)**



# **Fire Department Training Facility**

## **Training Facility Daily Use**

- **Fire and Ambulance Transport Service Academies**
- **In Service Training**
  - All operations personnel
- **Specialized Classes**
- **Promotional Exams**
- **Driver Training**
- **Company and Battalion Level Training**
- **Health and Wellness Programs**
- **Workforce Development**
- **Community Meeting Room**

# Fire Department Training Facility





# Fire Department Training Facility



## **Fire Department Training Facility**

### **To accommodate the daily use:**

- **3 modular classrooms**
- **Rent restroom facilities**
- **Rent heavy equipment for classes and facility upkeep**
- **Shipping containers converted into PPE locker rooms, workshop, and storage**
- **Search for off-site opportunities and locations to train**
- **Built temporary training props**
  - Live Fire
  - Ventilation
  - Confined Space



## **Fire Department Training Facility**

### **Administrative Needs to Facilitate Daily Use**

- **Classrooms and Conference Rooms**
- **Office space Training Division Staff**
- **Facilities for up to 40-Personnel**
- **Kitchen and Dining for up to 40-Personnel**
- **Parking and Apparatus Storage**
- **General Storage**
- **1500 sq ft Shop**
- **Wellness Gym -indoor and outdoor**
- **Hose and Ladder Testing Area**

# **Fire Department Training Facility**

## **Operational Needs**

- **Training Tower that mimics High Rise Risks**
- **Commercial and Residential Burn Simulators**
- **Roadways for Emergency Vehicle Operations Course**
- **Underground Water Cistern, Pump, Hydrants and Spray Wall**
- **Rescue Based Training Props**
- **Personal Protective Equipment (PPE) Cleaning and Storage**
- **Heavy Equipment to Operate Facility**
- **Minimum of 2 Engines and 1 Truck**



## **Fire Department Training Facility**

**These needs have created the following issues...**

- **Academy sizes must be capped due to facility capacity**
- **Ensuring adequate facilities for a diverse workforce**
- **Scheduling conflicts**
  - Requesting assistance from other agencies and City departments
- **Damage to tools, equipment, vehicles, and apparatus**
- **Creating temporary training props and simulators**
- **Expenses which can be reduced or removed**

## Fire Department Training Facility

### How do we meet these needs?

- **Current 1.5 acres does not have the capacity**
- **Finding the appropriate property to build upon**
  - 8-12 acres
  - Flat and buildable
  - Ideally centrally located or in the western side of the City
  - Anticipate spending up to \$1,000,000 per graded and unrestricted acre
- **Considered locations can be near Broadway or Main St.**
  - These options would create additional steps



## Fire Department Training Facility

**Viable choice would be the property adjacent to Station 4**

### **Previously identified for Rancho Del Rey Library**

- Millenia Library satisfies the requirements stated in Library Master Plan
- **Approximately 4-acres**
  - Same Parcel as Fire Station 4
- **Unimproved Land**
  - No infrastructure
  - Fence surrounding the property to provide security.



# Fire Department Training Facility





## **Fire Department Training Facility**

### **To acquire the additional property at 850 Paseo Ranchero**

- **A land acquisition transaction must occur**
  - Will allow transfer of 4-acres previously identified for Rancho Del Rey Library
- **Requires swapping approximately 8-acres of MSCP land**

## **Fire Department Training Facility**

### **Benefits of establishing a permanent Fire Department training facility**

- **Bridge public safety goals of the City and Fire Department**
  - Increase new hire academy numbers
  - Facilitate mandatory and ongoing training requirements
  - Create an additional and up to date EOC
  - Limit costs incurred from renting heavy equipment
  - Provide areas for community groups to meet
  - Minimize use of facilities outside of Chula Vista
  - Create a “Safety City” for grade school children



## **Fire Department Training Facility**

### **Next steps...**

- **Establish Capital Improvement Program (CIP) line item for the facility**
- **Appropriate \$15.2 million from Fire Department Measure A fund balance**
- **Move future year's fund balance to the CIP line item**
- **The ongoing fiscal impacts will be an annual transfer of available excess fund balance above the required reserve balance until there is sufficient funds to design and build the training center**

# Fire Department Training Facility

**Questions?**