



Item 9.1

**Homeless Encampment
Cleanup Update**



Encampment Restrictions

Division XII, Preservation of Public Property

Chapter 9.90 Campsites and Other Obstructions on Public Property

As of October 31, 2024 prohibits anyone from:

- **Camping within 1,000 feet of schools and City emergency shelters; in and 1,000 feet around City parks and major transit stops; and in sensitive conservation areas; and**
- **Sitting, lying, sleeping, or storing personal property on certain public property where ADA access would be blocked, City permits have been issued, or intended for vehicle or bicycle use.**

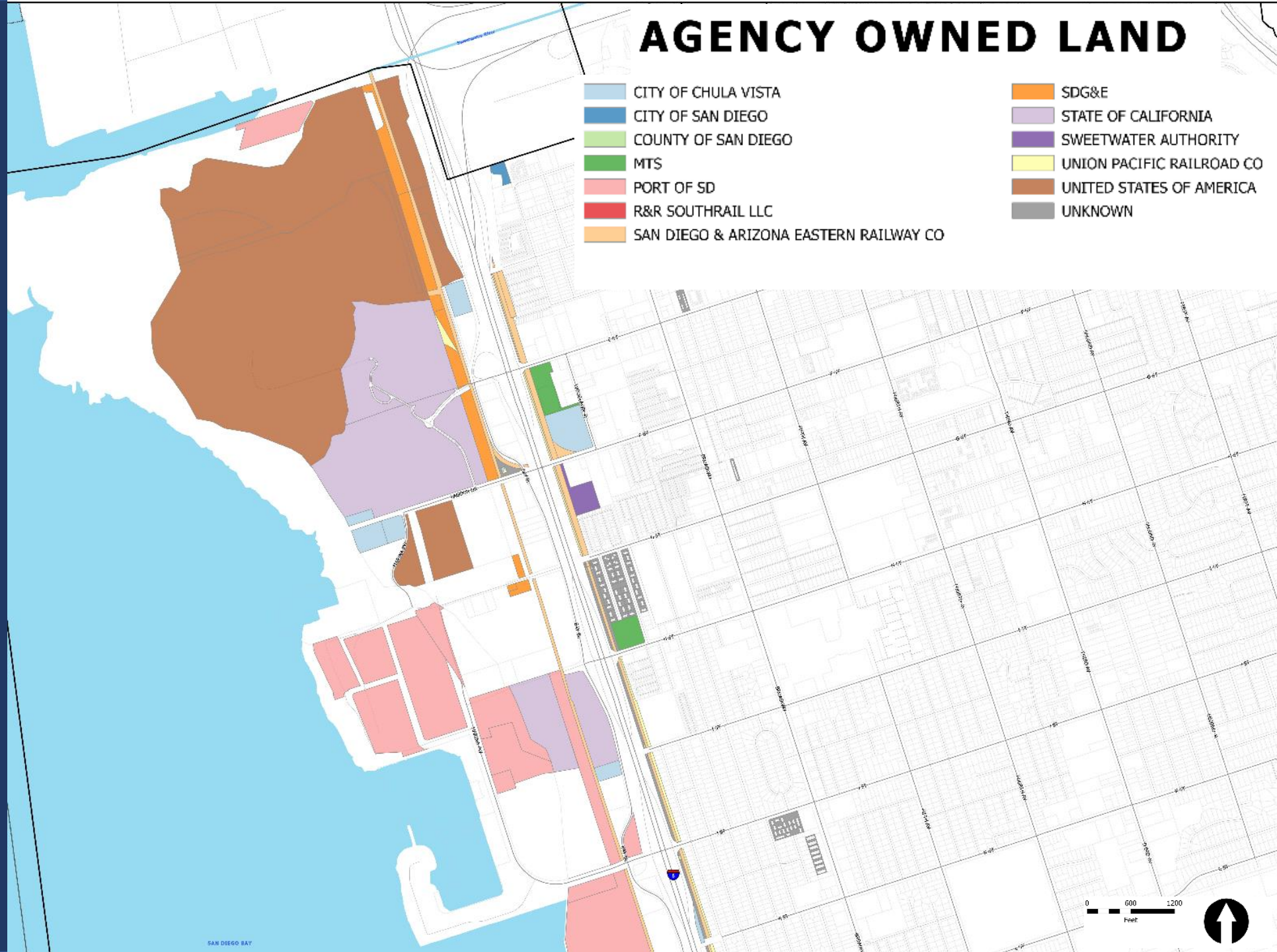
Current Challenges

- **Impact on service providers due to COVID funds ending**
 - Potential need to increase staff or contract for valued services
- **Since Encampment Restrictions took effect (October 31, 2024):**
 - Increased transient activity
 - Increased encampments on private property and other agency lands





Challenges along Bayfront/ I-5 Corridor





November 2024 – February 2025



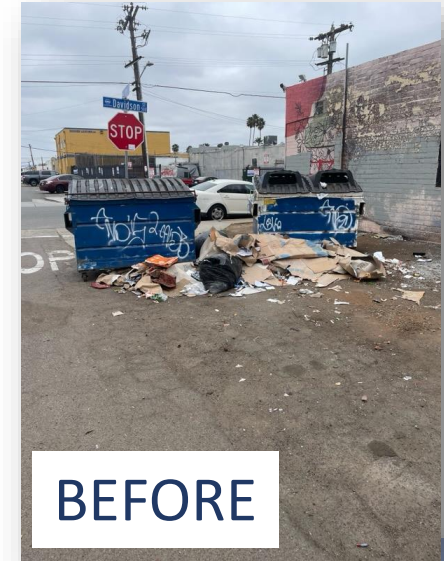
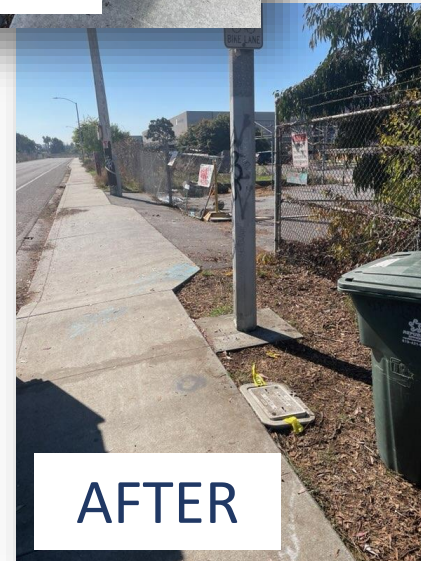
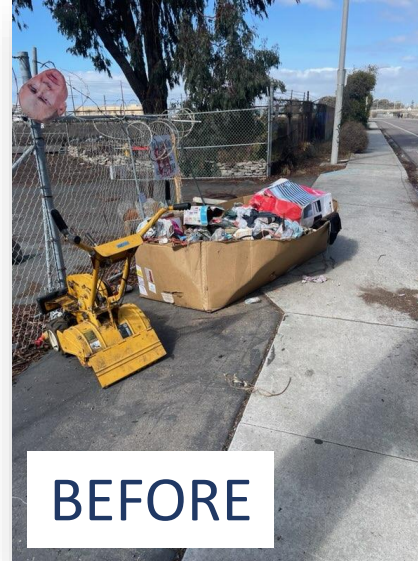
Clean-Up Efforts



*123,320 pounds
Trash & Debris*



420 Shopping Carts





November 2024 – February 2025



Housing Connections



- 9 new clients
- 10 positive exits

Over 60 connected to other housing resources



Next Steps

- **Operational Funds**
 - **Phase II Operational Efficiencies**
 - **Shelter Operator RFP**



- **Strategic Plan**