



**PORT of
SAN DIEGO**
Waterfront of Opportunity

Port of San Diego Update for the Chula Vista City Council

Secretary Ann Moore



Gaylord Pacific – Grand Opening 2025!





Gaylord Pacific Construction





PFI

Mott MacDonald

MCCARTHY



Gaylord Pacific – Grand Opening 2025!





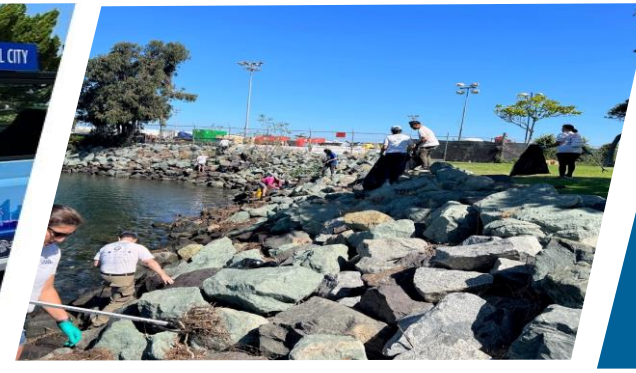
Sweetwater Park Construction Update





Bayfront Park Pavement Project





\$125M

Electrification and
Emissions Reduction

10

Blue Economy Incubator
Projects

\$2.6M

Maritime Industrial
Impact Fund

+30,000 lbs.

Trash and Debris Removed



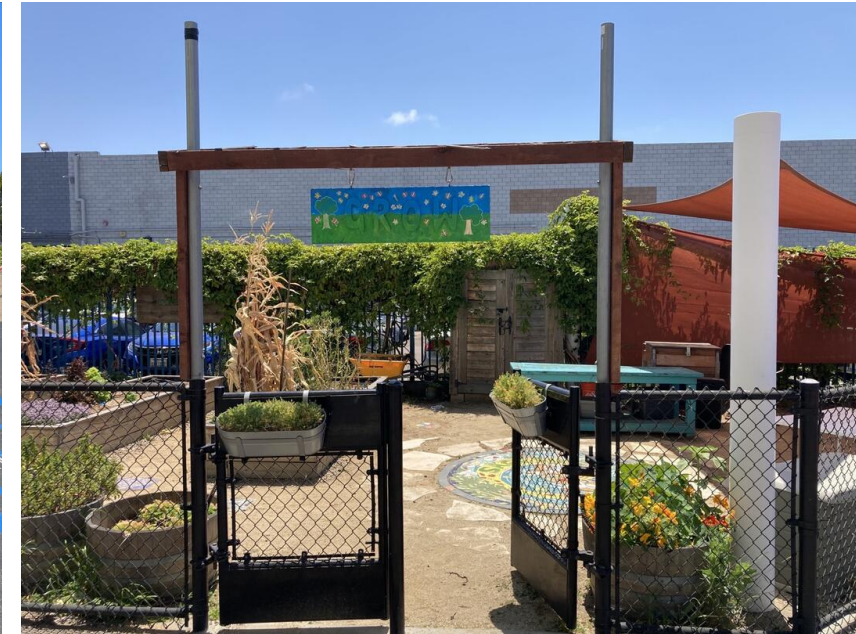
Maritime Industrial Impact Fund (MIIF)

\$2.6 Million Invested

- City of National City MOU Free Rides Program (FRANC) - \$400,000
- Monarch School Garden and Nutrition Program - \$20,000
- Clean Air Action Plan - \$12,930
- Residential Air Filters Portside Community - \$103,000
- Residential Lodging During the Navy Vessel Fire - \$96,939
- Air Filters for Perkins Elementary - \$488,165
- Bayshore Bikeway (National City segment) - \$900,000
- Barrio Logan Nighttime Noise Study - \$116,710
- Working Waterfront Noise Study - \$2,950



Free Rides Around National City Program



Monarch School Garden and Nutrition Program



Maritime Clean Air Strategy - 2030 Goals

Vision Statement: Health Equity for All



Trucks: 100% ZE truck trips by 2030 for all trucks that call to the Port's two marine cargo terminals. 40% ZE truck trips by 2026.



Cargo Handling Equipment: Transition diesel cargo handling equipment to 100% ZE by 2030.



Harbor Craft: Tugboat diesel emissions reduced 50% through transition to Zero / Near-Zero Emission technologies and/or other lower-emitting engines or alternative fuels.



Port Fleet: Transition to 100% Zero / Near-Zero Emission technologies.



Ocean-going Vessels: Equip marine terminals with shore power and/or an alternative technology to reduce ocean-going vessel emissions for ships that call to the Port.



SKYCHARGER

Skyview Ventures
POWERING INDEPENDENCE

BURNS & MCDONNELL



Crowley eWolf



San Diego County
Air Pollution
Control District



CALIFORNIA
AIR RESOURCES BOARD



All Electric Mobile Harbor Cranes

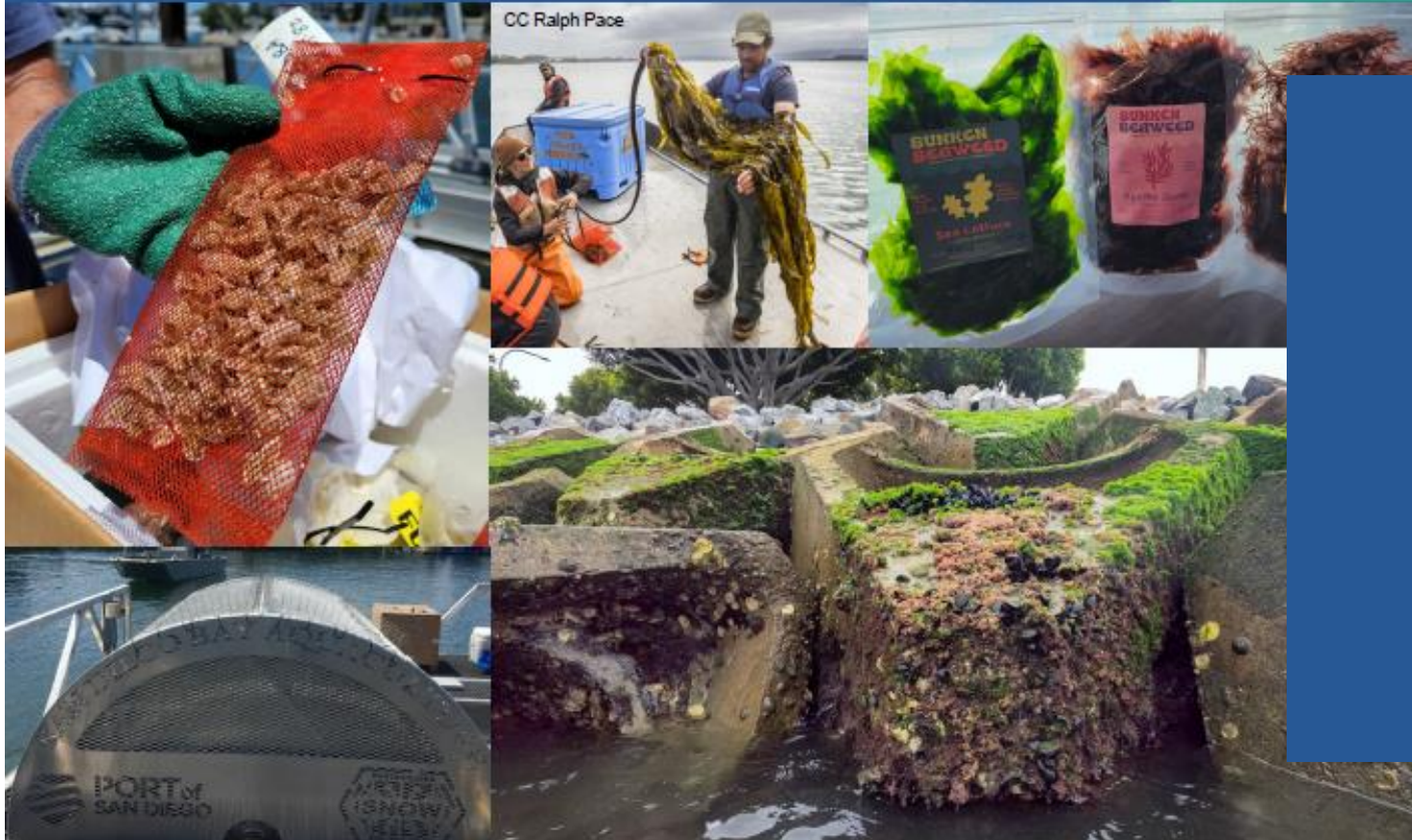




Blue Economy Incubator

BLUE ECONOMY INCUBATOR HIGHLIGHTS
FIFTH EDITION

2



BEI Value Proposition – Pilot Project Facilitation

- Funding
- Port-based pilot sites
- Regulatory and permitting assistance
- Subject matter expertise
- Strategic stakeholder collaboration
- Public Relations and media visibility
- Support to leverage grant and investment opportunities



Native Oyster Living Shoreline

SOFT SHORELINE SOLUTIONS

Project Site
*Chula Vista
Wildlife Reserve*





Freedom Park at Navy Pier





Pepper Park Improvements





Harbor Park Update



Thank you



**PORT of
SAN DIEGO**
Waterfront of Opportunity