

# PROPOSED BOUNDARY OF COMMUNITY FACILITIES DISTRICT NO. 2024-1 (CITRUS BAY) CITY OF CHULA VISTA COUNTY OF SAN DIEGO, STATE OF CALIFORNIA

I HEREBY CERTIFY THAT WITHIN THE MAP SHOWING PROPOSED BOUNDARIES OF COMMUNITY FACILITIES DISTRICT NO. 2024-1 (CITRUS BAY), CITY OF CHULA VISTA, COUNTY OF SAN DIEGO, STATE OF CALIFORNIA, WAS APPROVED BY THE CITY COUNCIL OF THE CITY OF CHULA VISTA AT A REGULAR MEETING THEREFOR, HELD ON THE \_\_\_\_\_ DAY OF \_\_\_\_\_, 2024, BY ITS RESOLUTION NO. \_\_\_\_\_

\_\_\_\_\_  
CITY CLERK  
CITY OF CHULA VISTA

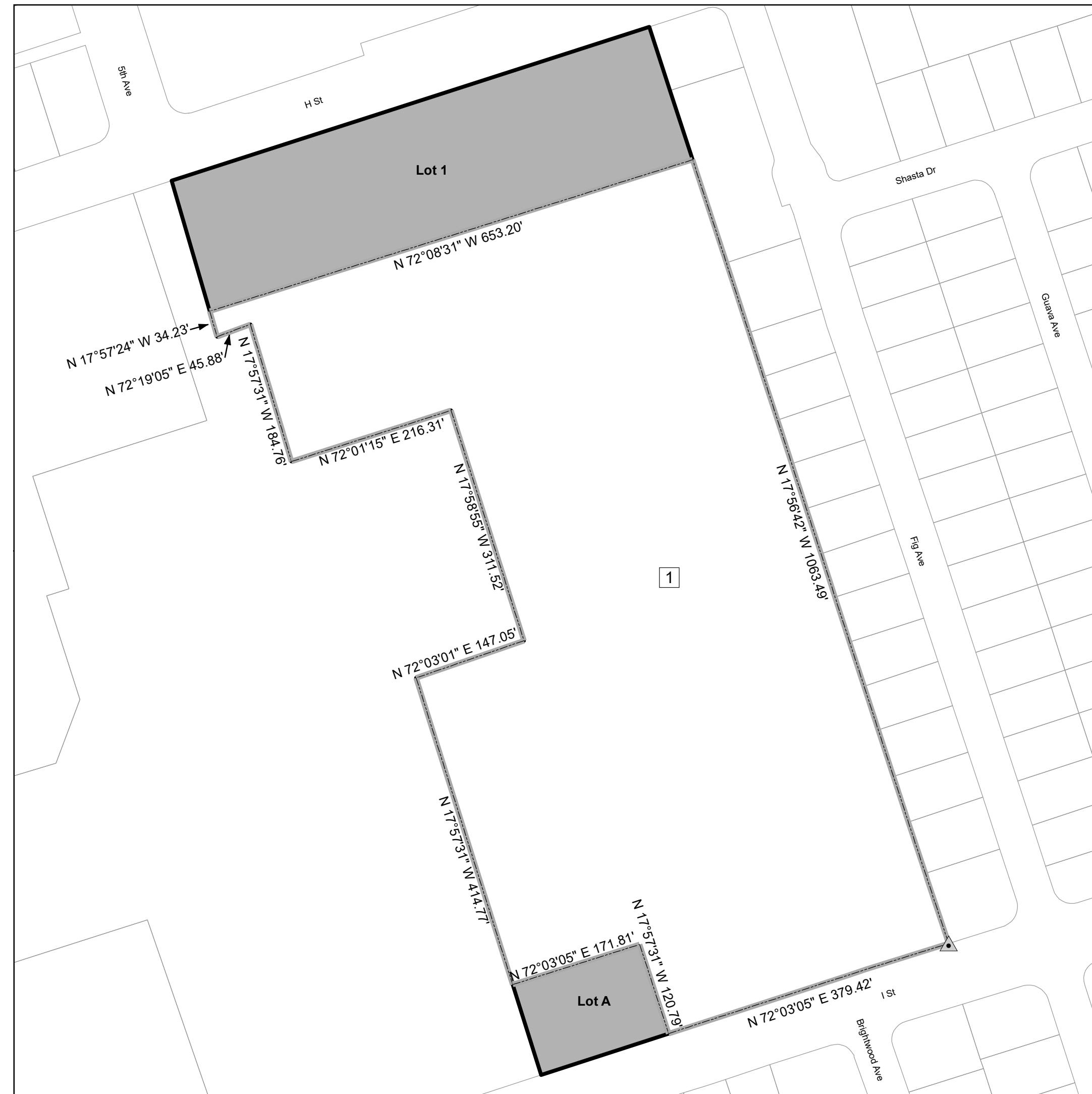
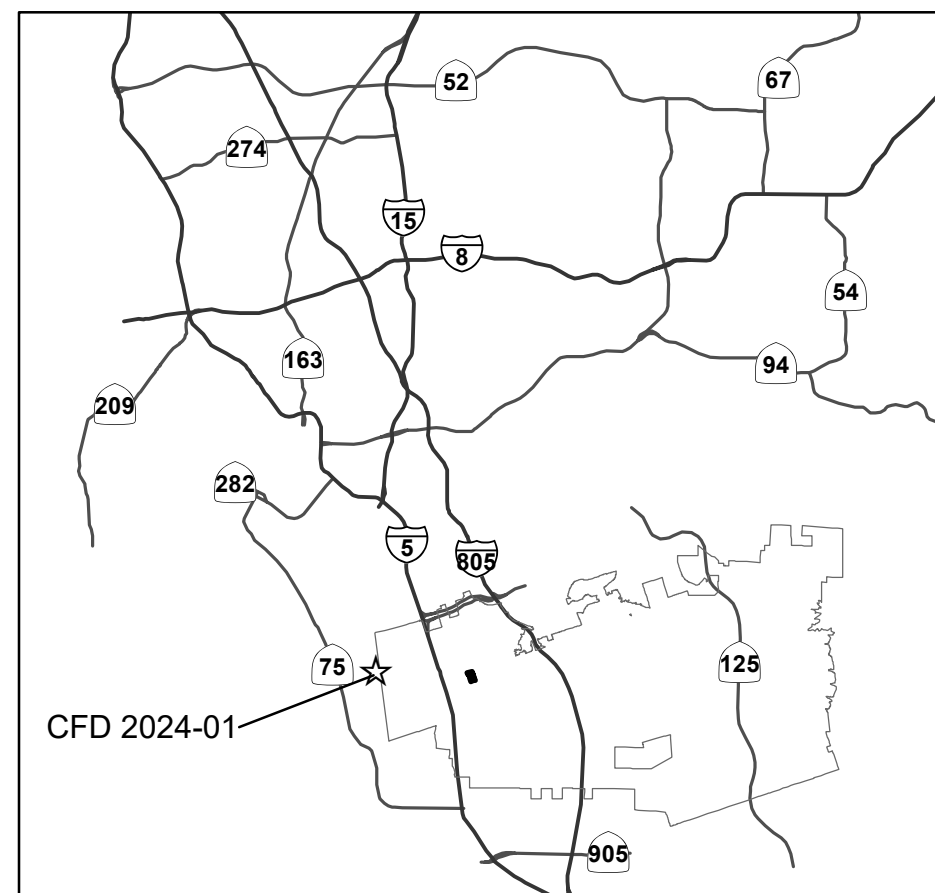
FILED IN THE OFFICE OF THE CITY CLERK, CITY OF CHULA VISTA, THIS \_\_\_\_\_ DAY OF \_\_\_\_\_, 2024.

\_\_\_\_\_  
CITY CLERK  
CITY OF CHULA VISTA

RECORDED THIS \_\_\_\_\_ DAY OF \_\_\_\_\_, 2024 AT THE HOUR OF \_\_\_\_\_ O'CLOCK \_\_\_\_\_ M IN BOOK \_\_\_\_\_ PAGE \_\_\_\_\_ OF MAPS OF ASSESSMENT AND COMMUNITY FACILITIES DISTRICTS IN THE OFFICE OF THE COUNTY RECORDER, IN THE COUNTY OF SAN DIEGO, STATE OF CALIFORNIA

FEE: \_\_\_\_\_ NO. \_\_\_\_\_  
JORDAN Z. MARKS, ASSESSOR, RECORDER,  
COUNTY CLERK

BY: \_\_\_\_\_  
DEPUTY



**Legend**

- Point Of Commencement
- Special Tax Boundary
- Current Parcel Boundary
- Parcel Boundary
- Lots

MAP REFERENCE NO.	ASSESSOR PARCEL NO.
1	Portion of 572-010-44

Coordinate System: NAD 1983 StatePlane California V FIPS 0406 Feet  
 Projection: Lambert Conformal Conic  
 Datum: North American 1983  
 False Easting: 6,561,666.666666666  
 False Northing: 1,640,416.666666667  
 Central Meridian: -116.25  
 Standard Parallel 1: 32.78333333333333  
 Standard Parallel 2: 33.88333333333333  
 Latitude Of Origin: 32.16666666666666

HARRIS & ASSOCIATES  
101 PROGRESS, SUITE 250  
IRVINE, CALIFORNIA 92618  
800-827-4901

THE LINES AND DIMENSIONS OF EACH LOT OR PARCEL SHOWN ON THIS MAP SHALL BE THOSE LINES AND DIMENSIONS AS SHOWN ON THE SAN DIEGO COUNTY ASSESSOR'S MAPS FOR FISCAL YEAR 2023-2024.

Being a Portion of Sections 03 and 04  
T. 18S R. 02W  
San Diego County

