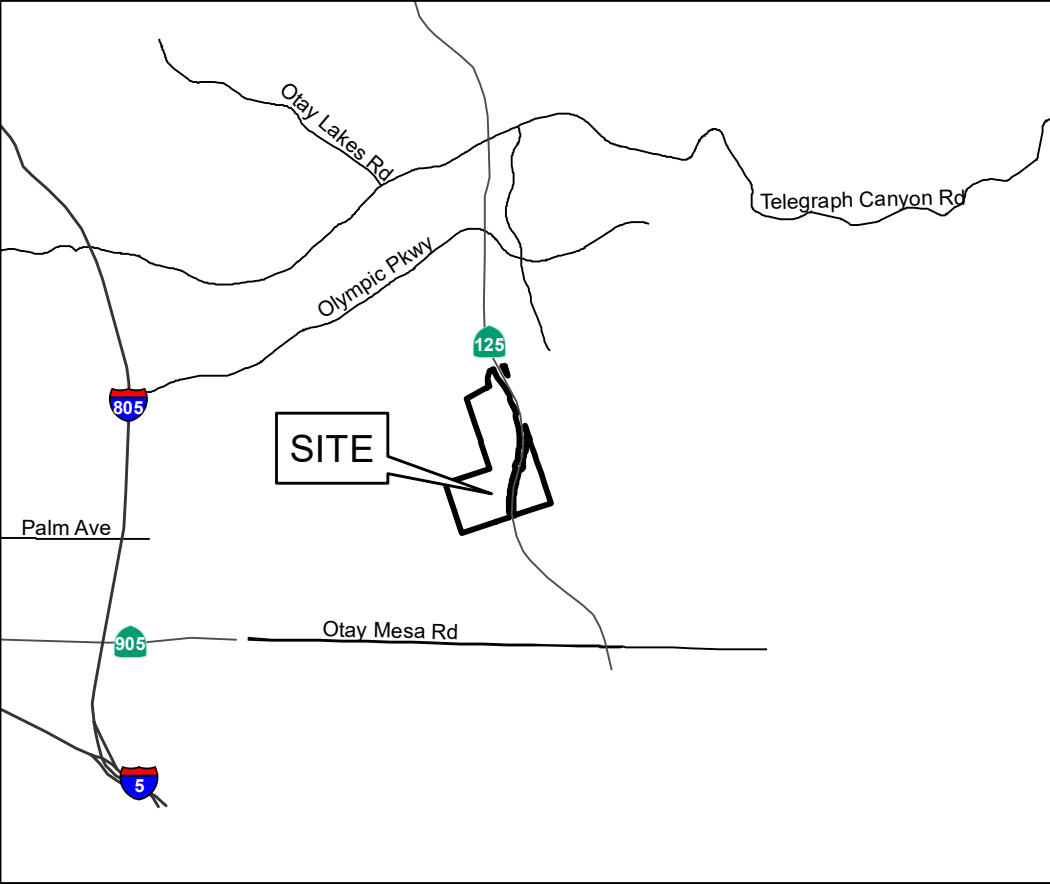


ANNEXATION MAP NO. 13 COMMUNITY FACILITIES DISTRICT NO. 97-2 (PRESERVE MAINTENANCE DISTRICT)

CITY OF CHULA VISTA
COUNTY OF SAN DIEGO, STATE OF CALIFORNIA

VICINITY MAP



- Legend**
- ANNEXATION BOUNDARY
 - MAP REFERENCE NUMBER
 - PARCELS

FILED IN THE OFFICE OF THE CITY CLERK OF THE CITY OF CHULA VISTA THIS _____ DAY _____, 20__.

CITY CLERK
CITY OF CHULA VISTA
STATE OF CALIFORNIA

I HEREBY CERTIFY THAT THE WITHIN MAP SHOWING PROPOSED BOUNDARIES OF ANNEXATION MAP NO. 13 TO COMMUNITY FACILITIES DISTRICT NO. 97-2 (PRESERVE MAINTENANCE DISTRICT) OF THE CITY OF CHULA VISTA, COUNTY OF SAN DIEGO, STATE OF CALIFORNIA, WAS APPROVED BY THE CITY COUNCIL OF THE CITY OF CHULA VISTA AT A REGULAR MEETING THEREOF, HELD ON THE _____ DAY OF _____, 20__, BY ITS RESOLUTION NO. _____.

CITY CLERK
CITY OF CHULA VISTA
STATE OF CALIFORNIA

FILED THIS _____ DAY OF _____, 20__ AT THE HOUR OF _____ O'CLOCK __M. IN BOOK _____, PAGE _____ OF MAPS OF ASSESSMENT AND COMMUNITY FACILITIES DISTRICTS IN THE OFFICE OF THE COUNTY RECORDER IN THE COUNTY OF SAN DIEGO, CALIFORNIA.

COUNTY RECORDER
COUNTY OF SAN DIEGO
STATE OF CALIFORNIA

THE LINES AND DIMENSIONS OF EACH LOT OR PARCEL ENCOMPASSED BY THIS MAP SHALL BE THOSE LINES AND DIMENSIONS AS SHOWN ON THE SAN DIEGO COUNTY ASSESSOR'S MAPS.

THE SAN DIEGO COUNTY ASSESSOR'S MAPS SHALL GOVERN FOR ALL DETAILS CONCERNING THE LINES AND DIMENSIONS OF SUCH LOTS OR PARCELS.

MAP REFERENCE NUMBER	ASSESSOR'S PARCEL NUMBER
1	6460100800
2	6440702000
3	6440702100

HARRIS & ASSOCIATES
101 PROGRESS, SUITE 250
IRVINE, CALIFORNIA 92618
800-827-4901