The background of the slide features a large, light blue, semi-transparent watermark of the San Diego County Fire Department logo. The logo is an oval shape with a double border. Inside the oval, the words "FIRE" and "DEPT." are written in large, bold, sans-serif capital letters, separated by a vertical line. Above the line, the text "SINCE 1921" is written in a smaller font. Below the line, there is a detailed illustration of a fire engine. At the bottom of the oval, the words "CITY OF CHULA VISTA" are written in a bold, sans-serif font.

San Diego County Multi-Agency Wildland Preparedness Exercise

Deputy Fire Chief
Chris Manroe

Emergency Manager
Marlon King

CALIFORNIA

Condition
Californi



mes and

been forced from their

MILLET

County Wildland Drill

- 2003 San Diego County Fire Chiefs began organizing drill
 - Drill moves each year throughout the county
- Grown to over 700 firefighters over 3-days
 - San Diego and Imperial Counties
 - Bomberos from throughout Northern Baja
- Various Law Enforcement Agencies
- California Office of Emergency Services
- San Diego Gas & Electric
- County Emergency Managers

County Wildland Drill

The County Wildland Drill provides many training opportunities...

- Training for firefighters and law enforcement
- Opportunities to work collaboratively
- Allow for agency interoperability
- Operating in areas of potential fire hazard
 - Familiarize with neighborhoods and terrain
 - Provides more opportunities for a younger workforce

County Wildland Drill

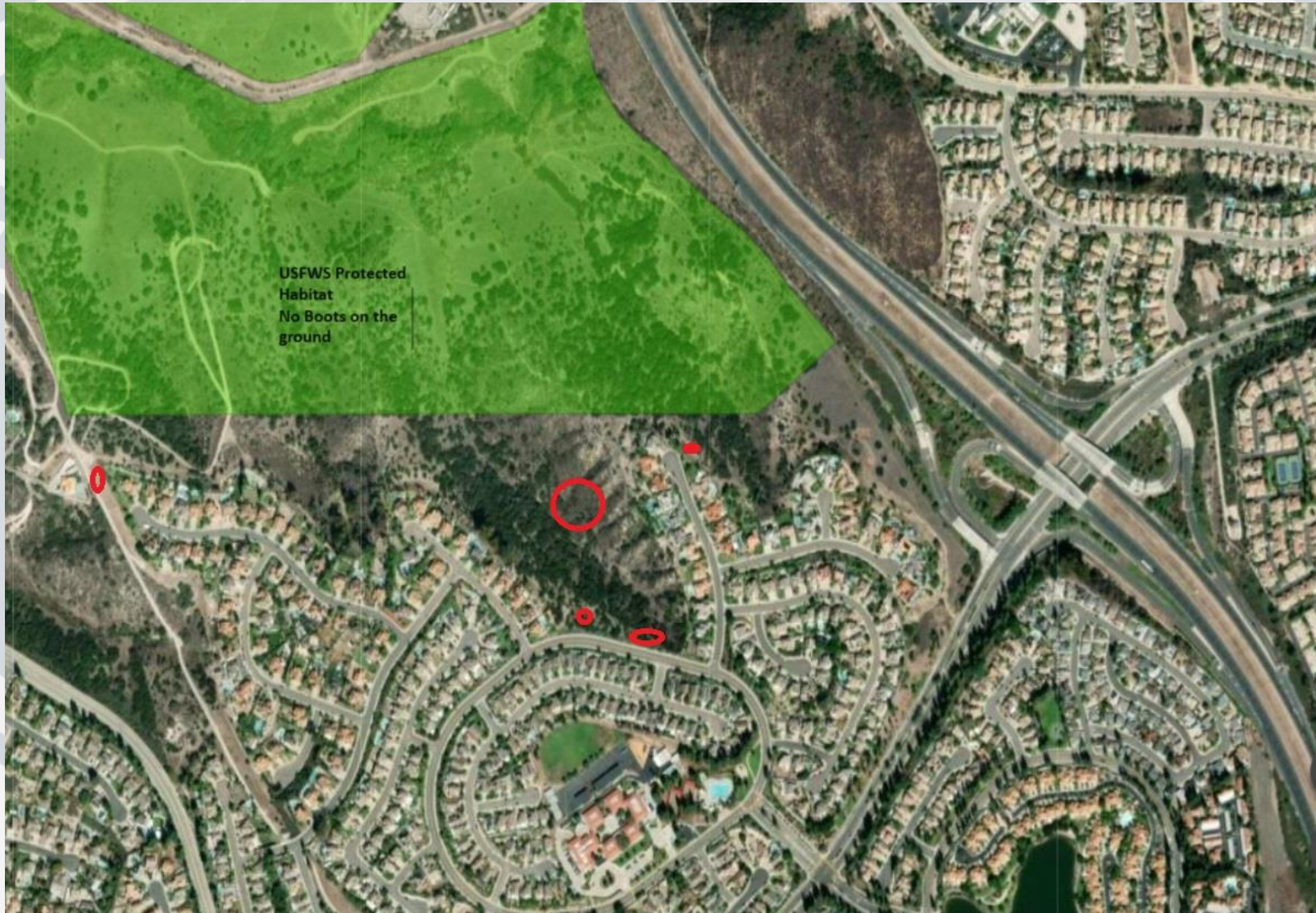
Chula Vista was selected this year to host the 21st annual drill

- This is the first time the drill has been conducted south of I-8
- April 30, May 1-2
- Eastern area of the City

County Wildland Drill



County Wildland Drill



County Wildland Drill

Benefits of Chula Vista hosting the drill

- Coordinating with Law Enforcement
- First responders from outside, seeing our area before the emergency occurs
- Utilizing Genasys Protect for Evacuations

County Wildland Drill

Chula Vista Fire Department has been proactive in mitigating wildfire risks over the recent 10 years...

- Increased staffing
- Fuels Crew
- Mutual Threat Zones
- Squads
- New Brush Engine
- OES Type 1 and 3 engines

CITY OF
CHULA VISTA

County Wildland Drill

Drill will be conducted on April 30, May 1,
and May 2

Thanks to...

Eastlake I HOA

San Miguel Ranch HOA

Montevalle Community Center

Otay Water District