



# **City of Chula Vista Safety Element**

## **City Council**

**Item 8.1**

**April 23, 2024**

# What is a Safety Element?

- Mandatory chapter of the General Plan
- Required by California Government Code Section 65302
- Identify and plan for response to avoid and minimize effects of natural and human-made hazards



# Natural and Manmade Hazards

## NATURAL HAZARDS

**Geologic and Seismic Activity**  
**Wildfires**  
**Flooding**  
**Sea Level Rise**  
**Drought**  
**Tsunami**  
**Climate Change Impacts**

## HUMAN-MADE HAZARDS

**Dam Inundation**  
**Crime**  
**Hazardous Materials**  
**Vulnerability of Critical Facilities**

# Why is the City Updating It?

Required by law to be updated every time the Housing Element is updated

New laws have come into effect since the last adoption of the element

- Addition of climate resiliency policies
- Evacuation routes identification and assessment
- Linkage to Hazard Mitigation Plan
- Linkage to other City Plans- CAP, EOP

Updated data/information is available



# Public Outreach

## One Online Survey

- English and Spanish
- 90+ Responses

## Two Community Workshops

- Identical – Eastern and Western Chula Vista
- Presentation and interactive exercises

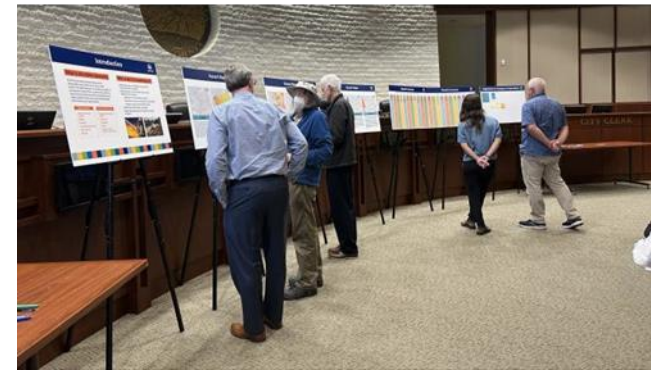
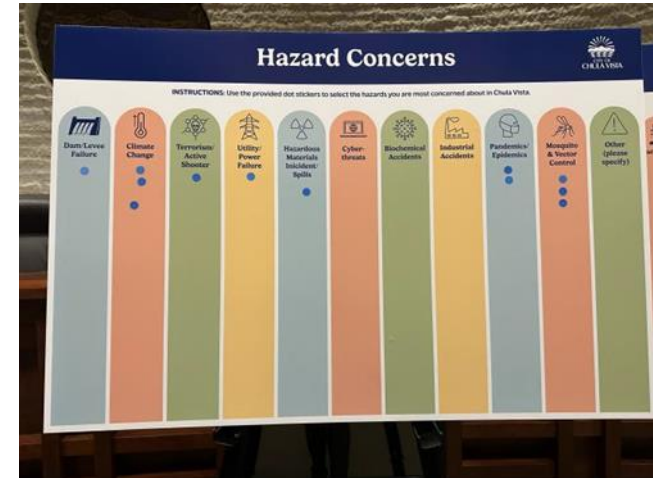
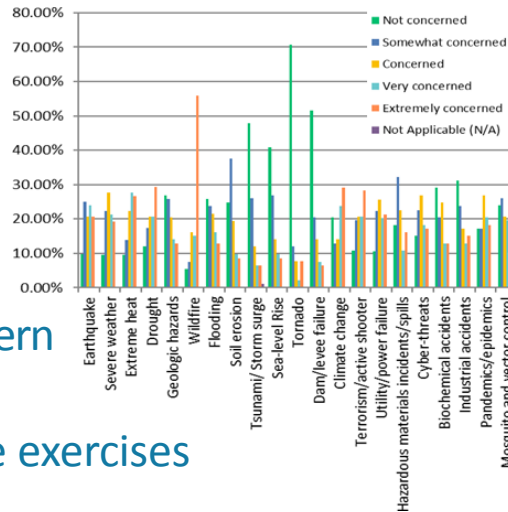
## Public Review Period

- March 4 to March 19, 2024

## Staff/ Agency Review

- City Staff- Planning, Public works, Fire, Police
- City Attorney
- California Department of Forestry and Fire Protection (CAL FIRE)

How concerned are you about the following hazards in Chula Vista?



# Organization

## Current Safety-Related Goals and Policies

- Environmental Element
- Public Services and Facilities Element

## New Safety Element

- Repeal sections from existing GP
- Ease of update with the Housing Element update every cycle

| PUBLIC FACILITIES AND SERVICES ELEMENT<br>CHAPTER 8   |    |
|---|----|
| TABLE OF CONTENTS   |    |
| 1.0 INTRODUCTION  | 1  |
| 1.1 Purpose and Scope   | 1  |
| 1.2 Implementing the Vision and Themes  | 1  |
| 1.3 Relation to Other General Plan Elements and Policies  | 2  |
| 1.4 Related Plans and Programs  | 2  |
| 2.0 GOAL  | 4  |
| 3.0 PLANNING FACTORS, OBJECTIVES, AND POLICIES  | 5  |
| 3.1 Water, Sewer and Drainage   | 5  |
| Figure 8-1 Water Service Areas  | 6  |
| Figure 8-2 Backbone Infrastructure for Wastewater Collection  | 8  |
| ENVIRONMENTAL<br>CHAPTER 9  |    |
| TABLE OF CONTENTS   |    |
| 1.0 INTRODUCTION  | 1  |
| 1.1 Purpose and Scope   | 1  |
| 1.2 Implementing the Vision and Themes  | 1  |
| 1.3 Relation to Other General Plan Elements and Policies  | 2  |
| 1.4 Related Plans and Programs  | 2  |
| 1.4.1 Regional Growth Management Strategy   | 2  |
| 1.4.2 Regional Comprehensive Plan   | 3  |
| 1.5 Sustainable Development   | 3  |
| Figure 9-1 Key Components of Sustainable Development  | 4  |
| 1.6 Environmental Justice   | 6  |
| 1.6.1 Relationship to General Plan Land Use Planning and Policies                                     | 6  |
| 1.6.2 Equitable Distribution of Public Facilities and Services  | 7  |
| 1.6.3 Overconcentration of Industrial Uses  | 7  |
| 1.6.4 Racial/Ethnic Disproportion   | 7  |
| 2.0 GOAL  | 9  |
| 3.0 PLANNING FACTORS, OBJECTIVES, AND POLICIES  | 10 |
| 3.1 Conservation  | 10 |
| 3.1.1 Multiple Species Conservation Program (MSCP)  | 10 |
| Figure 9-2 City of Chula Vista MSCP Subarea and Planning Map  | 13 |
| 3.1.2 Protecting Water Quality  | 15 |
| Figure 9-3 San Diego Bay Watershed Map  | 19 |
| 3.1.3 Meeting Water Demand Through Conservation and Efficient Use                                     | 22 |
| 3.1.4 Preserving the Opportunity for Agricultural Uses  | 24 |
| 3.1.5 Wise Use of Mineral Resources   | 26 |
| 3.1.6 Promoting Clean Air   | 28 |
| Table 9-1 San Diego County's Federal and State Designations for Critical Habitats as of December 2004 | 29 |
| Figure 9-4 MSCP Map   | 29 |
| 3.1.7 Creating a Sustainable Energy Future  | 35 |
| 3.1.8 Promoting Solid Waste Reduction Strategies  | 37 |
| 3.1.9 Protecting Chula Vista's Cultural Resources   | 38 |
| 3.1.10 Protecting Paleontological Resources   | 40 |

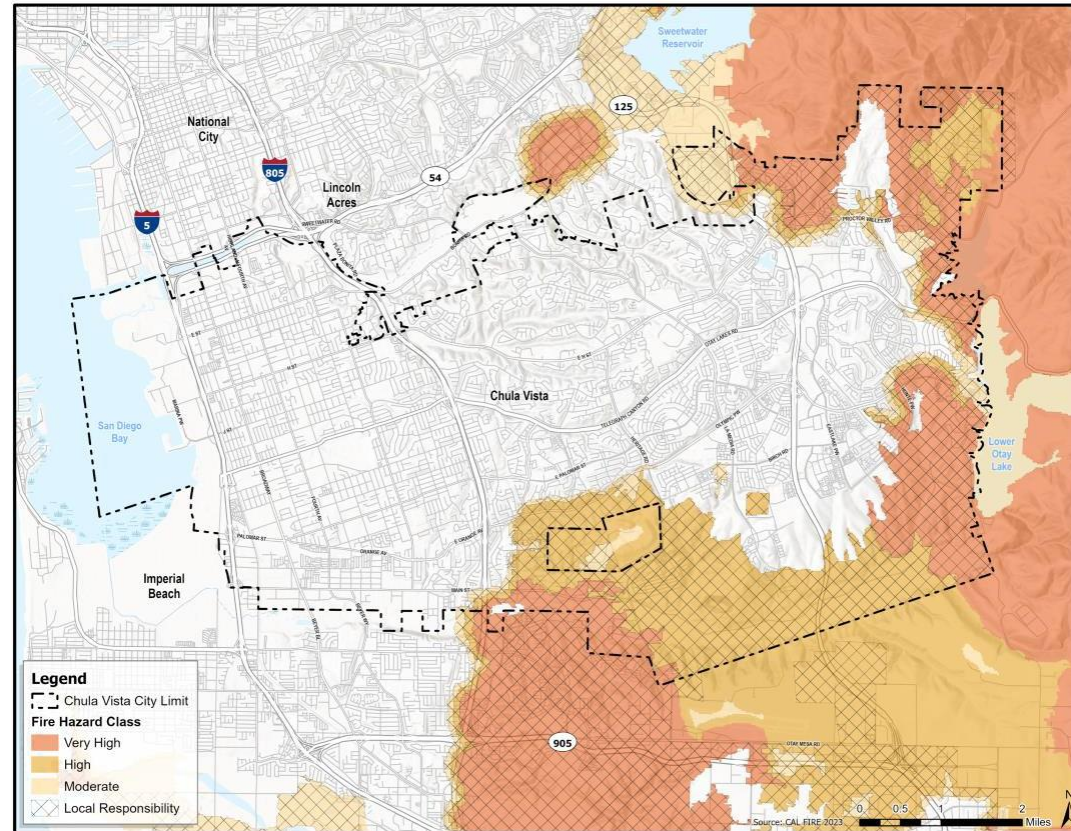


# Cal Fire Consultation

## Fire Hazard Areas

### Pursuant to SB 1241

- Consultation with Cal Fire
- Addition and updates to Wildfire policies and actions
  - Fuel modification/ defensible space
  - Fire-safe design
  - Fire breaks
  - Evacuation
  - Water supply
  - Emergency services
  - Education/outreach



**Reviewed by Board of Forestry and Fire Protection (CAL FIRE)  
Staff- Approval hearing – April 9, 2024**

# Evacuation Routes Study

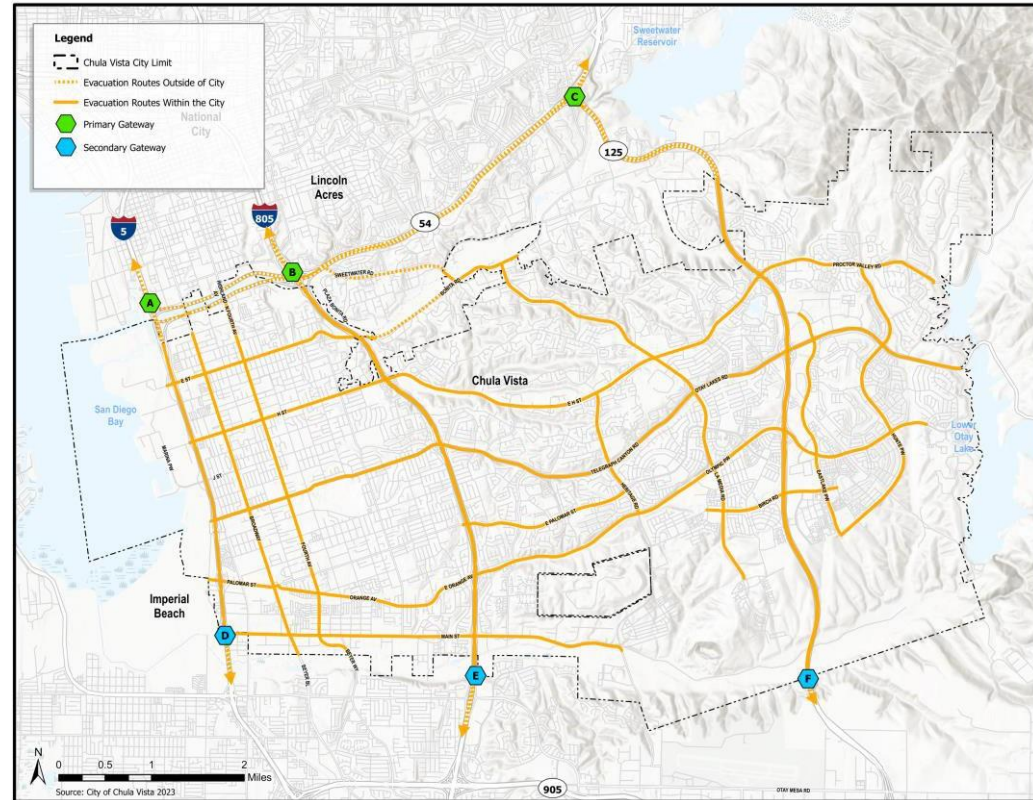
## Pursuant to SB 99

- Identification of evacuation routes and access to two or more evacuation routes for residential areas

## Pursuant to AB 747

- Analysis of evacuation routes to include the safety, viability, and capacity under a range of emergency scenarios
- Two scenarios analyzed

## Evacuation Routes

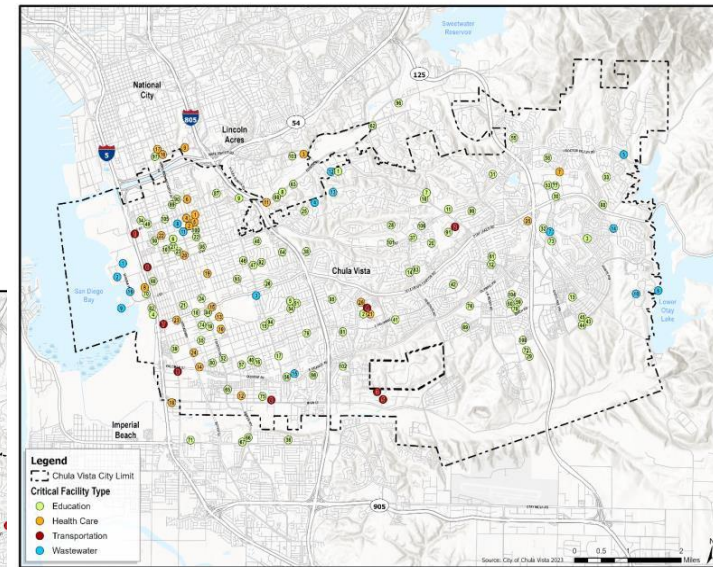
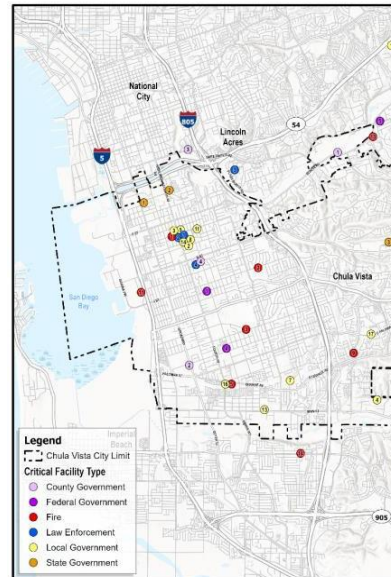


# Integration of Hazard Mitigation Plan

## Pursuant to AB 2140

- San Diego County Multi-Jurisdictional Hazard Mitigation Plan
- City- Jurisdictional Partner
- Allows for the implementation of hazard mitigation strategies
- Cover local shares of the 25% non-federal portion of grant- funded post-disaster projects
- Vulnerability Assessment of Critical Facilities

## Critical Facilities



# Climate Resilience

## Climate Change

### Pursuant to SB 379

- Vulnerability Assessment from MJHMP of critical facilities
- Topics- Climate change, Extreme Heat, Sea Level Rise, Resilience, Drought
- Address climate adaption and resiliency strategies
- CAP integrated by reference
- Addition of climate resilience policies and actions

| Climate Change Factors impacting the City | Observed (1961-1990) | Mid-Century (2035-2064) |                |
|---|----------------------|-------------------------|----------------|
|   |                      | Medium Emissions        | High Emissions |
| Annual Average Maximum Temperature (°F)   | 71.0 - 71.7          | 72.6 – 76.0             | 73.1 – 76.5    |
| Extreme Heat Days (days)                  | 2 – 4                | 5 – 16                  | 6 – 20         |
| Annual Precipitation (inches)             | 10.8                 | 10.6                    | 10.4           |
| Annual Average Area Burned (acres)        | 247.5 – 290.1        | 279.0 – 335.6           | 303.2 – 344.1  |

**On March 27<sup>th</sup> Planning Commission voted 6-0-1 to recommend that City Council approve the resolution to amend the General Plan to establish a new Safety Element.**



# Emergency Management – Preparedness and Mitigation

- Example of the City's commitment to properly planning for emergency preparedness, mitigation, and public safety
- Remain current with Local, State, and Federal guidelines and best practices
- Supports requirements for:
  - Grant opportunities
  - Reimbursement post disaster
  - Fire Risk Reduction Community List (FRRCL)

## Safer from Wildfires in





# Recommendation

Staff recommends that the City Council adopt the Resolution to establish the Safety Element.