



Eucalyptus Park Renovations

City Council

Item 7.1

June 6, 2023



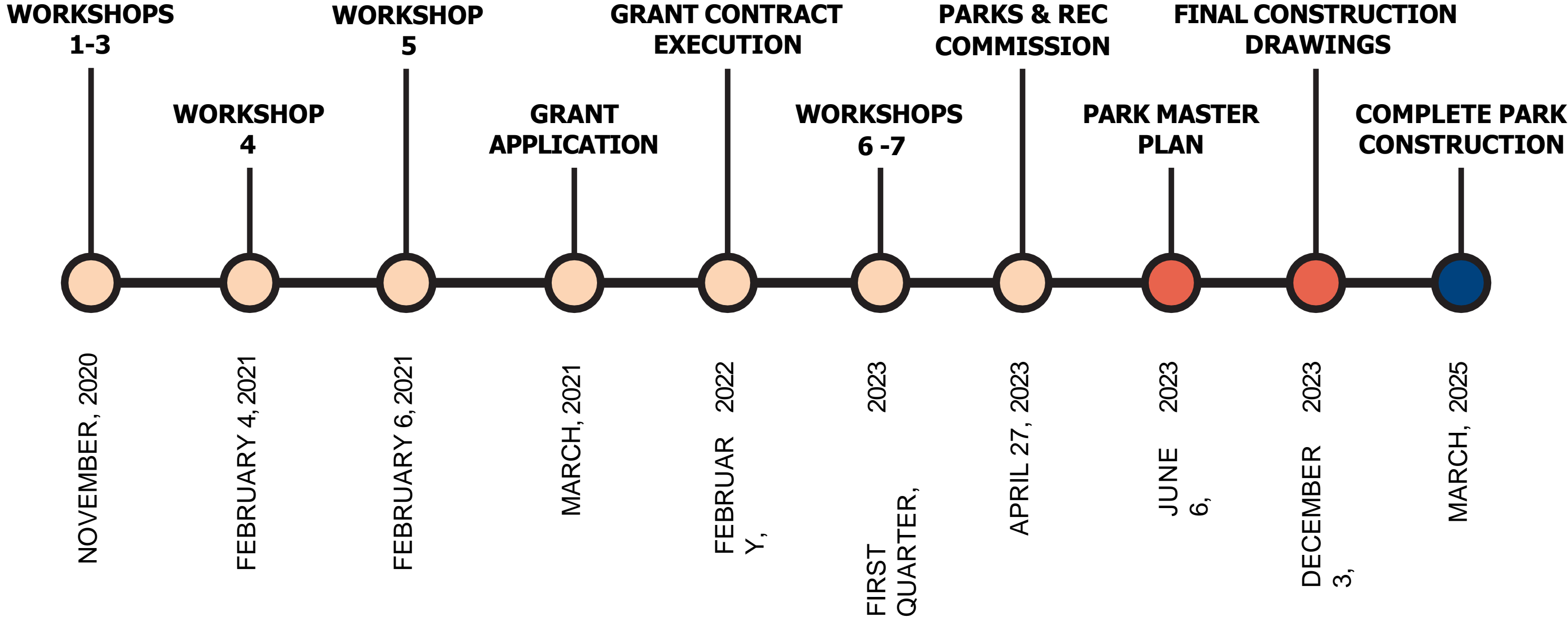
ktua



PROJECT LOCATION



PROJECT TIMELINE





Eucalyptus Park Renovations

Project Survey

To provide input on the Eucalyptus Park Renovations project, fill out this survey and return to the City or take the survey online at <https://www.chulavistaca.gov/departments/public-works/parks/locations-features-amenities-photos/eucalyptus-park>. Survey will close on **January 27th** so be sure to complete and return the survey by then!



1 Please provide your contact information below to receive future project updates:

Name: _____

Email Address: _____

2 How far from Eucalyptus Park do you live? (Choose one)

- 1 mile or less
- 1-3 miles
- More than 3 miles

3 How do you travel to Eucalyptus Park? (Choose all that apply)

- Walking
- Biking
- Other (Please specify) _____
- Public Transit
- Driving

4 How often do you visit Eucalyptus Park? (Choose one)

- Daily or almost daily
- Once per week
- A few times a month
- A few times a year
- Never

5 What are the ages of the individuals in your household who visit the park? (Choose all that apply)

- 0-4
- 5-12
- 13-18
- 19-45
- 46-64
- 65+

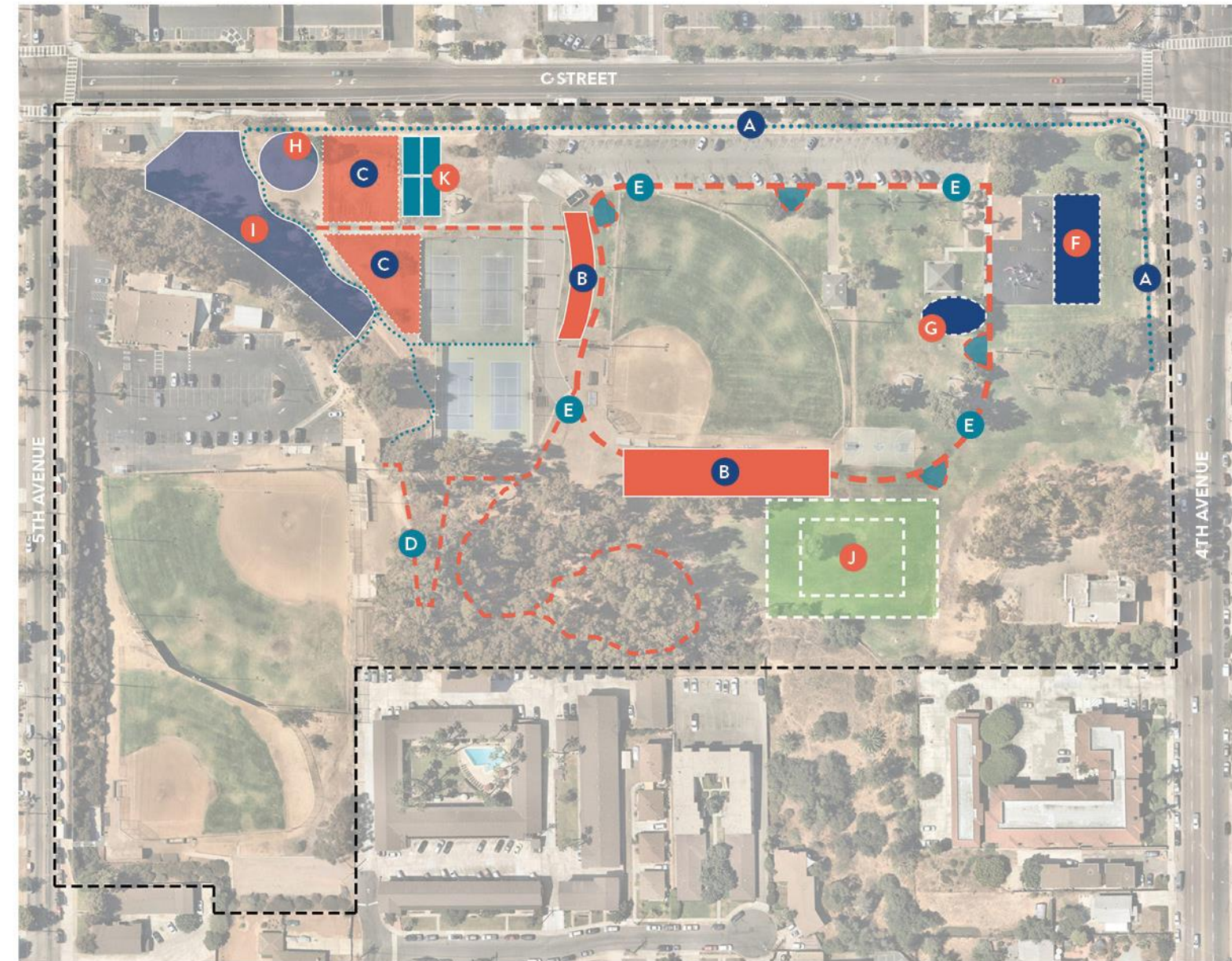
6 What are the top three amenities that you use in Eucalyptus Park? (Choose three of the options below)

- Dog Park
- Horseshoe Courts
- Tennis Courts
- Baseball Fields
- Picnic Tables & Shelters
- Playground
- Sand Volleyball Court
- Basketball Court
- Lawn Areas
- Eucalyptus Groves
- Other (Please specify) _____

7 What are your top three concerns with the existing elements and design of Eucalyptus Park? (Choose three of the options below)

- Safety & Security In The Park
- Litter & Vandalism In The Park
- Insufficient Turf Area
- Surfacing in the Dog Park
- Insufficient Play Equipment
- Other (Please specify) _____

8 Please describe your thoughts or concerns related to the existing park elements/issues indicated above:



Eucalyptus Park Program Plan

LEGEND

Amenity Enhancement

- A** Stormwater Channel Improvements
- B** Parking Improvements (Final Location TBD)
- C** Dog Park Improvements

Accessibility

- D** Connection To Menzel Field
- E** Perimeter Walking Path & Fitness Equipment

Active Play

- F** Playground Equipment
- G** Splash Pad
- H** Skate/Scooter plaza

- I** Bike Skills Course
- J** Multi-Purpose Lit Artificial Turf Field
- K** Lit Pickleball Courts

19 Please provide any thoughts, comments or feedback you have on the program plan below:

95

Survey Responses

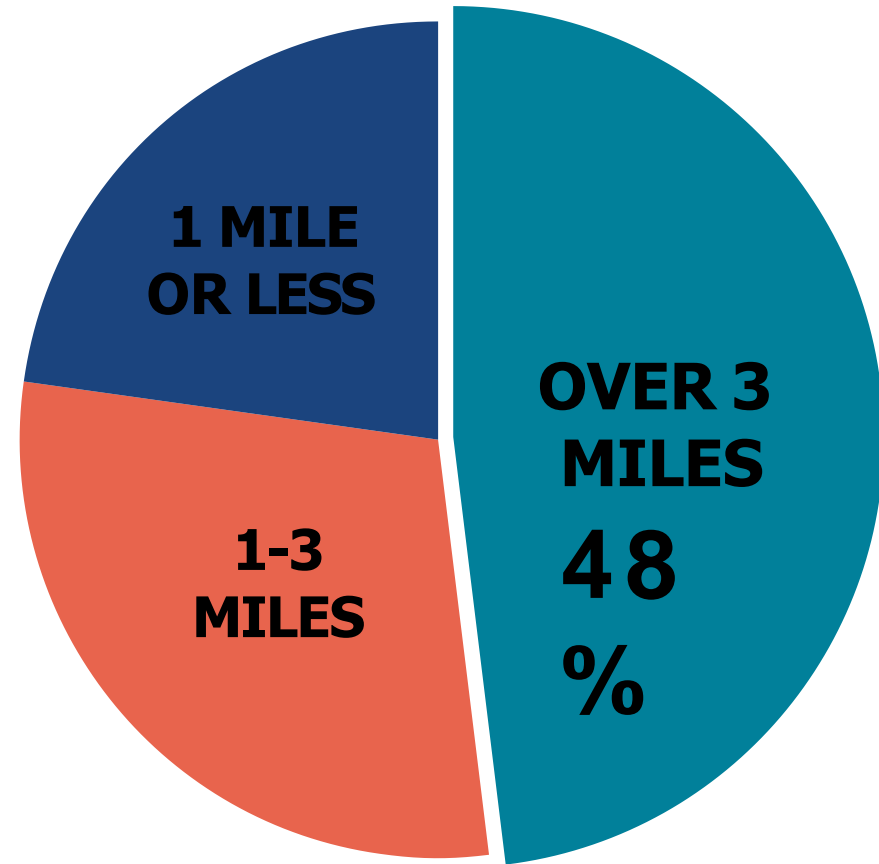
48

Workshop Participants

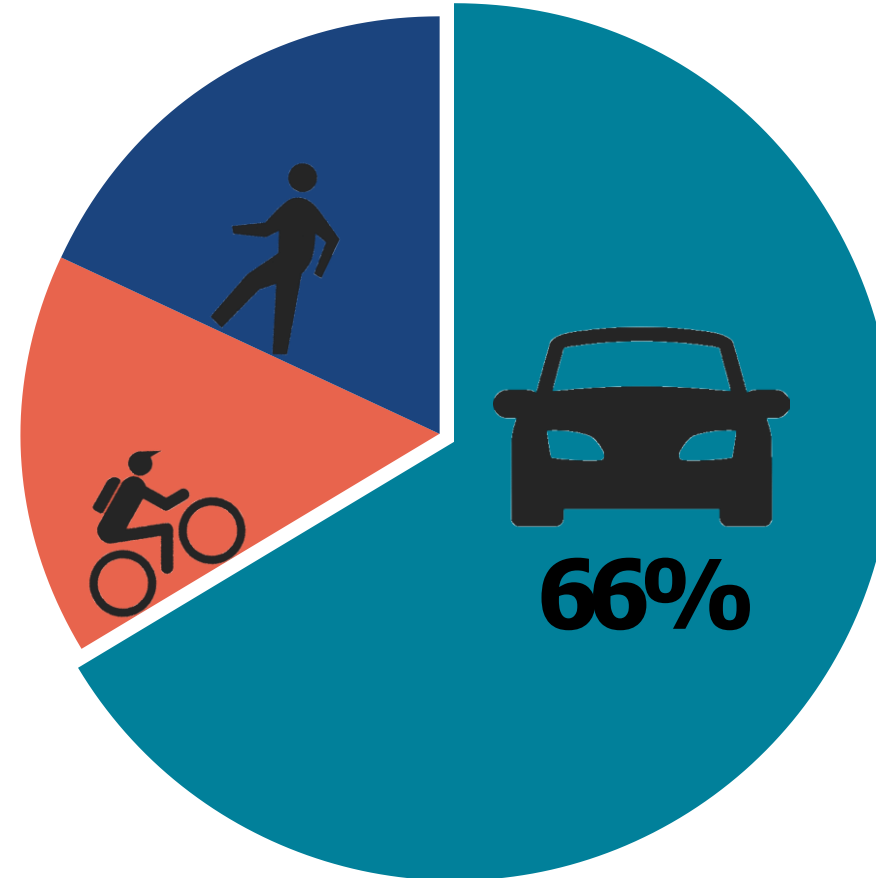


Questions #2-#4:

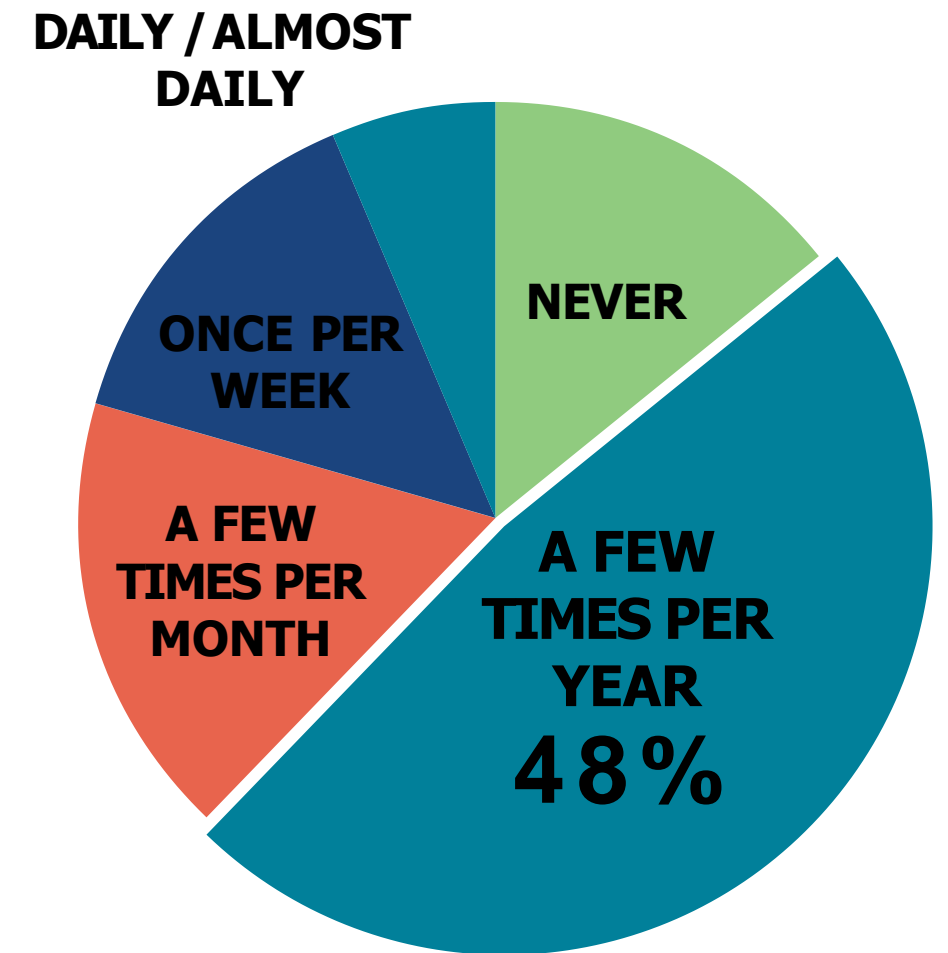
How far away from Eucalyptus Park do you live?



How do you travel to Eucalyptus Park?

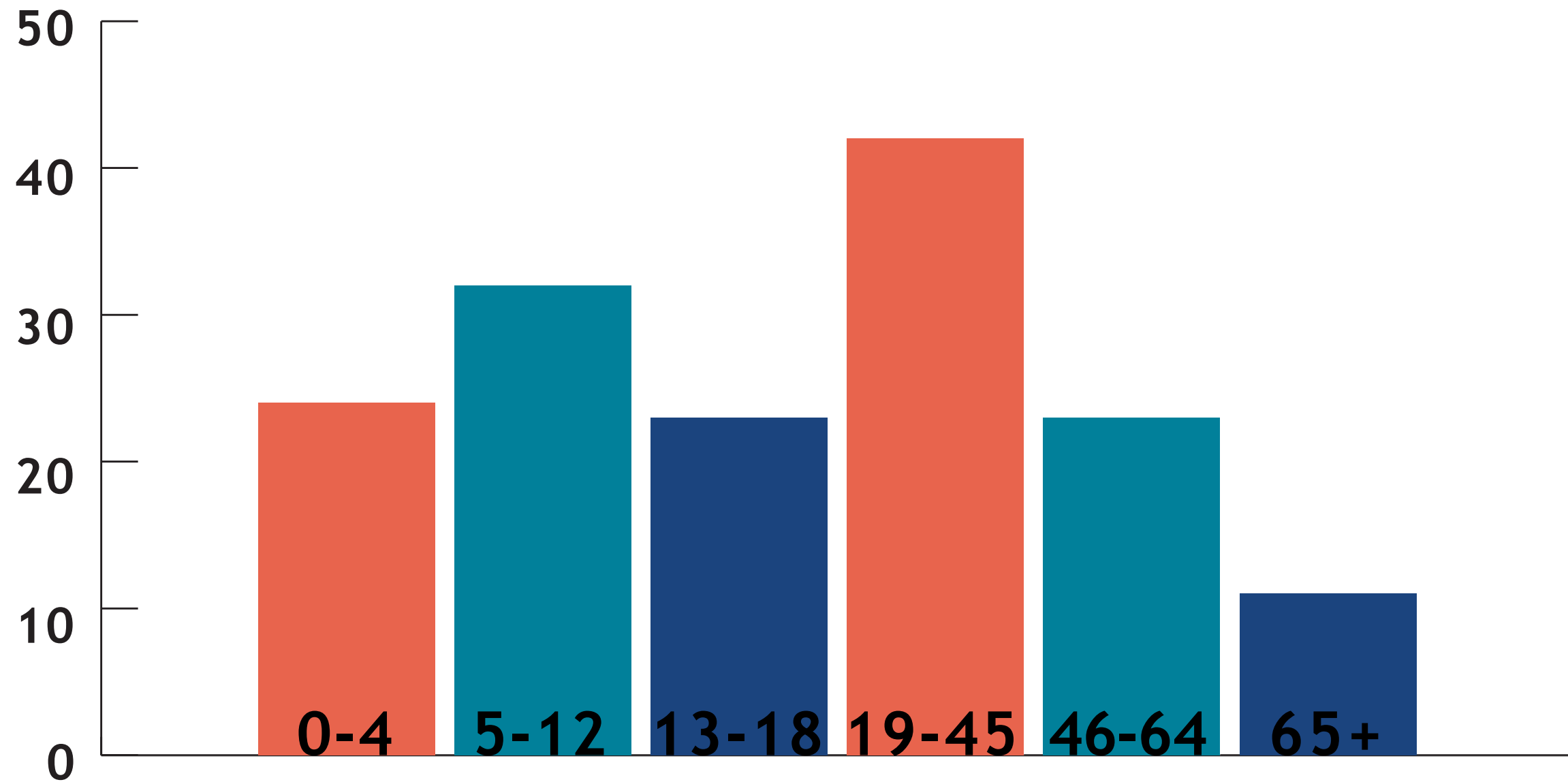


How often do you visit Eucalyptus Park?



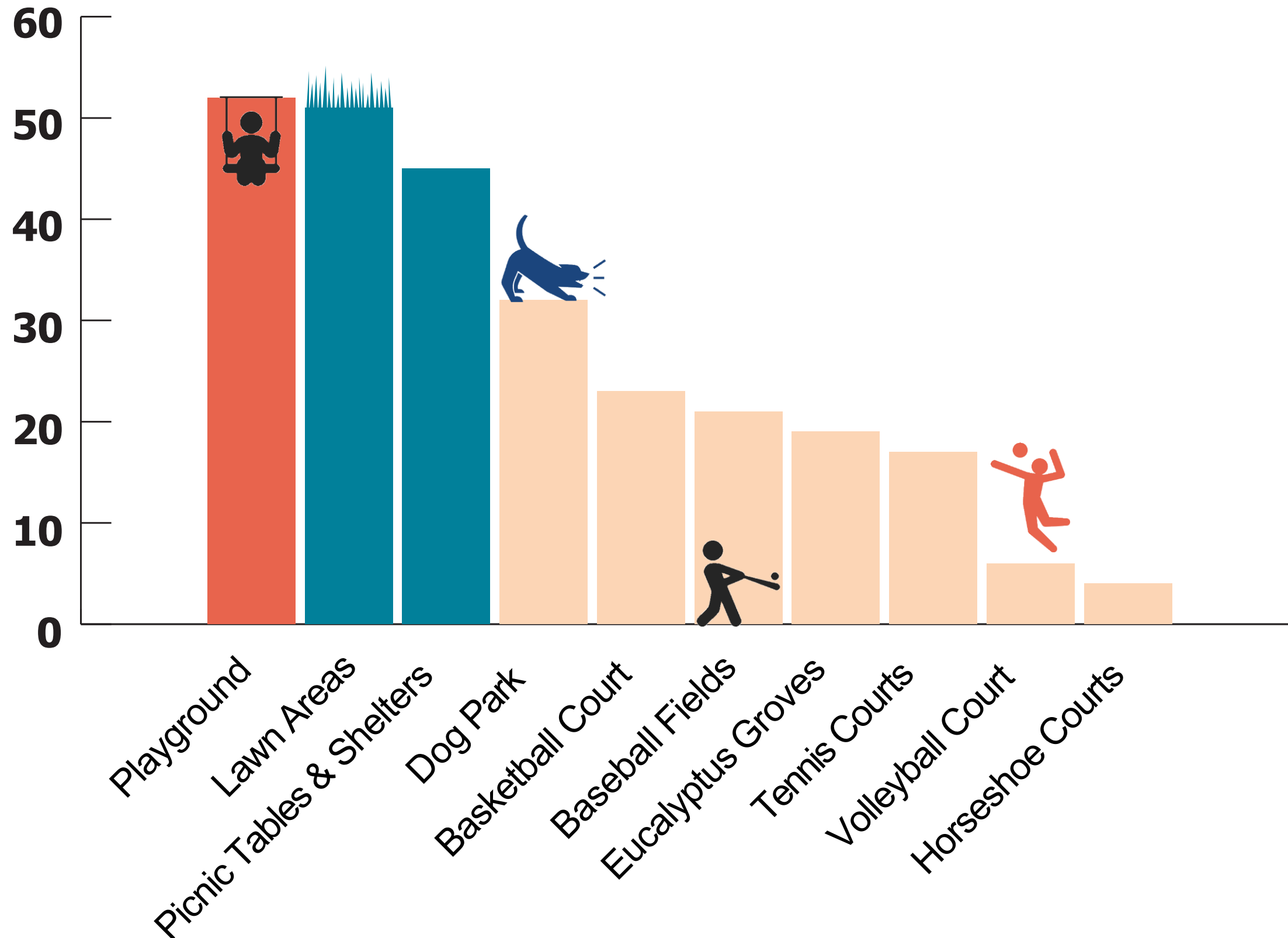
Question #5:

What are the ages of the individuals in your household who visit the park?



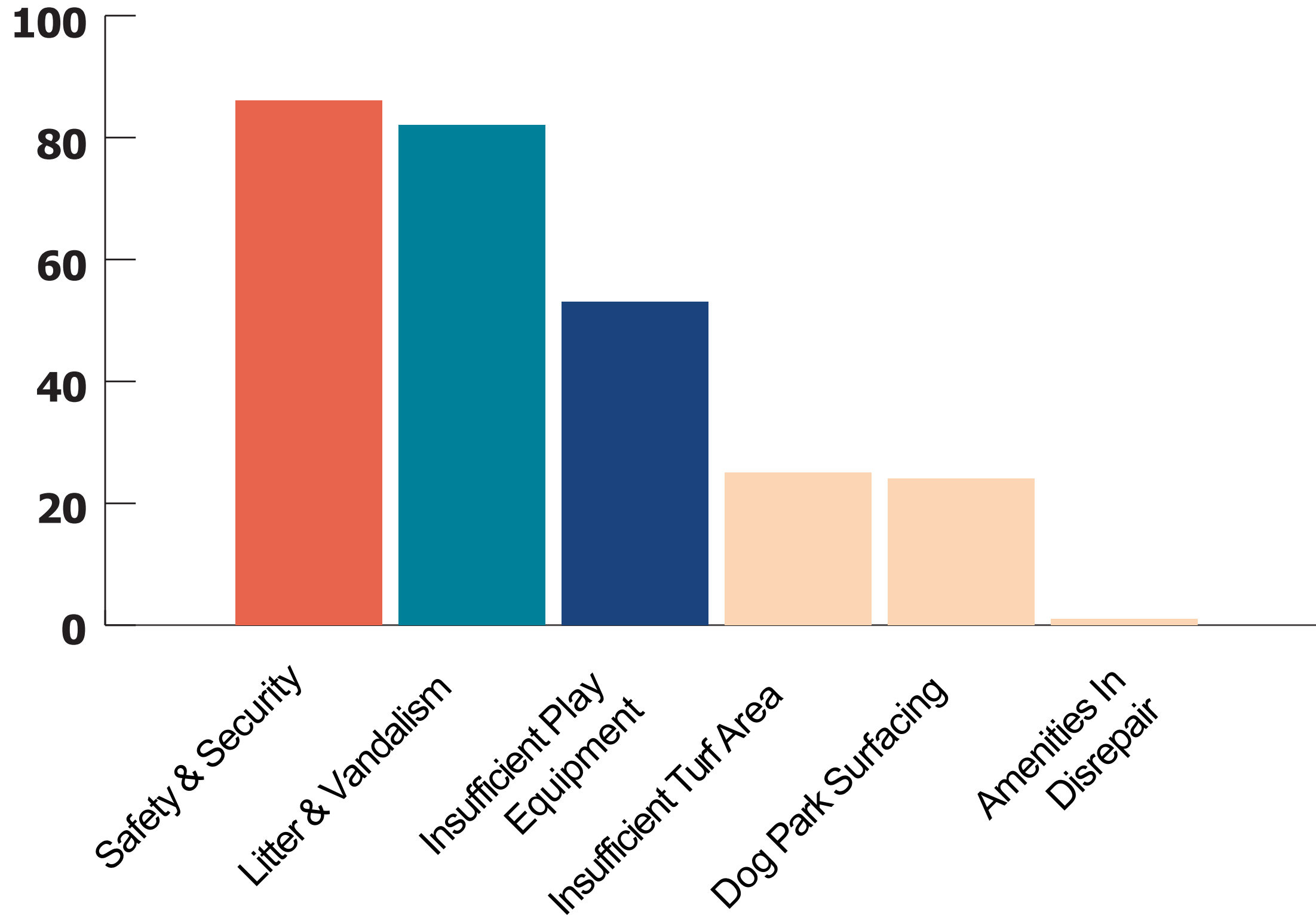
Question #6:

What are the top three amenities that you use in Eucalyptus Park?



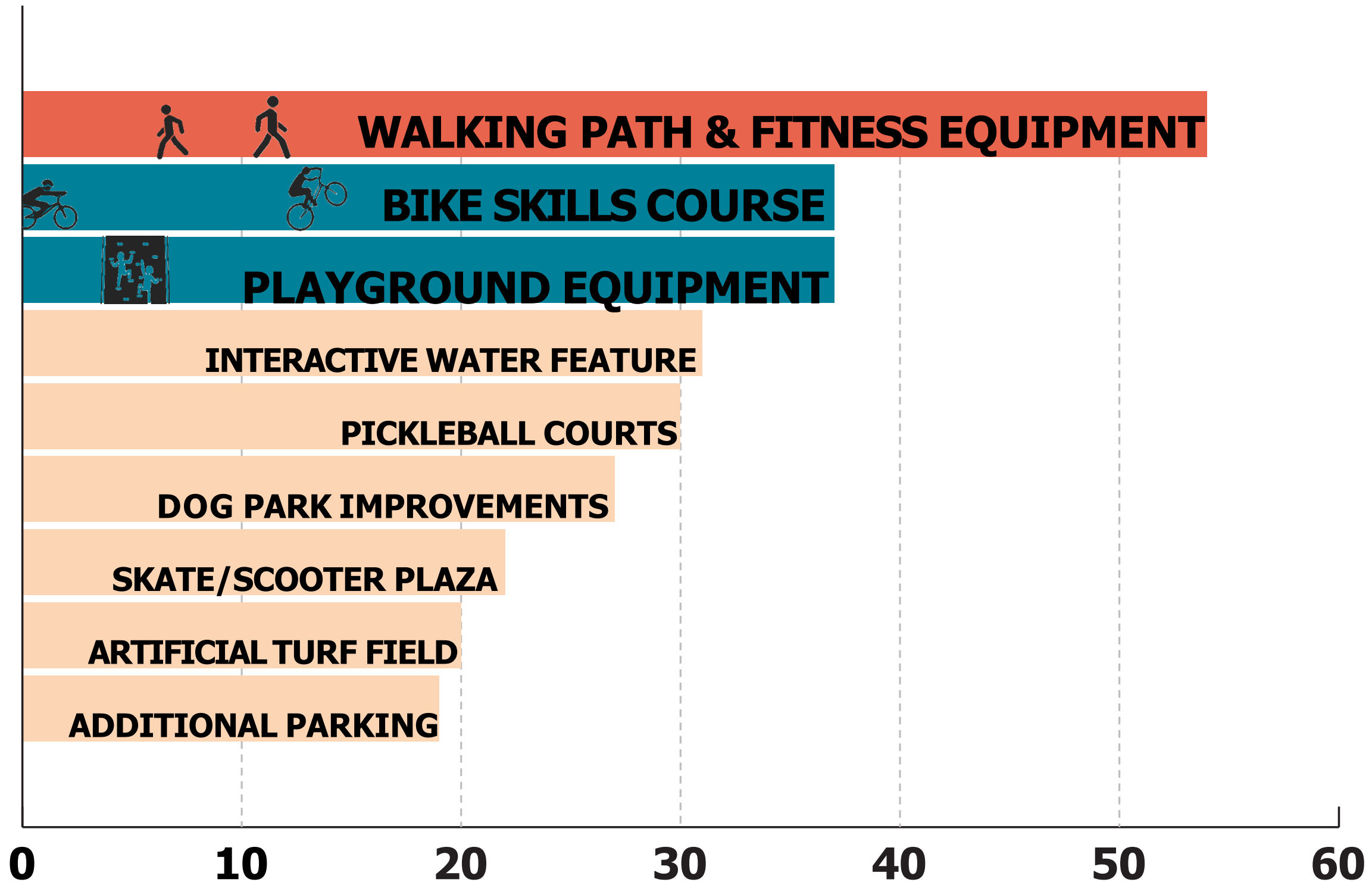
Question #7:

What are your top three concerns with the existing elements and design of Eucalyptus Park?



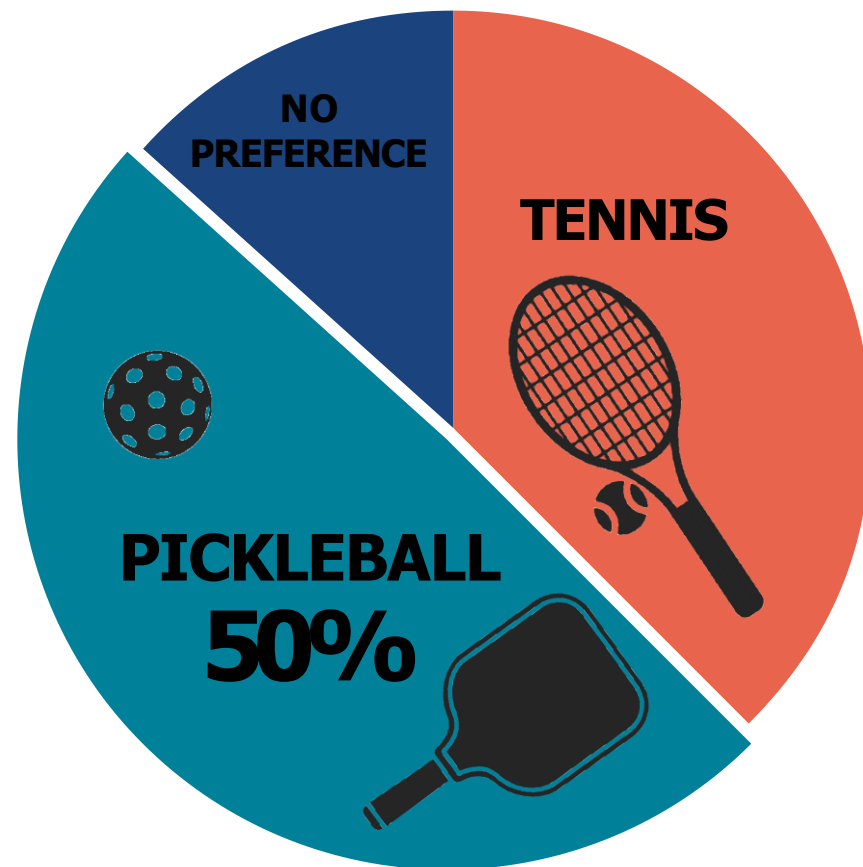
Question #9:

What are the top three amenities you would like to see in Eucalyptus Park?

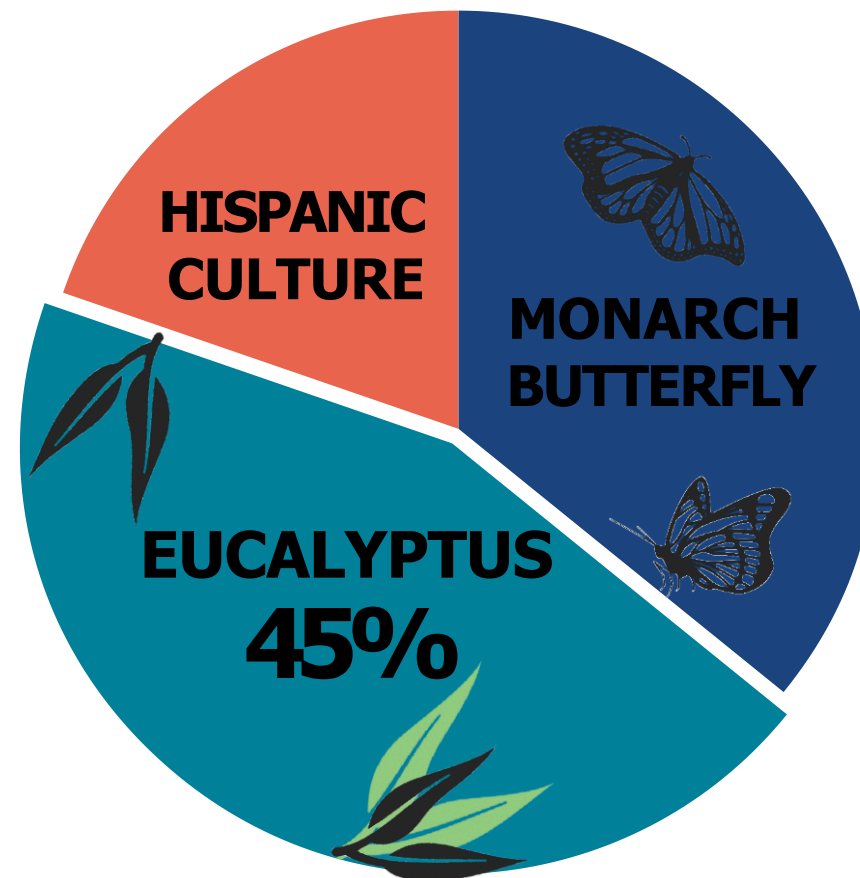


Questions #11-#13:

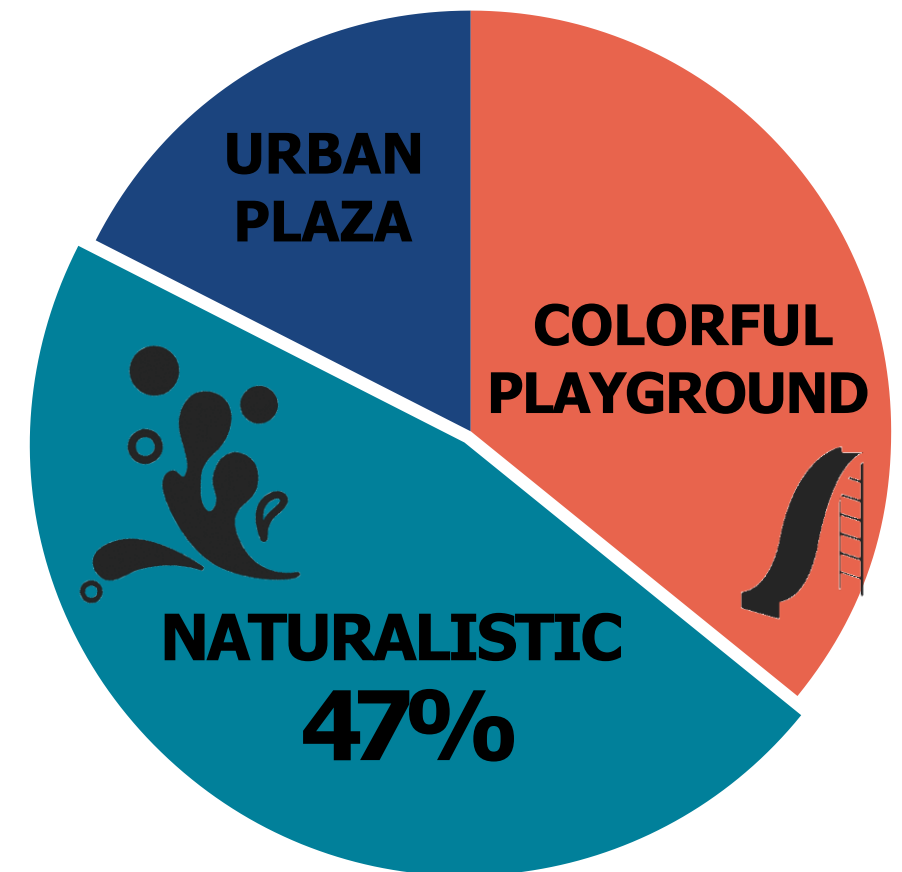
Do you prefer Tennis or Pickleball?



Which design theme would you prefer for the park?

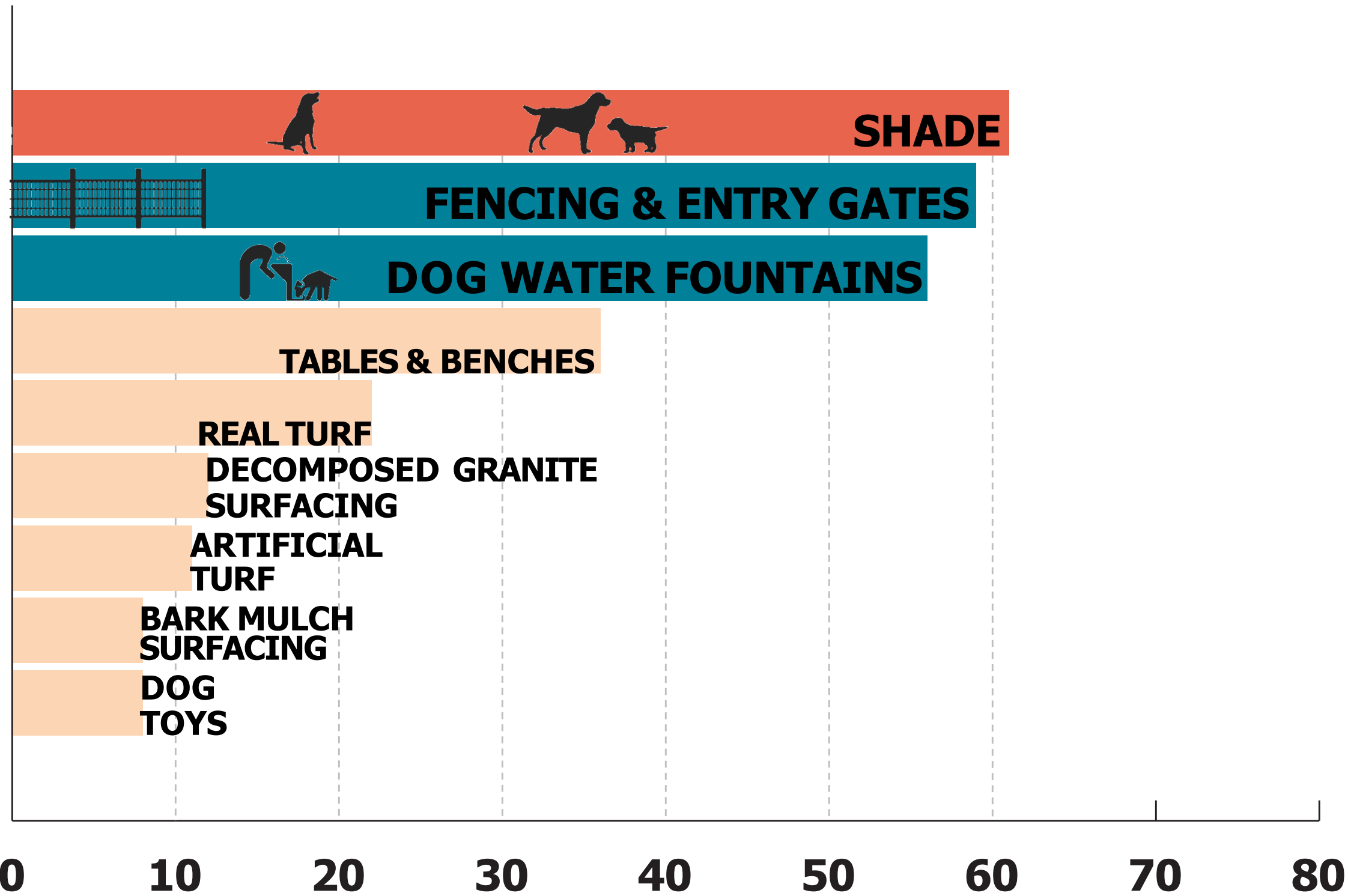


Which design scheme would you prefer for the interactive water feature?



Question #14:

What are the top three amenities you would like to see in the Dog Park?



(1) Shade & Benches



Decomposed Granite Surfacing



(2) Fencing & Entry Gates



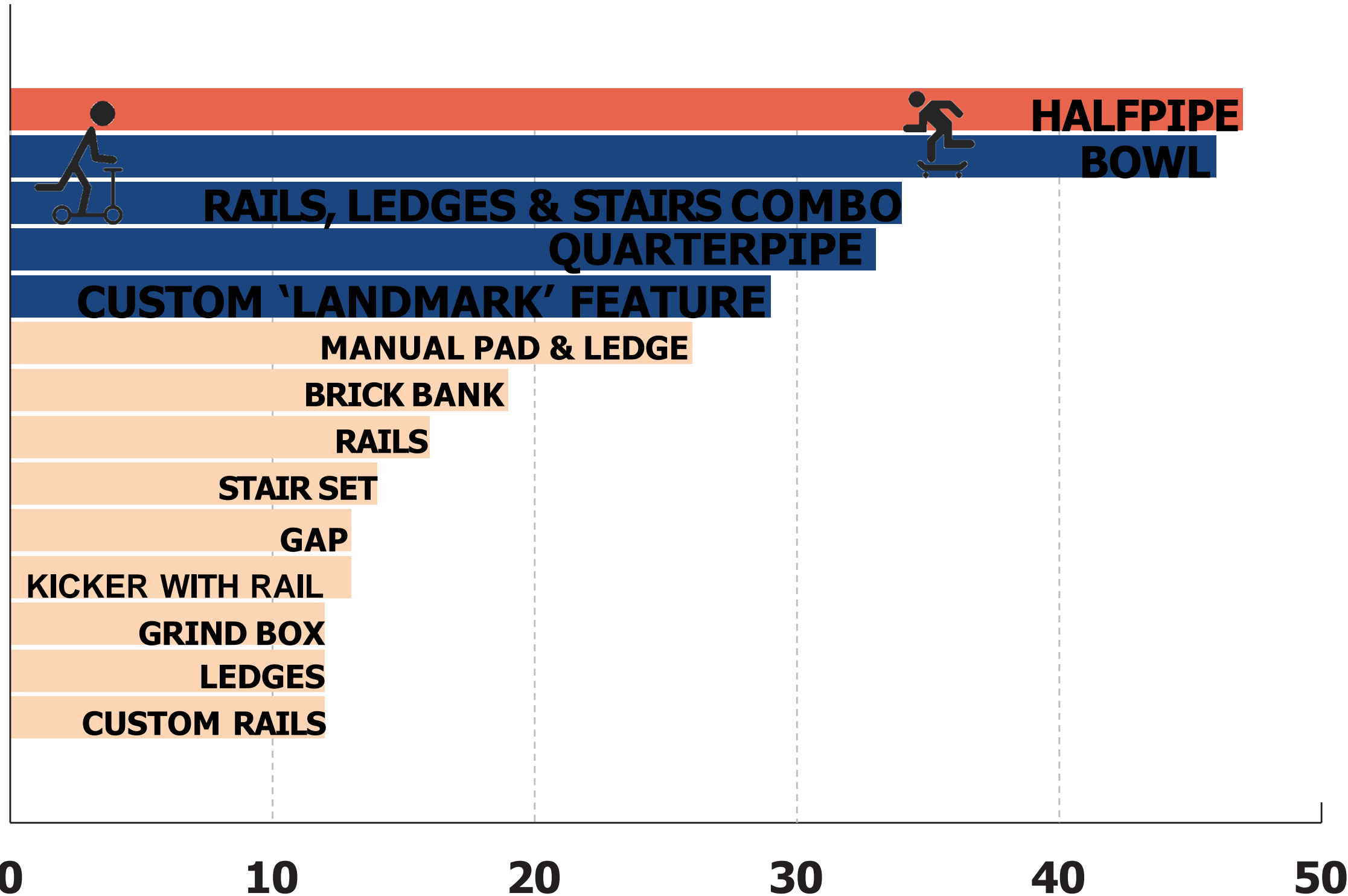
(2) Fencing & Entry Gates



(3) Dog Water Fountains

Question #15:

What are the top five features you would like to see in the skate/scooter plaza?



(1) Halfpipe



(4) Quarterpipe



(2) Bowl



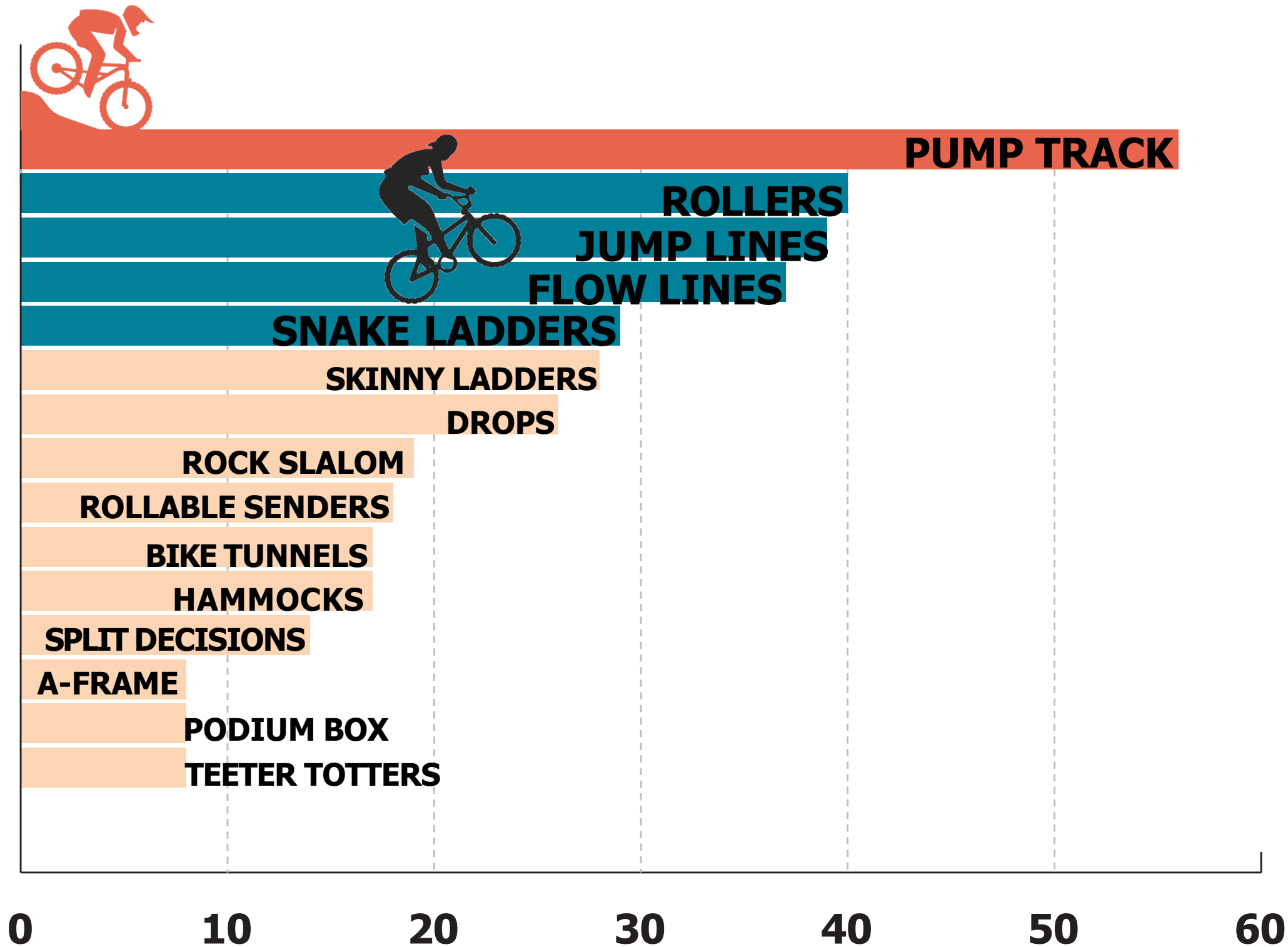
(5) Landmark Feature



(3) Rails, Ledges & Stair Combo

Question #17:

What are the top five features you would like to see in the bike skills course area?



(1) Pump Track



(4) Flow Lines



(2) Rollers



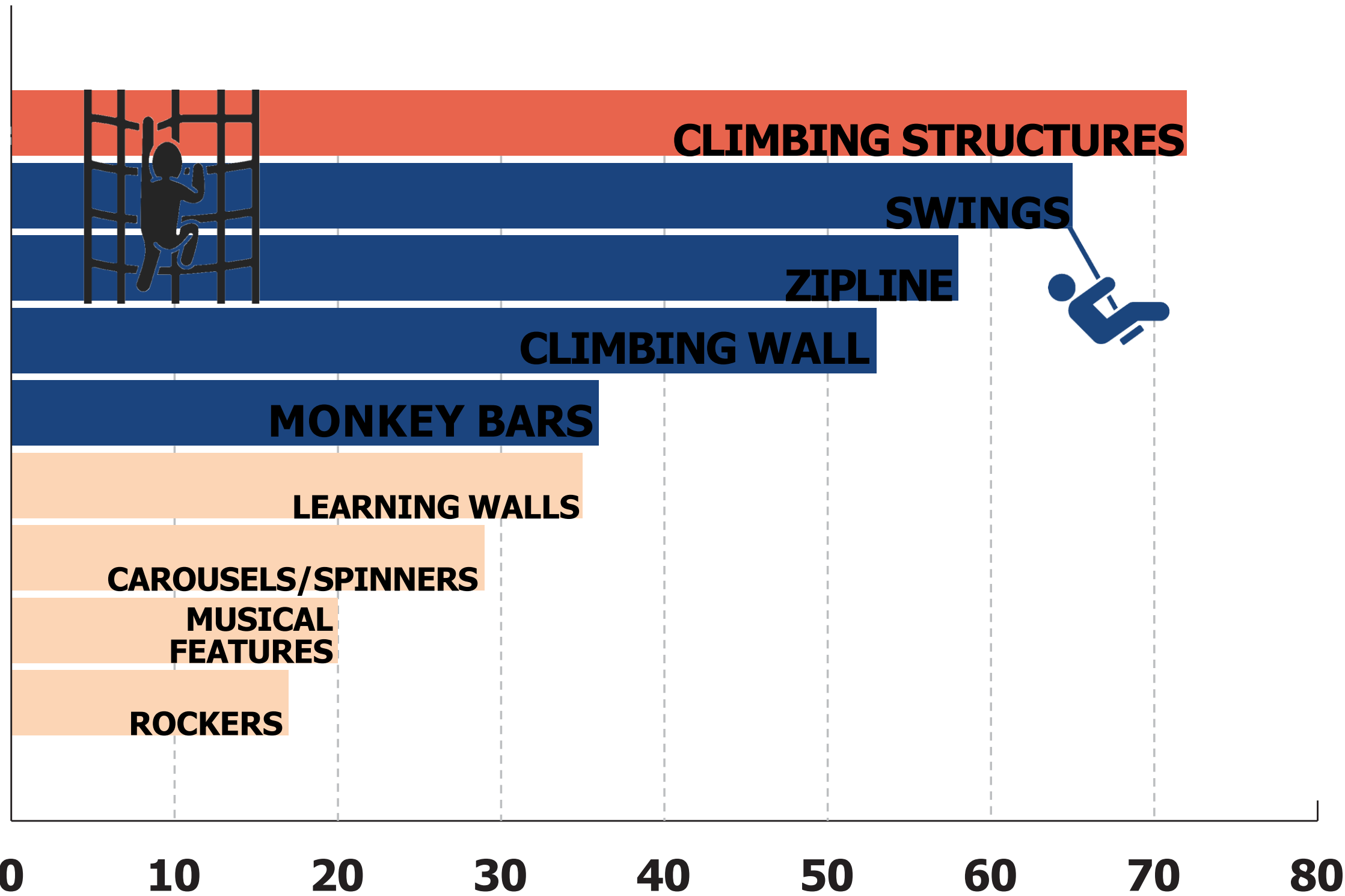
(5) Snake Ladders



(3) Jump Lines

Question #18:

What are the top five features you would like to see in the playground?



(1) Climbing Structure



(4) Climbing Wall



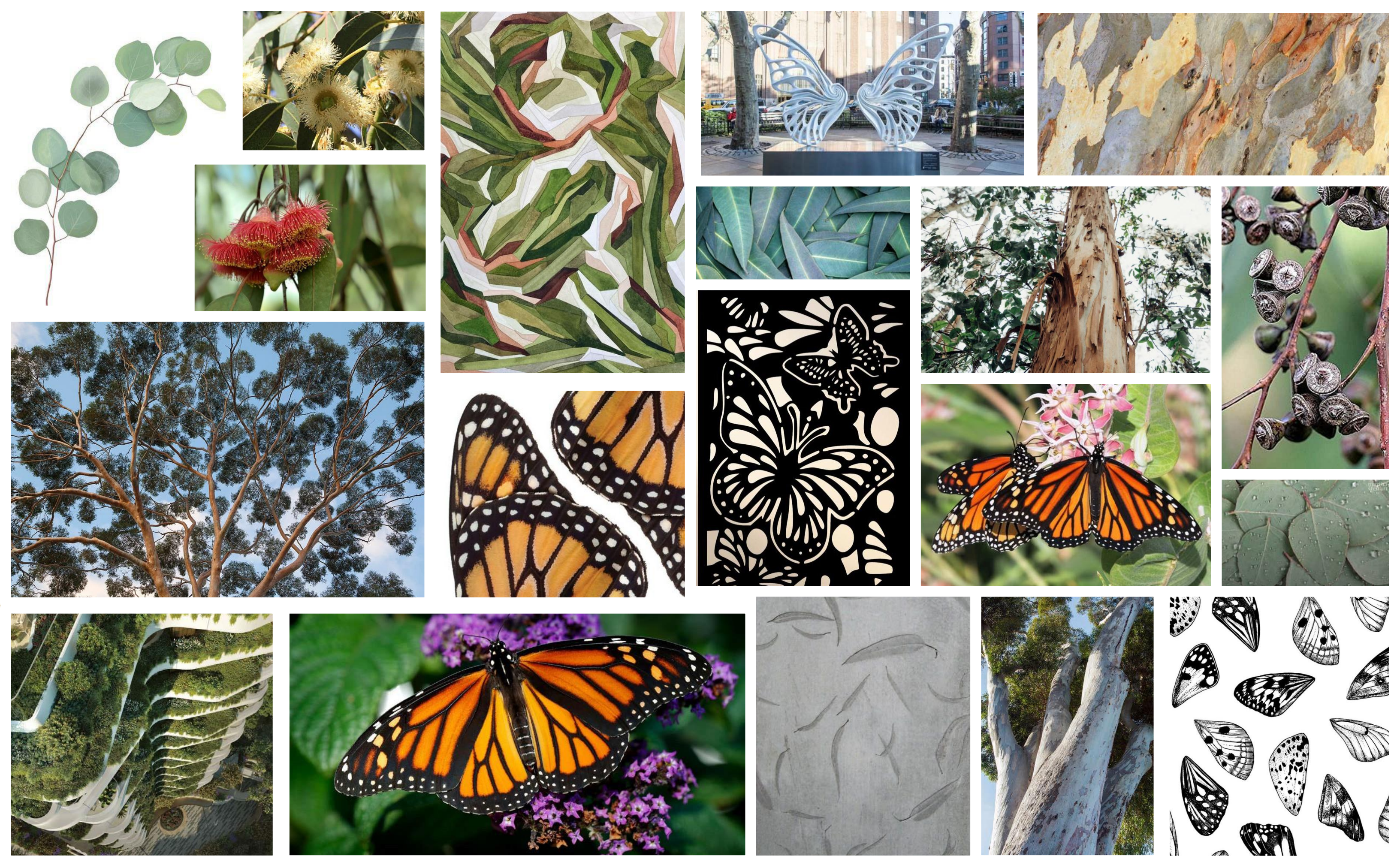
(2) Swings



(5) Monkey Bars

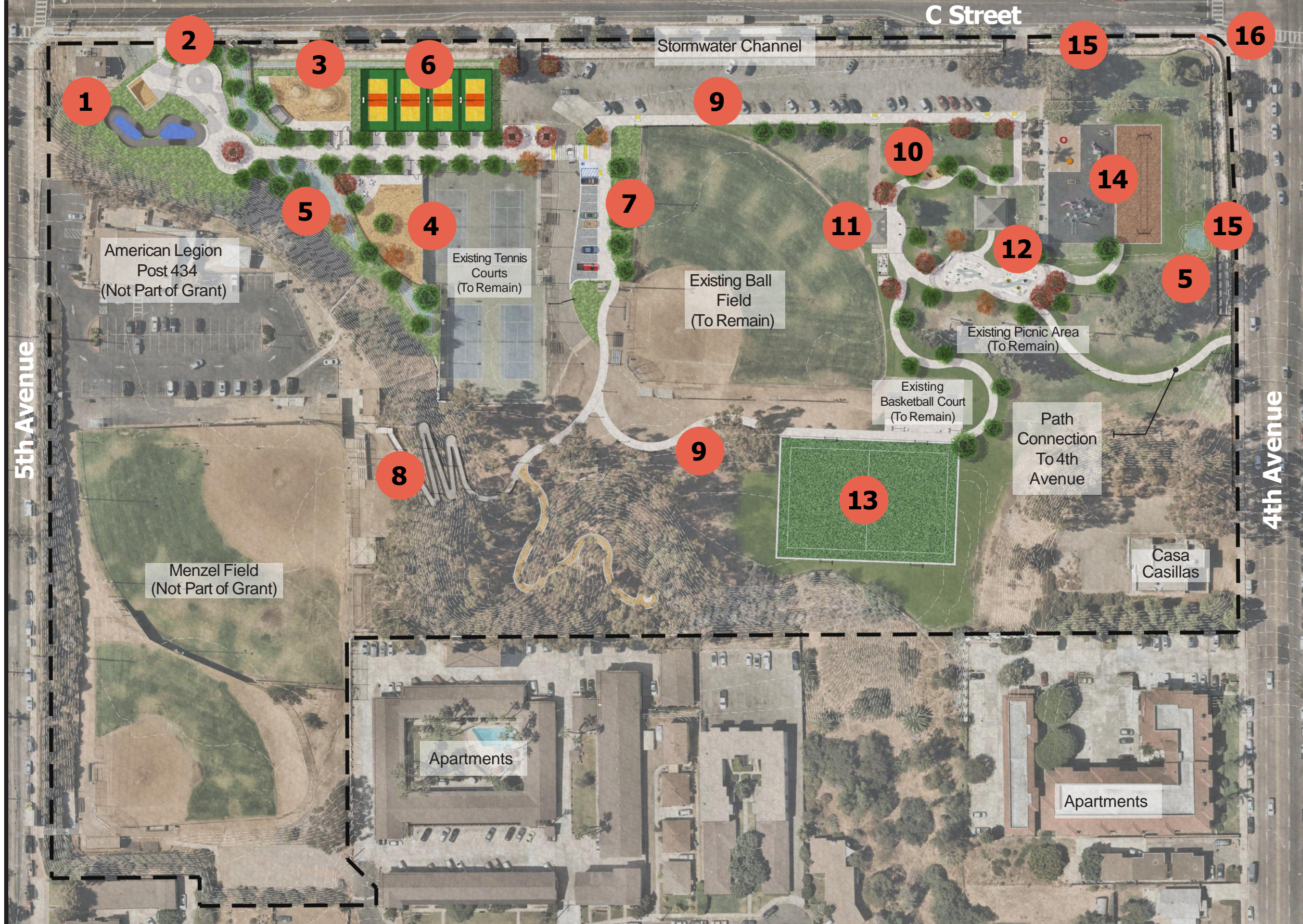


(3) Zipline



LEGEND:

- 1 Bike Park
- 2 Skate Park
- 3 Small Dog Park
- 4 Large Dog Park
- 5 Stormwater Channel & Basins
- 6 Pickleball Courts (4)
- 7 Additional Parking Lot (13 New Spaces)
- 8 ADA Ramp
- 9 Perimeter Trail
- 10 Fitness Equipment
- 11 Showers & Changing Station
- 12 Interactive Water Feature
- 13 Lit Artificial Turf Field (7vs7 165'x105')
- 14 New Playground & Surfacing
- 15 New Channel Fencing
- 16 Park Monument Sign



PARK MASTER PLAN

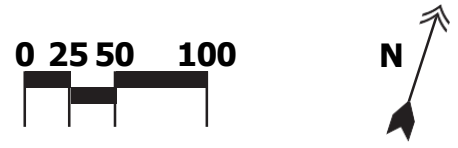


LEGEND:

- ←--→ Primary Circulation
- ◀...▶ Secondary Circulation
- ~> Existing Circulation



CIRCULATION PLAN



LEGEND:



Park Lighting



LIGHTING PLAN













Table 1 – Budget and Funding Sources

Description	Amount
Parks Program Grant Funds Awarded	\$ 7,140,000
Less Casa Casillas Funds	(750,000)
Less Project Design & Other Pre-Construction Expenses	(1,190,000)
Grant Funds Available for Construction	\$ 5,200,000
Construction Cost Estimate	8,722,558
Less Grant Funds Available for Construction	(5,200,000)
Proposed ARPA Fund Reallocation	\$ 3,522,558

Table 2 – ARPA Spending Plan

City of Chula Vista - ARPA Spending Plan					
Category	FY 2022 Amended Budget	FY 2023 Amended Budget*	FY 2023 Proposed Adjustments	FY 2024 Adopted Budget	Total Budget with Proposed Adjustments
EC 1 - Public Health	\$ 9,867,625	\$ 9,867,625	\$ -	\$ -	\$ 19,735,250
HVAC (Project GGV0261)	9,000,000	8,900,000	-	-	17,900,000
COVID Testing/Vaccinations	667,625	367,625	-	-	1,035,250
SBCS Domestic Violence	200,000	200,000	-	-	400,000
Casa Nueva Vida DV Shelter	-	400,000	-	-	400,000
EC 2 - Negative Economic Impacts	\$ 300,000	\$ 300,000	\$ 3,522,558	\$ -	\$ 4,122,558
Jacobs and Cushman San Diego Food Bank	100,000	100,000	-	-	200,000
Alpha Project - Take Back the Streets	100,000	100,000	-	-	200,000
Homeless Supportive Services	100,000	100,000	-	-	200,000
Eucalyptus Park	-	-	3,522,558	-	3,522,558
EC 2 - Economic Development	\$ 2,900,000	\$ -	\$ -	\$ -	\$ 2,900,000
Small Business Grants	2,600,000	-	-	-	2,600,000
Choose Chula	100,000	-	-	-	100,000
Curb/Sidewalk Café Grant	200,000	-	-	-	200,000
EC 3 - Premium Pay to Essential Workers	\$ 916,000	\$ 1,541,000	\$ -	\$ 1,096,000	\$ 3,553,000
EC 5 - Infrastructure	\$ 900,000	\$ -	\$ -	\$ -	\$ 900,000
Broadband Design (Project GGV0263)	900,000	-	-	-	900,000
EC 6 - Revenue Recovery	\$ 11,592,750	\$ 19,350,250	\$ (3,522,558)	\$ (1,096,000)	\$ 26,324,442
Governmental Funds	11,592,750	19,350,250	(3,522,558)	(1,096,000)	26,324,442
TOTAL	\$ 26,476,375	\$ 31,058,875	\$ -	\$ -	\$ 57,535,250

* As of May 23, 2023



Eucalyptus Park Renovations

Recommendation:

**Adopt the proposed
Master Plan and
associated funding
to construct the
proposed
improvements**



ktua

