



San Diego Community Power Updates

Chula Vista City Council

March 28, 2023



Who is San Diego Community Power?





SDCP Mission Statement

San Diego Community Power is a community-owned organization that provides affordable clean energy and invests in the community to create an equitable and sustainable future for the San Diego region.

SDCP Vision Statement

A global leader inspiring innovative solutions to climate change by powering our communities with 100% clean affordable energy while prioritizing equity, sustainability, and high-quality jobs.

Community Choice in California

- Enabled through legislation in 2002
- 25 operating programs, 200 cities and counties
- Community Choice in:
 - 32 out of 40 State Senate Districts
 - 57 out of 80 Assembly Districts

The California Community Choice Association's mission is to support the development and long-term sustainability of locally-run CCA electricity providers throughout California.

Areas of Service:



CALCCA
ADVANCING LOCAL ENERGY CHOICE cal-cca.org

- Serving Customers
- Implementation Plan Filed
- Considering CCA

* Not all towns/cities within a county are served by the local CCA program. Please visit individual agency websites for more detailed service area information. To learn more about CalCCA please visit our website at cal-cca.org.



How It Works

How it Works



SDCP

Buys electricity from renewable sources

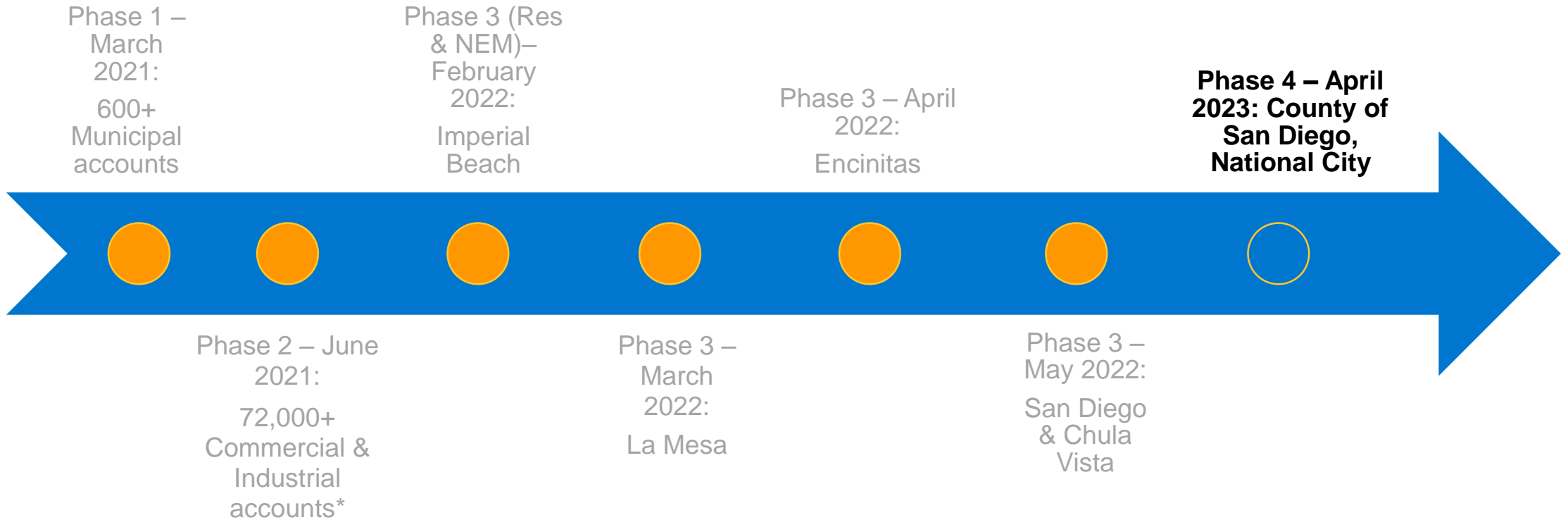
SDG&E

Delivers power and maintains the grid

You

Cleaner power, local control and competitive rates

Enrollment Status




Current Enrollment

Hola National City, saluden a un proveedor de energía más limpio que reinvierte en nuestra comunidad.

San Diego Community Power es un proveedor local de electricidad y servicio de su comunidad que le suministrará energía más limpia.

Para obtener más información, visite SDCommunityPower.org

SDCP has increased its focus on community engagement as it prepares for April enrollment of customers in **National City** and the **unincorporated areas of San Diego County**. Customers on Net Energy Metering (NEM) will enroll as of their true up month starting in April of 2023 through March 2024.



Kumusta National City, pagmasdan ang isang mas malinis na tagapagbigay ng kuryente na muling namumuhunan sa ating komunidad.


Ang San Diego Community Power (SDCP) ay isang lokal na tagapagbigay ng kuryente na maglilingkod sa iyong komunidad sa pamamagitan ng paghahatid sa iyo ng mas malinis na enerhiya.

Inuuna namin ang ating mga komunidad, tumutulong sa iyo na gumawa ng malaking hakbang tungo sa isang mas natututusan na enerhiya sa hinaharap habang binibigyang prayoridad ang pagkakatay-tay at pagpapatay sa mga trabahong lokal na maganda ang pesahod. Kami ay isang lokal na pinanmahalaan, hindi para sa kita, na pampublikong ahensya na nakatuon sa kung ano ang kailangan at pinsakogusto ng mga pamilya pagdating sa kanilang enerhiya.

Ang SDCP ay muling namumuhunan sa mga komunidad na kanilang pinaglilingkuran na pakikibabangan ng mga residente at negosyo sa ating rehiyon.

Alamin pa ang Tungkol dito sa SDCommunityPower.org

Paano Ito Gumagana



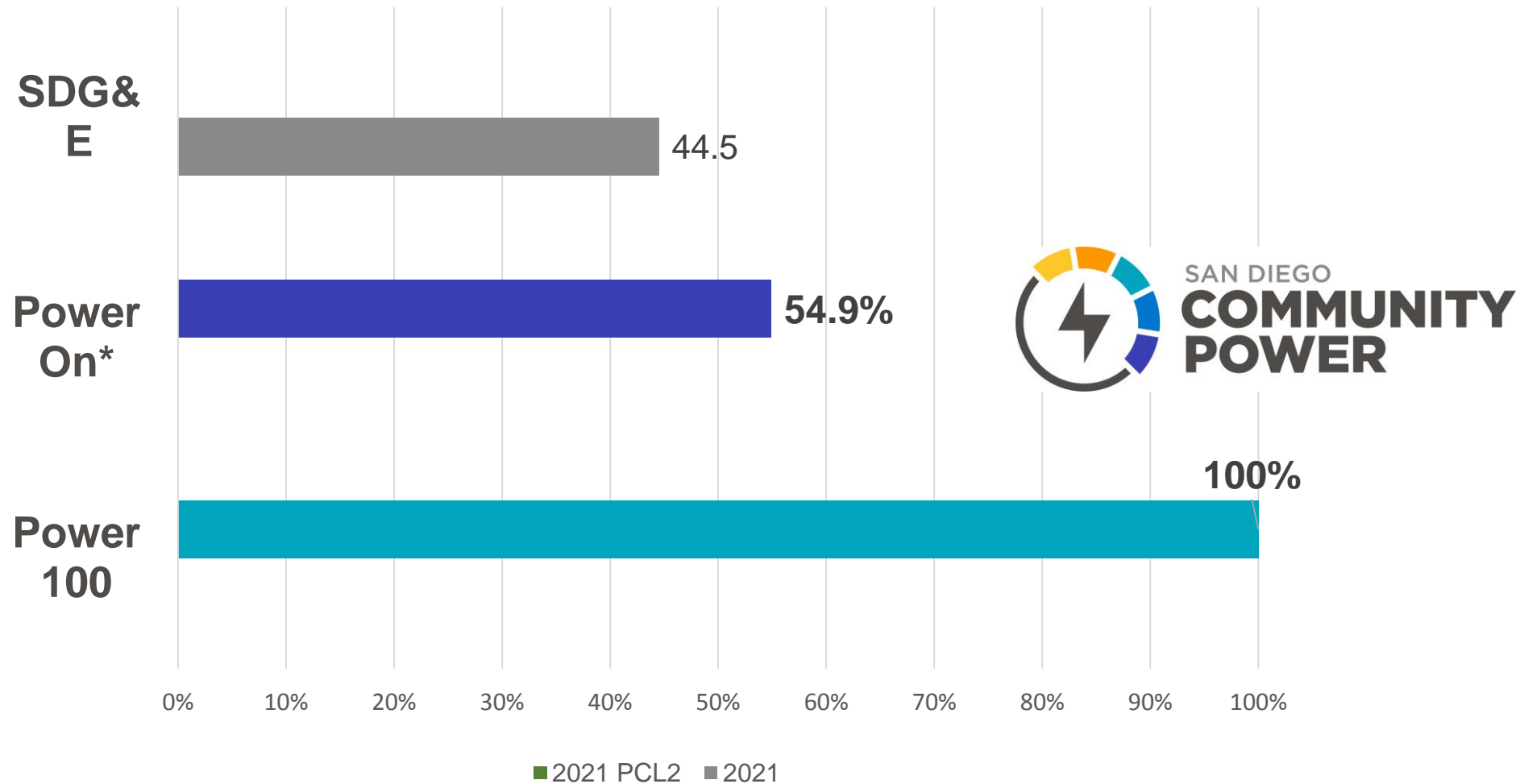
SDCP Bumibilang ng kuryente na mas malinis at mas maraming pagpapaligay sa pagmamuhunan.	SDG&E Naghahatid ng kuryente at pinapanatili ang grid.	IMAKAKAKUNA KA NG Mas malinis na kuryente, lokal na serbisyo at kumportable na mga enghel.
--	--	--



Say hello to a cleaner power provider who reinvests in our community.



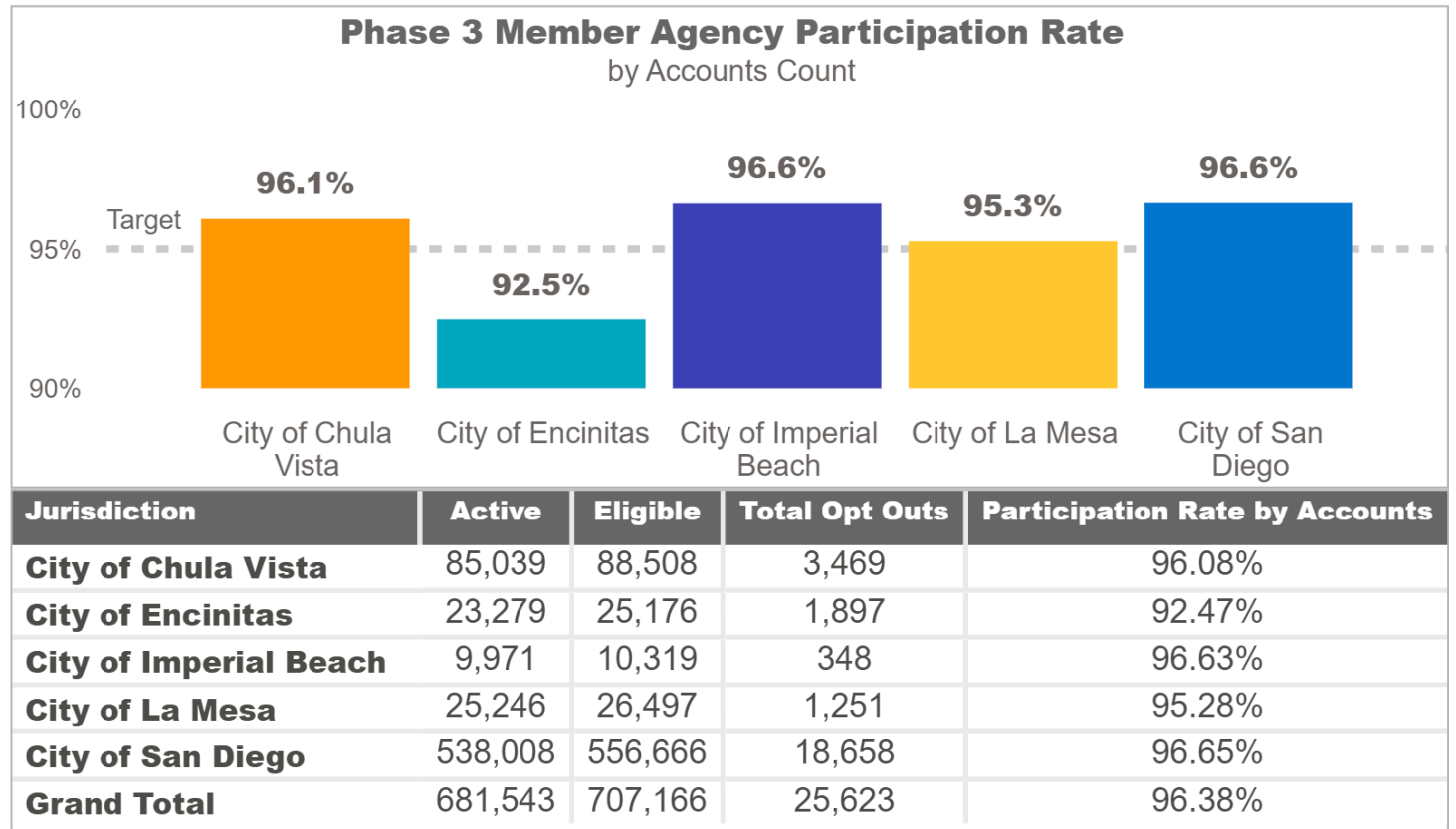
Compare Renewable Energy (2021 PCL)



*SDCP's PowerOn product is at least 50% Renewable + 5% carbon-free

SDCP Customer Participation

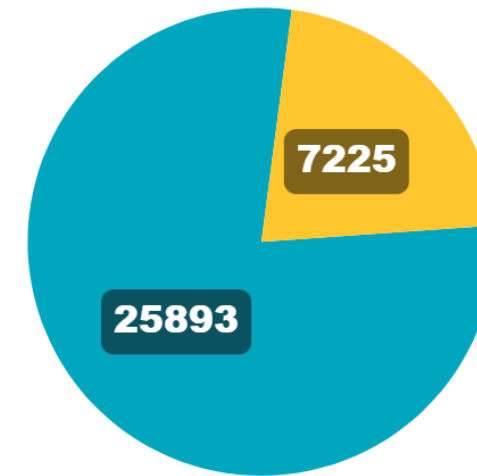
- SDCP currently serves over **754,000** total active accounts, acting as the second largest CCA in terms of accounts
 - ~683,000 Residential
 - ~71,000 Non-Residential
- Roughly 27,000 total opt outs since launch
- Participation rate remains above **95%** in terms of both accounts and load
- Mass enrollment for our customers in National City and Unincorporated County of San Diego is slated to commence in April 2023



Power100 Participation

- Over **33,000** accounts are currently enrolled in SDCP's Power100 service, receiving 100% renewable and carbon-free electricity
 - ~25,500 Residential
 - ~7,500 Non-Residential
- The energy used by these Power100 customers since their opt up (633,142,194 kWh) is the equivalent of avoiding nearly **274,000 metric tons** of Carbon Dioxide
 - This is comparable to removing over **59,000** gasoline-powered passenger vehicles from the road for one year!

Active Customers Enrolled in Power100 Service



● Encinitas Defaulted ● Opted Up

Billing & Rates

Current Rates

TOU Period Weekdays	Summer June 1 - October 31	Winter November 1 - May 31
On-Peak	4:00 p.m. - 9:00 p.m.	4:00 p.m. - 9:00 p.m.
Off-Peak	6:00 a.m. - 4:00 p.m.; 9:00 p.m. - midnight	6:00 a.m. - 4:00 p.m. Excluding 10:00 a.m. - 2:00 p.m. in March and April; 9:00 p.m. - midnight
Super-Off Peak	Midnight - 6:00 a.m.	Midnight - 6:00 a.m. 10:00 a.m. - 2:00 p.m. in March and April

TOU Period Weekends and Holidays	Summer June 1 - October 31	Winter November 1 - May 31
On-Peak	4:00 p.m. - 9:00 p.m.	4:00 p.m. - 9:00 p.m.
Off-Peak	2:00 p.m. - 4:00 p.m.; 9:00 p.m. - midnight	2:00 p.m. - 4:00 p.m.; 9:00 p.m. - midnight
Super-Off Peak	Midnight - 2:00 p.m.	Midnight - 2:00 p.m.

TOU-DR-1	Residential Time-Of-Use		
Season	Charge Type	Time of Use Period	PowerOn
Summer	Generation	On-Peak	\$0.53024
Summer	Generation	Off-Peak	\$0.22959
Summer	Generation	Super Off-Peak	\$0.07169
Winter	Generation	On-Peak	\$0.16831
Winter	Generation	Off-Peak	\$0.08724
Winter	Generation	Super Off-Peak	\$0.06372

DR-SES	Domestic Time-Of-Use For Households With A Solar Energy System		
Season	Charge Type	Time of Use Period	PowerOn
Summer	Generation	On-Peak	\$0.49211
Summer	Generation	Off-Peak	\$0.17080
Summer	Generation	Super Off-Peak	\$0.07169
Winter	Generation	On-Peak	\$0.19977
Winter	Generation	Off-Peak	\$0.13863
Winter	Generation	Super Off-Peak	\$0.06372

Understanding Your Bill

Online Bill Estimator

Account Information
[Where do I find my account information?](#)

Rate
Select Rate ▾

Service Location
Select Location ▾

Bill Ending Month
Select Month ▾

CALCULATE



Bill Explainer Video

Summary of Current Charges

(See page 2 for details)

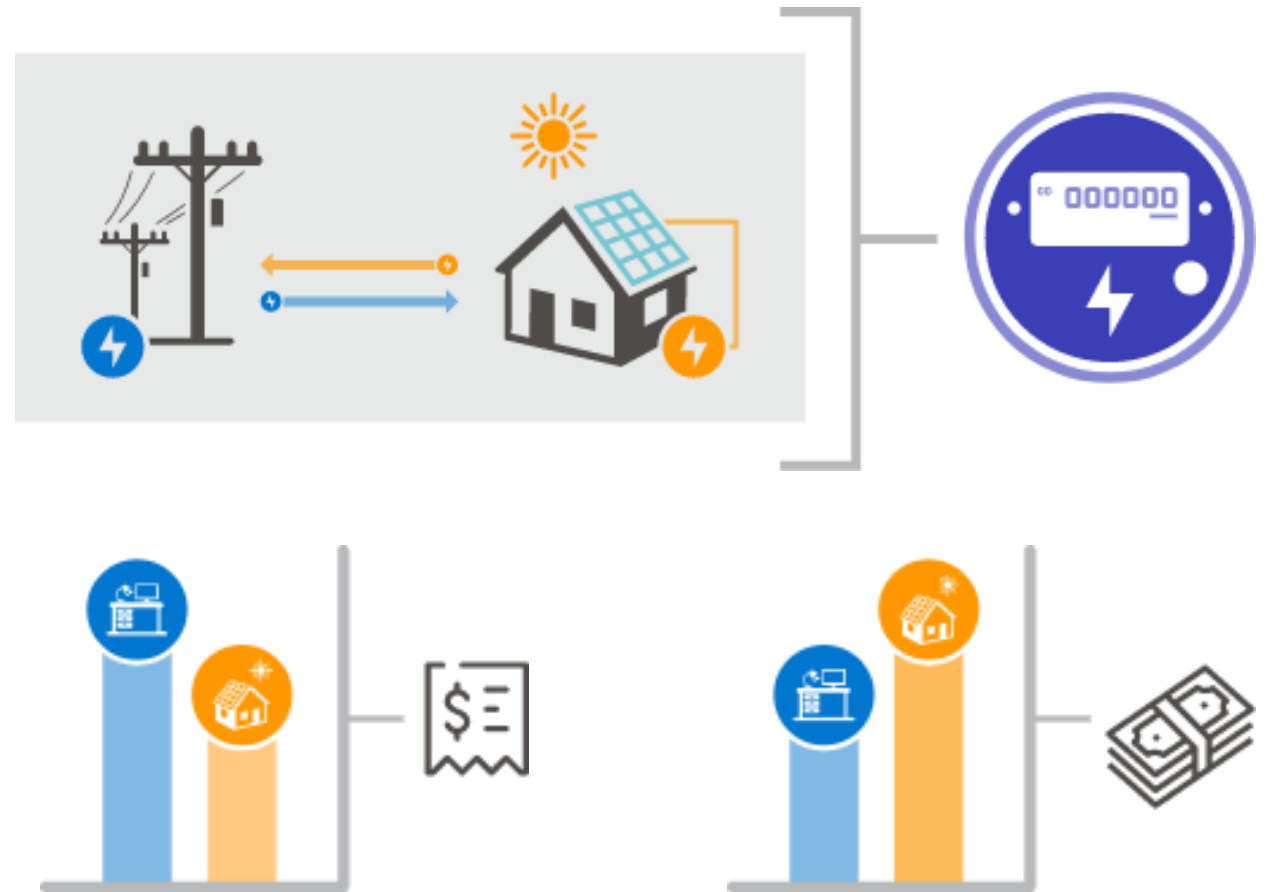
	Billing Period	Usage	Amount(\$)
Electric Delivery	Aug 19, 2021 - Sep 17, 2021	879 kWh	203.50
CCA Electric Generation			124.91
Total Charges this Month			\$328.41

✔ Your electric energy is provided by San Diego Community Power . If you have any questions about the Community Choice Aggregation (CCA) charges on your bill, please contact your CCA at 1-888-382-0169.

Net Energy Metering

Similar to SDG&E's existing NEM program . . . but better!

- Same rate schedules
- Monthly billing instead of annual, with annual billing option available
- Premium Net Surplus Compensation rate is SDG&E's current NSC plus \$0.0075/kWh adder
- Automatic checks if Net Surplus Compensation is \$100 or more, up to \$2,500.



Making a difference

Community Power Plan

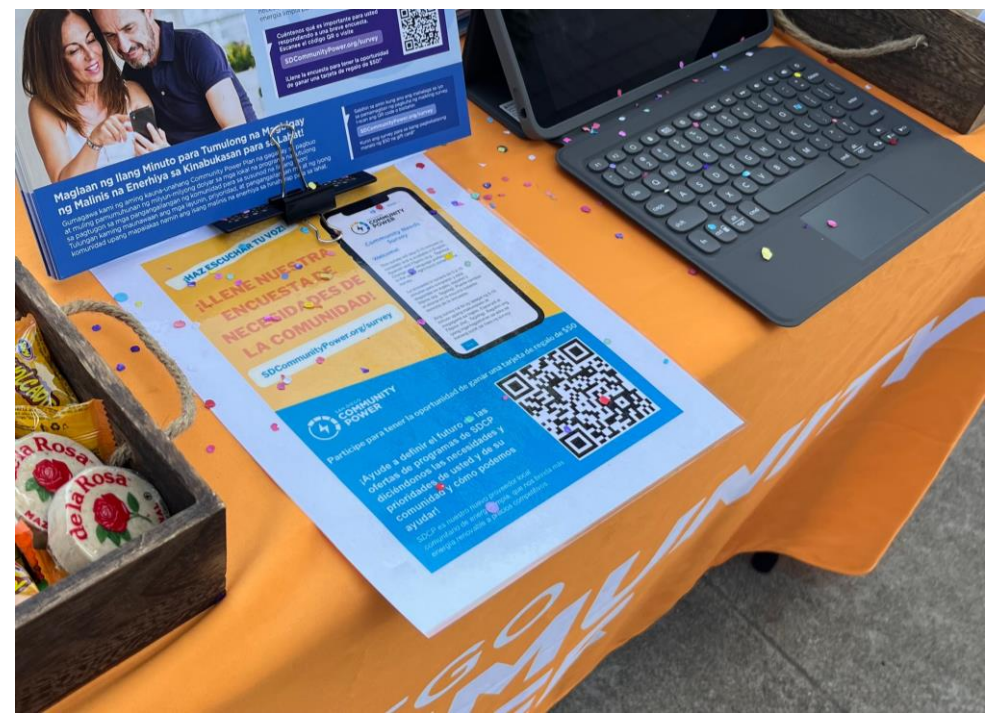
Lays out SDCP's 5-year vision and program strategy to:

-
- Address community needs;
 - Address climate change;
 - Produce economic benefits to the region;
 - Pursue purposeful and focused investment in Communities of Concern;
 - Center economic, environmental, and social equity



Public Engagement

Come say hello @ South Bay Earth Day! We are honored to be Title Sponsors, April 15!



SAVE THE DATE!

APRIL 15 South Bay **Earth Day**

11 A.M. - 4 P.M.
BAYFRONT PARK (OFF J STREET)

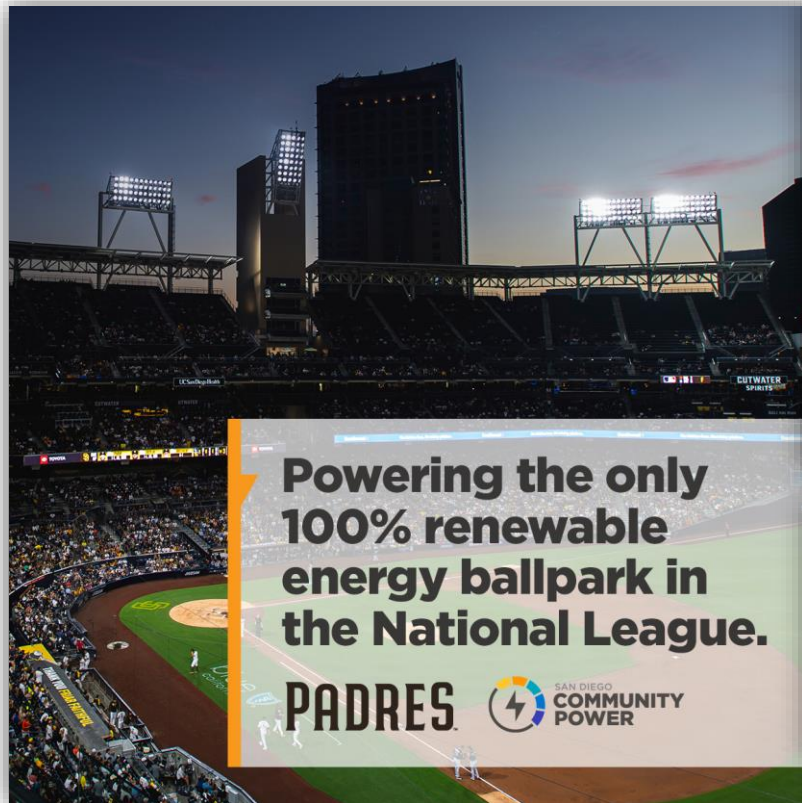
EVENT: SOUTH BAY EARTH DAY

- ✓ Live Entertainment
- ✓ FREE Bicycle Valet
- ✓ FREE Tie-Dye Workshop
- ✓ FREE Fix-it Clinic

CITY OF CHULA VISTA

FREE EVENT!

Building Trusted Partnerships



**Powering the only
100% renewable
energy ballpark in
the National League.**

PADRES 



**San Diego International
Airport Commits to 100
Percent Clean, Renewable
Energy from San Diego
Community Power**



**100% renewable
100% carbon-free**

illumina®



**NEXT
MATCH**

SAT. APR 16 | 7:00 PM
TORERO STADIUM



**A CLEAN ENERGY PARTNER
OF SAN DIEGO WAVE FC**

Community Partners



The Chicano Federation



PROJECT NEW VILLAGE
COMMUNITY • EQUITY • CHANGE





Thank You!

Info@sdcommunitypower.org

[888-382-0169](tel:888-382-0169)

sdcommunitypower.org

