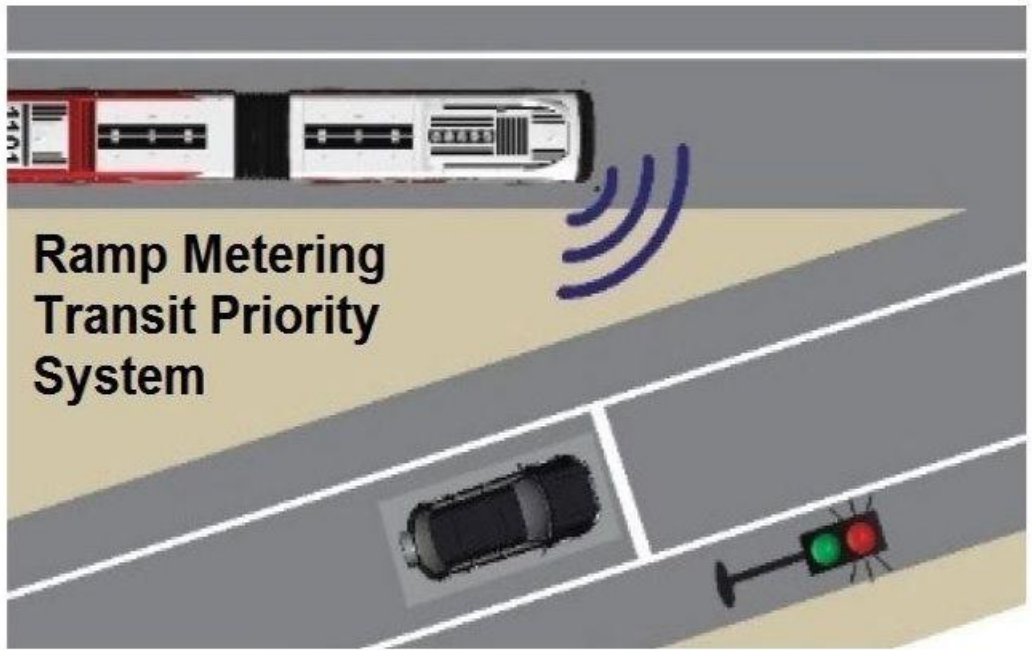
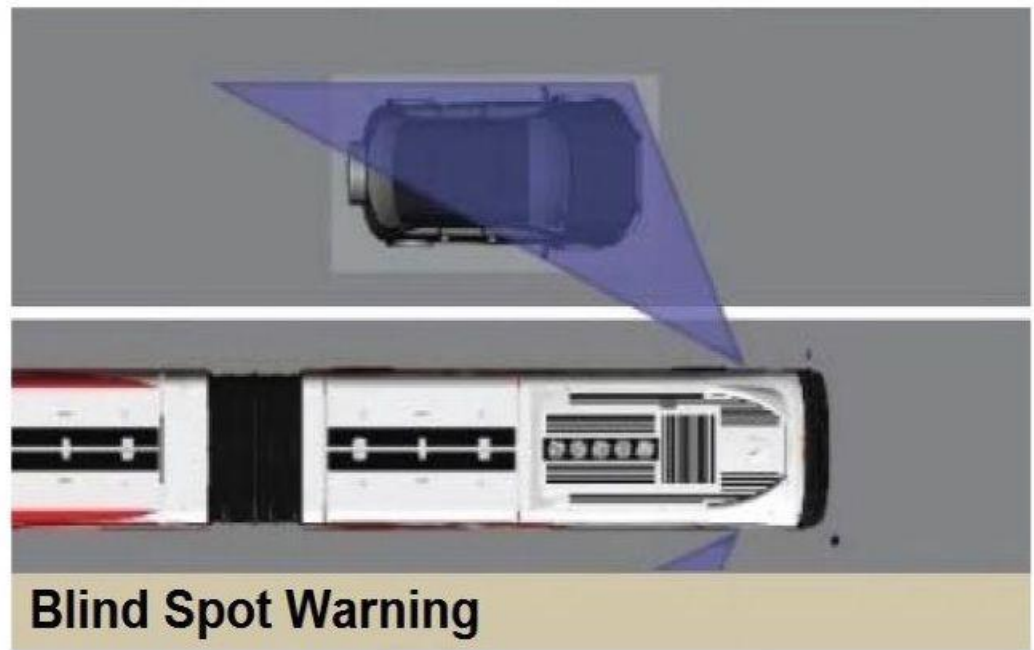
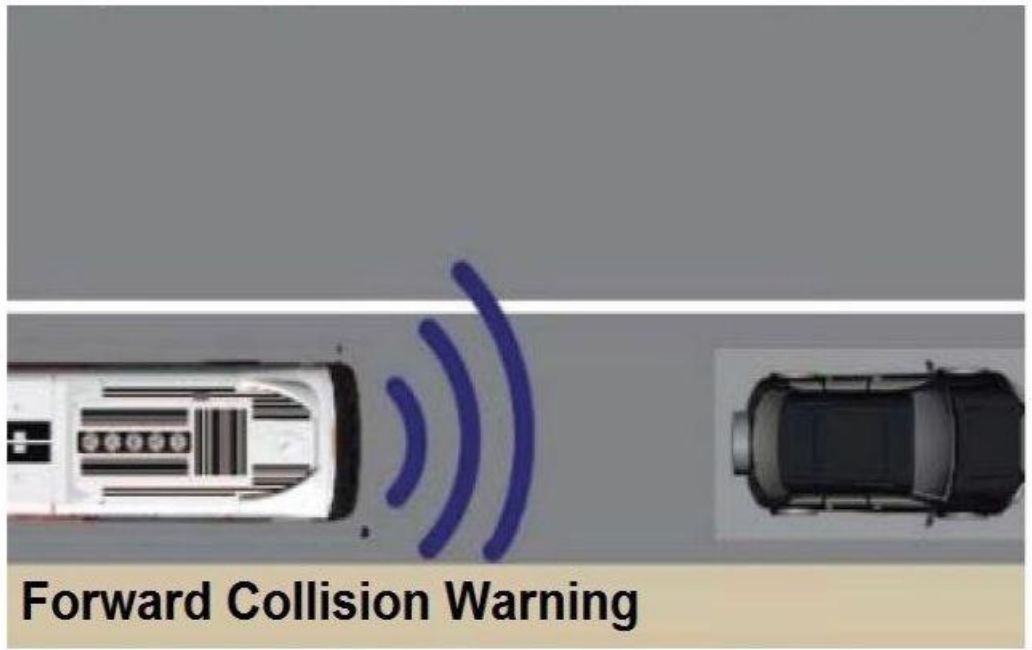
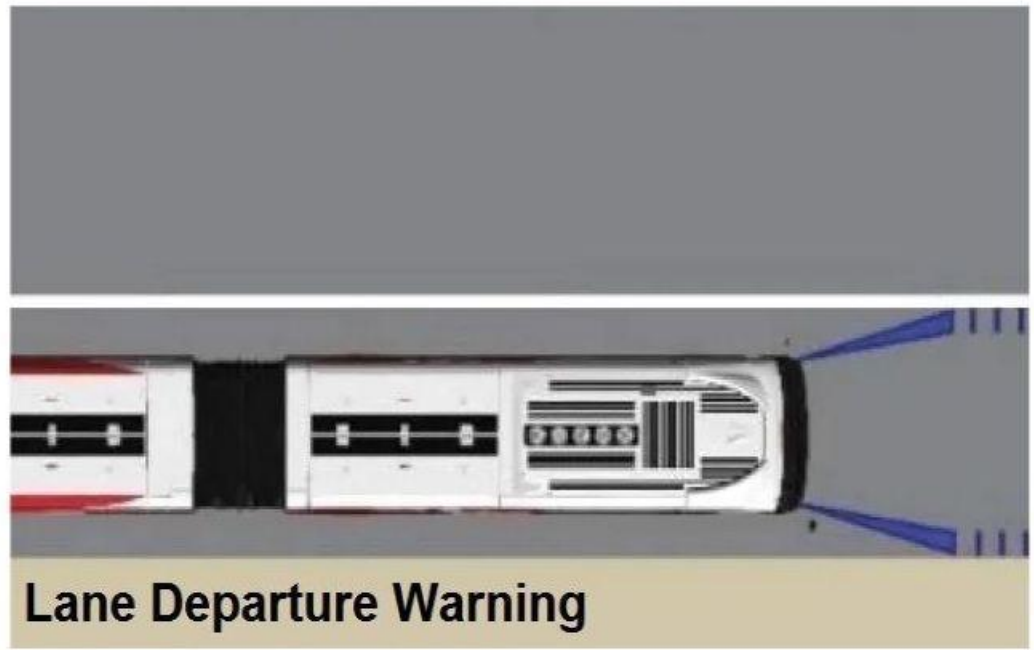
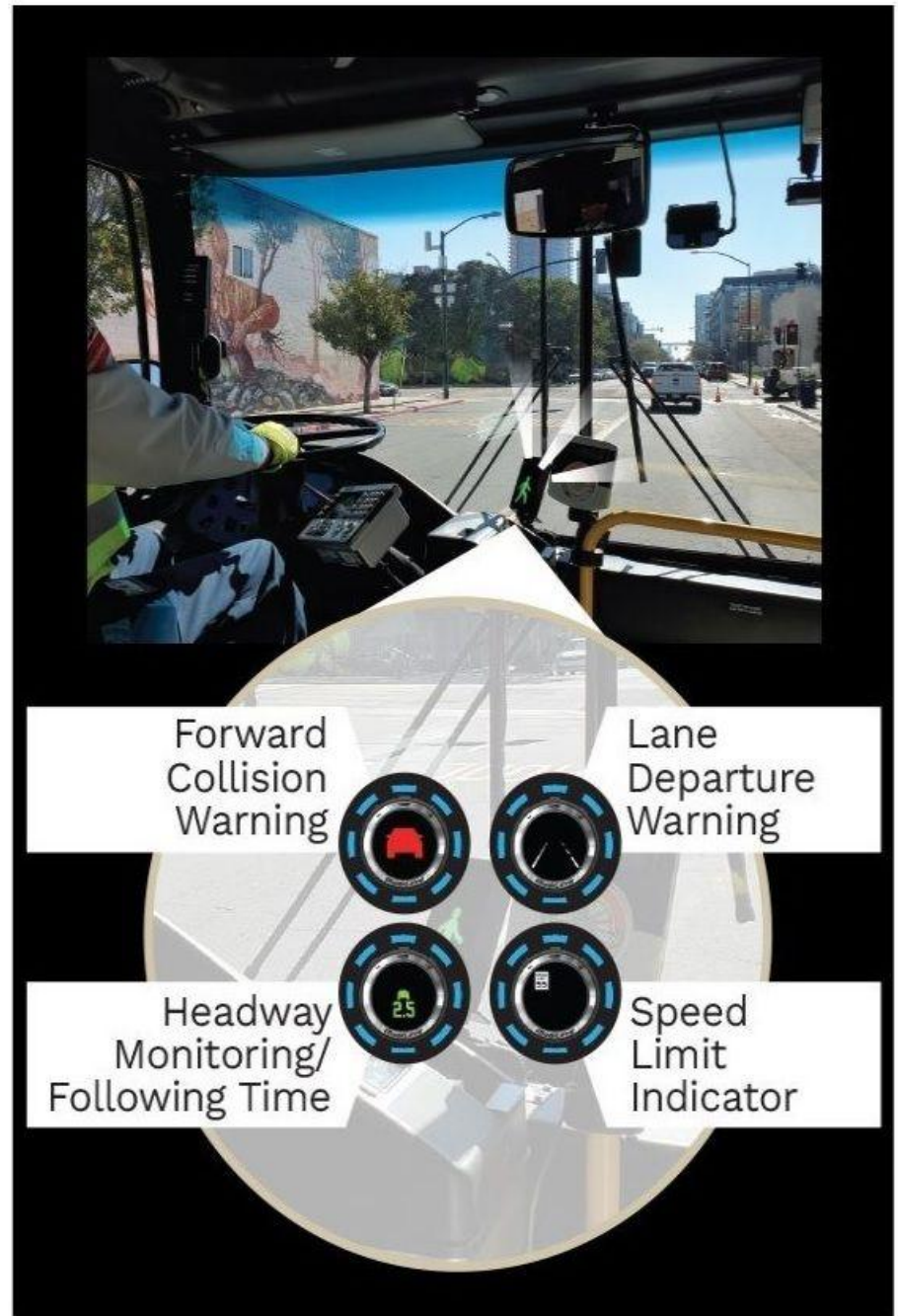
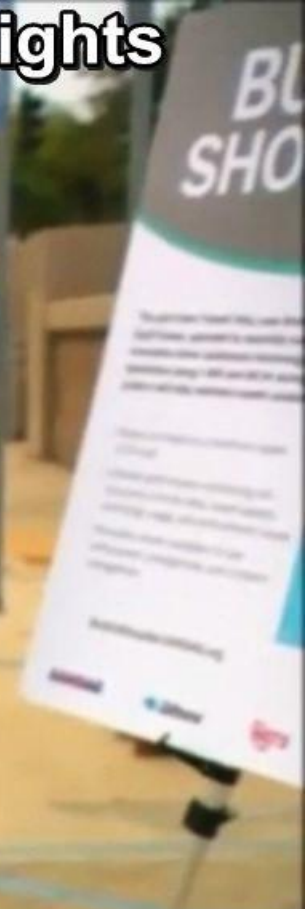


The three-year Bus on Shoulder (BOS) pilot project allows South Bay Rapid buses, to use select shoulders along I-805 and SR 94 between National City and Downtown San Diego, during peak travel times to ensure maintain transit schedules. This project is the region's first use of transit vehicle-to-infrastructure technology. <https://busonshoulder.sandag.org>  



Bus On Emergency Lane Freeway Controls On Ramp Lights



LIVE
6:03 64°

SHARON HUMPHREYS SANDAG

<https://busonshoulder.sandag.org/>



**PROJECT ALLOWS SOUTH BAY RAPID BUSES TO RUN ON CLIMATE PRIORITY
SELECT FREEWAY SHOULDER DURING PEAK TRAVEL TIMES IGNORES SAFETY**

CALIFORNIA SANDAG PROPOSED TAXES

<https://www.kusi.com/proposed-sandag-plan-will-charge-san-diegans-for-every-mile-traveled-increase-sales-tax/>



Future Local Sales Tax Ballot Measure – half-cent measure (would require ballot measure)

Future MTS Sales Tax ballot measure – half-cent sales tax after 2024 presidential election (would require ballot measure) **PROPOSED MTS SALES TAX AND LIBRARY TAX NOV 2022 BALLOT**

Future State Mileage-Based Road User Fee - begin in 2026 that would \$0.023 per mile with a half cent increase on an annual basis (would require legislation)

Future Local Road User Charge - \$0.02 per mile starting in 2026

**MILEAGE TAX EXISTING ROADS
ALREADY PAID BY TAX PAYERS**

Future Ridehailing (UBER/LYFT) User Fee - \$1.25 for single trips; \$0.65 for pooled trips