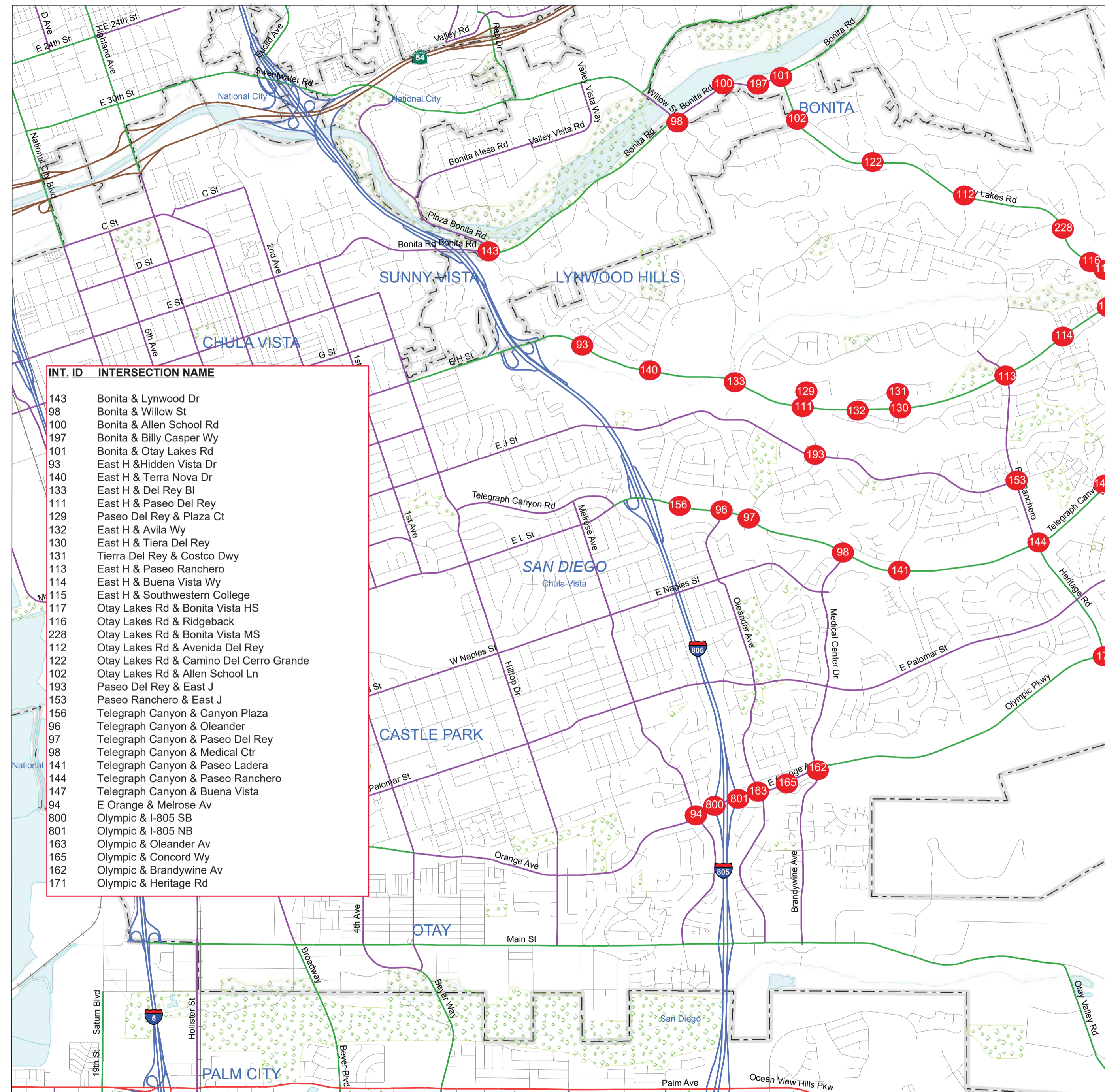


VICINITY & PROJECT LOCATION MAP

SEE MAP 15Y35

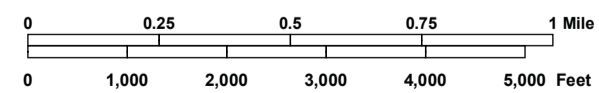


SEE MAP 15Y44

SEE MAP 16Y41

| INT. ID | INTERSECTION NAME |
|---------|---|
| 143 | Bonita & Lynwood Dr |
| 98 | Bonita & Willow St |
| 100 | Bonita & Allen School Rd |
| 197 | Bonita & Billy Casper Wy |
| 101 | Bonita & Otay Lakes Rd |
| 93 | East H & Hidden Vista Dr |
| 140 | East H & Terra Nova Dr |
| 133 | East H & Del Rey Bl |
| 111 | East H & Paseo Del Rey |
| 129 | Paseo Del Rey & Plaza Ct |
| 132 | East H & Avila Wy |
| 130 | East H & Tierra Del Rey |
| 131 | Tierra Del Rey & Costco Dwy |
| 113 | East H & Paseo Rancho |
| 114 | East H & Buena Vista Wy |
| 115 | East H & Southwestern College |
| 117 | Otay Lakes Rd & Bonita Vista HS |
| 116 | Otay Lakes Rd & Ridgeback |
| 228 | Otay Lakes Rd & Bonita Vista MS |
| 112 | Otay Lakes Rd & Avenida Del Rey |
| 122 | Otay Lakes Rd & Camino Del Cerro Grande |
| 102 | Otay Lakes Rd & Allen School Ln |
| 193 | Paseo Del Rey & East J |
| 153 | Paseo Rancho & East J |
| 156 | Telegraph Canyon & Canyon Plaza |
| 96 | Telegraph Canyon & Oleander |
| 97 | Telegraph Canyon & Paseo Del Rey |
| 98 | Telegraph Canyon & Medical Ctr |
| 141 | Telegraph Canyon & Paseo Ladera |
| 144 | Telegraph Canyon & Paseo Rancho |
| 147 | Telegraph Canyon & Buena Vista |
| 94 | E Orange & Melrose Av |
| 800 | Olympic & I-805 SB |
| 801 | Olympic & I-805 NB |
| 163 | Olympic & Oleander Av |
| 165 | Olympic & Concord Wy |
| 162 | Olympic & Brandywine Av |
| 171 | Olympic & Heritage Rd |

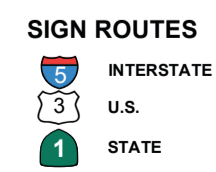
APPROVED Date: 01/02/2018
 FEDERAL HIGHWAY ADMINISTRATION
Wesley Puthal-Khan
 FOR: VINCENT P. MAMMAMO
 DIVISION ADMINISTRATOR



STATE OF CALIFORNIA
 DEPARTMENT OF TRANSPORTATION
 In Cooperation With The
 FEDERAL HIGHWAY ADMINISTRATION
 AND LOCAL AGENCIES

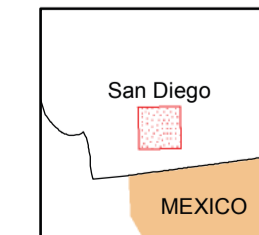


SEE MAP 15Y55



FUNCTIONAL CLASSIFICATION SYSTEM

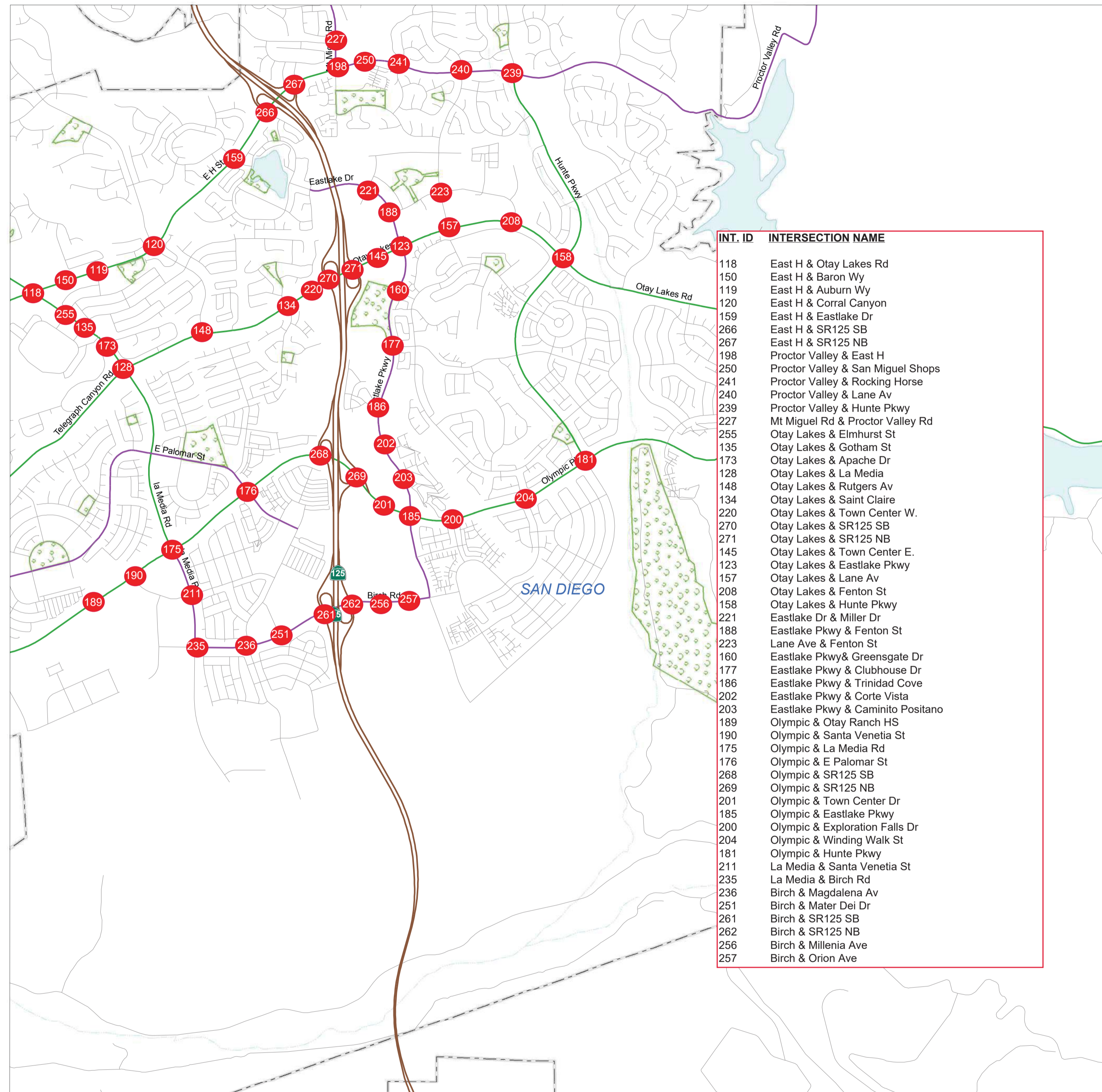
| | | |
|--------------------------|---|-------------------|
| INTERSTATE | 1 | Blue line |
| OTHER FWY OR EXPWY | 2 | Red line |
| OTHER PRINCIPAL ARTERIAL | 3 | Green line |
| MINOR ARTERIAL | 4 | Yellow line |
| MAJOR COLLECTOR | 5 | Purple line |
| MINOR COLLECTOR | 6 | Light purple line |
| LOCAL | 7 | Grey line |



MAP 15Y45

VICINITY & PROJECT LOCATION MAP

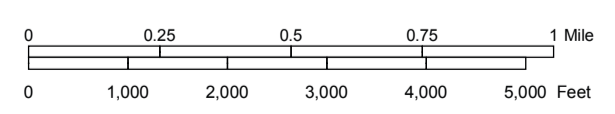
SEE MAP 16Y31



SEE MAP 15Y45

SEE MAP 16Y42

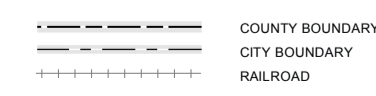
APPROVED Date 03/29/12
 FEDERAL HIGHWAY ADMINISTRATION
Wesley Rutal-Kane
 FOR: VINCENT P. MAMMAMO
 DIVISION ADMINISTRATOR



STATE OF CALIFORNIA
 DEPARTMENT OF TRANSPORTATION
 In Cooperation With The
 FEDERAL HIGHWAY ADMINISTRATION
 AND LOCAL AGENCIES

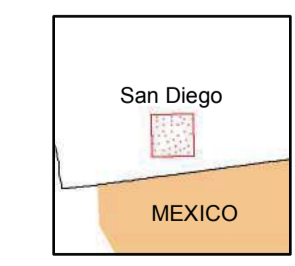


SEE MAP 16Y51



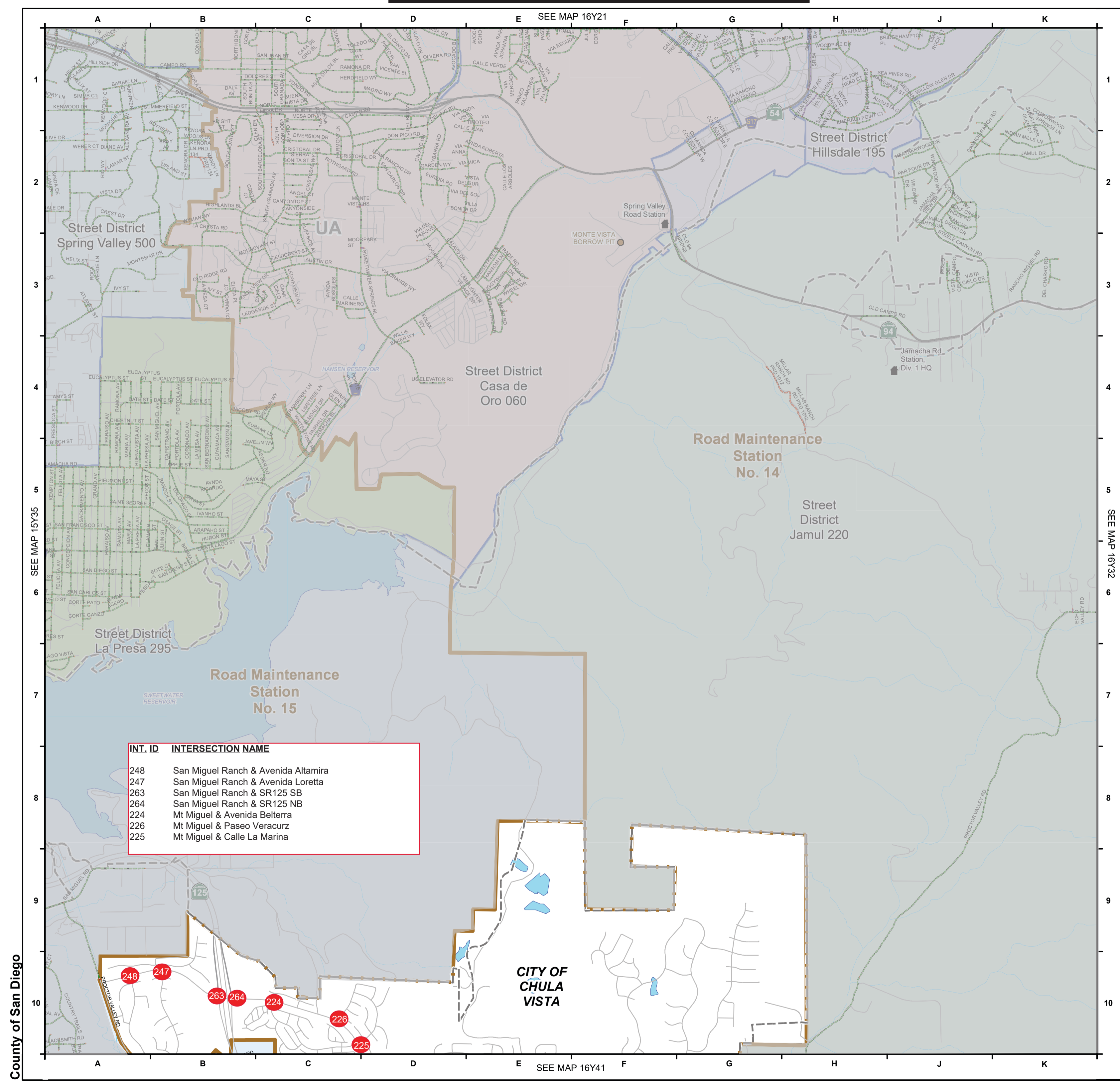
FUNCTIONAL CLASSIFICATION SYSTEM

| | | |
|--------------------------|---|-----------------|
| INTERSTATE | 1 | Blue line |
| OTHER FWY OR EXPWY | 2 | Red line |
| OTHER PRINCIPAL ARTERIAL | 3 | Green line |
| MINOR ARTERIAL | 4 | Yellow line |
| MAJOR COLLECTOR | 5 | Purple line |
| MINOR COLLECTOR | 6 | Light blue line |
| LOCAL | 7 | Grey line |



MAP 16Y41

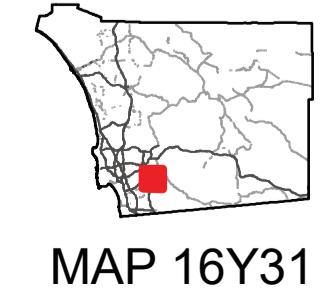
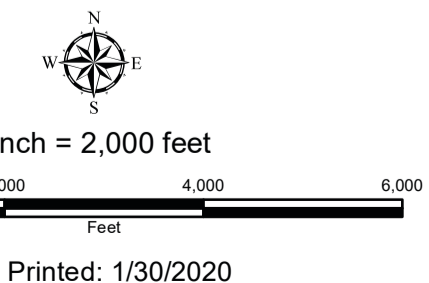
VICINITY & PROJECT LOCATION MAP



County of San Diego



- Interstate
 - State
 - County
- Maintained Roads
 - PRD Roads
 - Private Roads
 - City Roads with County Assets
 - Z Roads
- Road Station Location
 - Road Maintenance Station Boundaries
 - Street District Boundaries
 - Highway
 - Railroads
- Urban/Rural (Caltrans)
 - Active Quarries
 - Streams
 - Lakes



THIS MAP DATA IS PROVIDED WITHOUT WARRANTY OF ANY KIND, EITHER EXPRESS OR IMPLIED, INCLUDING BUT NOT LIMITED TO, THE IMPLIED WARRANTIES OF MERCHANTABILITY AND FITNESS FOR A PARTICULAR PURPOSE. This product may contain information from the SANDAG Regional Information System which cannot be reproduced without the written permission of SANDAG. This product may contain information reproduced with permission granted by RAND McNALLY & COMPANY®. It is unlawful to copy or reproduce all or any part thereof, whether for personal use or resale. Copyright © 2020 - All Rights Reserved. Full text of this legal notice can be found at: <http://www.sandagis.org/legal/Notices.htm>

Controller Equipment Inventory

| Adaptive | | | | | |
|----------|-------------------------------------|------------------------------------|---------|-----------------|----------|
| Int. ID | Name | Controller Program | Version | Controller Type | Protocol |
| 93 | 093 East H/Hidden Vista | Trafficware Patriot + Synchrogreen | V76 | 2070 ATC | NTCIP |
| 94 | 094 East Orange/Melrose | McCain 233 RV | 2.1E | 170E | QuicComm |
| 96 | 096 Crest/Oleander/Telegraph Cyn | Trafficware Patriot + Synchrogreen | V76 | 2070 ATC | NTCIP |
| 97 | 097 Elks/Paseo Del Rey/Telegraph Cy | Trafficware Patriot + Synchrogreen | V76 | 2070 ATC | NTCIP |
| 98 | 098 Medical Center/Telegraph Cyn | Trafficware Patriot + Synchrogreen | V76 | 2070 ATC | NTCIP |
| 99 | 099 Bonita/Willow | McCain 2033 | 1.4 | 2070E | QuicComm |
| 100 | 100 Allen School/Bonita | McCain 233 RV | 2.1E | 170E | QuicComm |
| 101 | 101 Bonita/Otay Lakes | McCain 233 RV | 2.1E | 170E | QuicComm |
| 102 | 102 Allen School/Otay Lakes | McCain 233 RV | 2.1E | 170E | QuicComm |
| 111 | 111 East H/Paseo Del Rey | Trafficware Patriot + Synchrogreen | V76 | 2070 ATC | NTCIP |
| 112 | 112 Avenida Del Rey/Otay Lakes | McCain 233 RV | 2.1E | 170E | QuicComm |
| 113 | 113 East H/Paseo Ranchero | Trafficware Patriot + Synchrogreen | V76 | 2070 ATC | NTCIP |
| 114 | 114 Buena Vista/East H | Trafficware Patriot + Synchrogreen | V76 | 2070 ATC | NTCIP |
| 115 | 115 East H/Southwestern College | Trafficware Patriot + Synchrogreen | V76 | 2070 ATC | NTCIP |
| 116 | 116 Canyon/Otay Lakes/Ridgeback | Trafficware Patriot + Synchrogreen | V76 | 2070 ATC | NTCIP |
| 117 | 117 Bonita Vista HS/Otay Lakes | Trafficware Patriot + Synchrogreen | V76 | 2070 ATC | NTCIP |
| 118 | 118 East H/Otay Lakes | Trafficware Patriot + Synchrogreen | V76 | 2070 ATC | NTCIP |
| 119 | 119 Auburn/East H | McCain 2033 | 1.4 | 2070E | QuicComm |
| 120 | 120 Corral Canyon/East H/Rutgers | McCain 233 RV | 2.1E | 170E | QuicComm |
| 122 | 122 Cerro Grande/Otay Lakes | McCain 233 RV | 2.1E | 170E | QuicComm |
| 123 | 123 Eastlake Parkway/Otay Lakes | McCain 233 RV | 2.1E | 170E | QuicComm |
| 128 | 128 La Media/Otay Lakes/Tele Cyn | Trafficware Patriot + Synchrogreen | V76 | 2070 ATC | NTCIP |
| 129 | 129 Paseo Del Rey/Plaza | Trafficware Patriot + Synchrogreen | V76 | 2070 ATC | NTCIP |
| 130 | 130 East H/Tierra Del Rey | Trafficware Patriot + Synchrogreen | V76 | 2070 ATC | NTCIP |
| 131 | 131 Costco/Tierra Del Rey | Trafficware Patriot + Synchrogreen | V76 | 2070 ATC | NTCIP |
| 132 | 132 East H/Avila Wy | Trafficware Patriot + Synchrogreen | V76 | 2070 ATC | NTCIP |
| 133 | 133 Del Rey/East H | Trafficware Patriot + Synchrogreen | V76 | 2070 ATC | NTCIP |
| 134 | 134 Otay Lakes/St Claire | McCain 233 RV | 2.1E | 170E | QuicComm |
| 135 | 135 Gotham/Otay Lakes | Trafficware Patriot + Synchrogreen | V76 | 2070 ATC | NTCIP |
| 140 | 140 East H/Terra Nova | Trafficware Patriot + Synchrogreen | V76 | 2070 ATC | NTCIP |
| 141 | 141 Paseo Ladera/Telegraph Cyn | Trafficware Patriot + Synchrogreen | V76 | 2070 ATC | NTCIP |
| 143 | 143 Bonita/Lynwood/Plaza Bonita | McCain 233 RV | 2.1E | 170E | QuicComm |
| 144 | 144 Paseo Ranchero/Telegraph Cyn | Trafficware Patriot + Synchrogreen | V76 | 2070 ATC | NTCIP |
| 145 | 145 Otay Lakes/Village Center East | McCain 233 RV | 2.1E | 170E | QuicComm |
| 147 | 147 Buena Vista/Telegraph Cyn | Trafficware Patriot + Synchrogreen | V76 | 2070 ATC | NTCIP |
| 148 | 148 Otay Lakes/Rutgers | McCain 233 RV | 2.1E | 170E | QuicComm |
| 150 | 150 Bonita Vista HS/East H | Trafficware Patriot + Synchrogreen | V76 | 2070 ATC | NTCIP |
| 153 | 153 East J/Paseo Ranchero | Trafficware Patriot + Synchrogreen | V76 | 2070 ATC | NTCIP |
| 155 | 155 Clubhouse/Hunte | McCain 233 RV | 2.1E | 170E | QuicComm |
| 156 | 156 Canyon Plaza/Telegraph Cyn | Trafficware Patriot + Synchrogreen | V76 | 2070 ATC | NTCIP |
| 157 | 157 Lane/Otay Lakes | McCain 233 RV | 2.1E | 170E | QuicComm |
| 158 | 158 Hunte/Otay Lakes | McCain 233 RV | 2.1E | 170E | QuicComm |
| 159 | 159 East H/Eastlake Dr | McCain 233 RV | 2.1E | 170E | QuicComm |
| 160 | 160 Eastlake/Greensgate | McCain 233 RV | 2.1E | 170E | QuicComm |
| 162 | 162 Brandywine/Olympic | McCain 233 RV | 2.1E | 170E | QuicComm |
| 163 | 163 Oleander/Olympic | McCain 233 RV | 2.1E | 170E | QuicComm |
| 164 | 164 Hunte/Greensview/King Creek | McCain 233 RV | 2.1E | 170E | QuicComm |
| 165 | 165 Concord/Olympic | McCain 233 RV | 2.1E | 170E | QuicComm |
| 171 | 171 Heritage/Olympic | McCain 233 RV | 2.1E | 170E | QuicComm |
| 173 | 173 Apache/Miracosta/Otay Lakes | Trafficware Patriot + Synchrogreen | V76 | 2070 ATC | NTCIP |
| 175 | 175 La Media/Olympic | McCain 233 RV | 2.1E | 170E | QuicComm |
| 176 | 176 East Palomar/Olympic | McCain Omni eX | 1.11 | 2070 ATC | NTCIP |
| 177 | 177 Clubhouse/Eastlake | McCain 233 RV | 2.1E | 170E | QuicComm |
| 181 | 181 Hunte/Olympic | McCain 233 RV | 2.1E | 170E | QuicComm |
| 185 | 185 Eastlake/Olympic | McCain 233 RV | 2.1E | 170E | QuicComm |
| 186 | 186 Eastlake/Trinidad Cove | McCain 233 RV | 2.1E | 170E | QuicComm |
| 188 | 188 Eastlake/Fenton | McCain 233 RV | 2.1E | 170E | QuicComm |
| 189 | 189 High School/Olympic | McCain 233 RV | 2.1E | 170E | QuicComm |
| 190 | 190 Olympic/Santa Venetia | McCain 233 RV | 2.1E | 170E | QuicComm |
| 193 | 193 East J/Paseo Del Rey | McCain 233 RV | 2.1E | 170E | QuicComm |
| 197 | 197 Billy Casper/Bonita | McCain 233 RV | 2.1E | 170E | QuicComm |
| 198 | 198 East H/Miguel/Proctor Valley | McCain 233 RV | 2.1E | 170E | QuicComm |
| 200 | 200 Exploration Falls/Olympic | McCain 233 RV | 2.1E | 170E | QuicComm |
| 201 | 201 Olympic/Town Center | McCain 233 RV | 2.1E | 170E | QuicComm |
| 202 | 202 Eastlake/Corte Vista | McCain 233 RV | 2.1E | 170E | QuicComm |
| 203 | 203 Eastlake/Caminito Positano | McCain 233 RV | 2.1E | 170E | QuicComm |
| 204 | 204 Olympic/Windingwalk | McCain 233 RV | 2.1E | 170E | QuicComm |
| 208 | 208 Fenton/Otay Lakes | McCain 233 RV | 2.1E | 170E | QuicComm |
| 211 | 211 La Media/Santa Venetia | McCain 233 RV | 2.1E | 170E | QuicComm |
| 220 | 220 Otay Lakes/Village Ctr West | McCain 233 RV | 2.1E | 170E | QuicComm |
| 221 | 221 Eastlake/Miller | McCain 233 RV | 2.1E | 170E | QuicComm |
| 223 | 223 Fenton/Lane | McCain 233 RV | 2.1E | 170E | QuicComm |

Controller Equipment Inventory

| Adaptive | | | | | |
|----------|-----------------------------------|------------------------------------|---------|-----------------|----------|
| Int. ID | Name | Controller Program | Version | Controller Type | Protocol |
| 224 | 224 Ave Belterra/Mt Miguel | McCain 233 RV | 2.1E | 170E | QuicComm |
| 225 | 225 Calle La Marina/Mt Miguel | McCain 233 RV | 2.1E | 170E | QuicComm |
| 226 | 226 Mt Miguel/Paseo Veracruz | McCain 233 RV | 2.1E | 170E | QuicComm |
| 227 | 227 Mt Miguel/Proctor Valley (N) | McCain 233 RV | 2.1E | 170E | QuicComm |
| 228 | 228 Bonita Vista MS/Otay Lakes | Trafficware Patriot + Synchrogreen | V76 | 2070 ATC | NTCIP |
| 234 | 234 Hunte/So Greensview | McCain 233 RV | 2.1E | 170E | QuicComm |
| 235 | 235 Birch/La Media | McCain 233 RV | 2.1E | 170E | QuicComm |
| 236 | 236 Birch/Magdalen | McCain 233 RV | 2.1E | 170E | QuicComm |
| 239 | 239 Hunte/Proctor Valley | McCain 233 RV | 2.1E | 170E | QuicComm |
| 240 | 240 Lane/Proctor Valley | McCain 233 RV | 2.1E | 170E | QuicComm |
| 241 | 241 Proctor Valley/Rocking Horse | McCain 233 RV | 2.1E | 170E | QuicComm |
| 242 | 242 Duncan Ranch/Proctor Valley | McCain 233 RV | 2.1E | 170E | QuicComm |
| 247 | 247 Ave Loretta/San Miguel Ranch | McCain 233 RV | 2.1E | 170E | QuicComm |
| 248 | 248 Ave Altamira/San Miguel Ranch | McCain 233 RV | 2.1E | 170E | QuicComm |
| 250 | 250 Proctor Valley/SM Ranch Shops | McCain 233 RV | 2.1E | 170E | QuicComm |
| 251 | 251 Birch/Mater Dei | McCain 233 RV | 2.1E | 170E | QuicComm |
| 255 | 255 Elmhurst/Otay Lakes | Trafficware Patriot + Synchrogreen | V76 | 2070 ATC | NTCIP |
| 256 | 256 Birch/Millenia | McCain 233 RV | 2.1E | 170E | QuicComm |
| 257 | 257 Birch/Orion | McCain 233 RV | 2.1E | 170E | QuicComm |
| 261 | 261 Birch/SR125 SB | McCain 233 RV | 2.1E | 170E | QuicComm |
| 262 | 262 Birch/SR125 NB | McCain 233 RV | 2.1E | 170E | QuicComm |
| 263 | 263 S Miguel Ranch/SR125 SB | McCain 233 RV | 2.1E | 170E | QuicComm |
| 264 | 264 S Miguel Ranch/SR125 NB | McCain 233 RV | 2.1E | 170E | QuicComm |
| 266 | 266 East H/SR125 SB | McCain 233 RV | 2.1E | 170E | QuicComm |
| 267 | 267 East H/SR125 NB | McCain 233 RV | 2.1E | 170E | QuicComm |
| 268 | 268 Olympic/SR125 SB | McCain 233 RV | 2.1E | 170E | QuicComm |
| 269 | 269 Olympic/SR125 NB | McCain 233 RV | 2.1E | 170E | QuicComm |
| 270 | 270 Otay Lakes/SR125 SB | McCain 233 RV | 2.1E | 170E | QuicComm |
| 271 | 271 Otay Lakes/SR125 NB | McCain 233 RV | 2.1E | 170E | QuicComm |
| 800 | 800 I805/SB Ramp | - | C8 | 170E | - |
| 801 | 801 I805/NB Ramp | - | C8 | 170E | - |