



**Otay Ranch Village 3
CFD Annexation No. 97-2
Improvement Area C, Annexation No. 12**

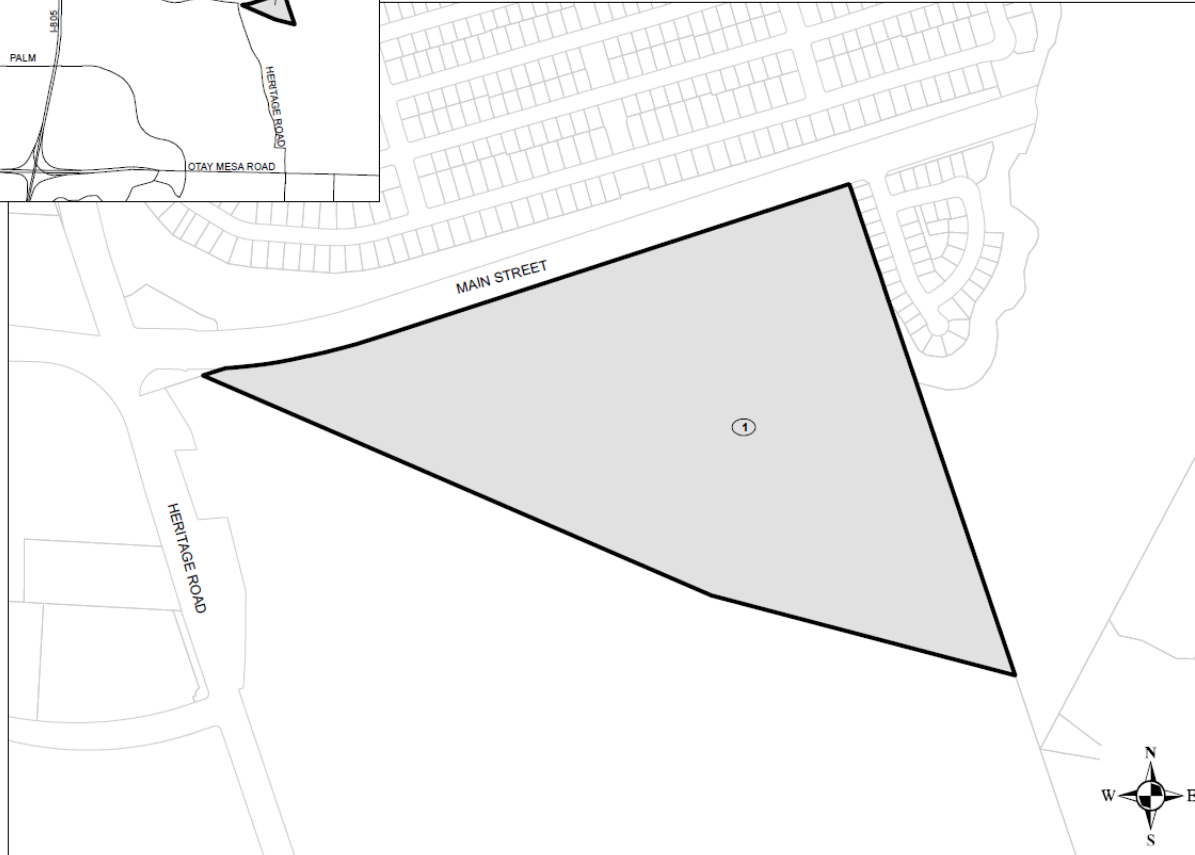
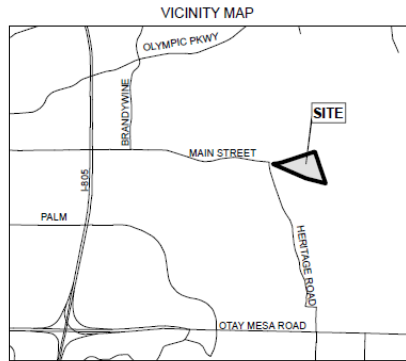
**City Council Meeting
Item 7.1
April 26, 2022**



SURROUNDING USES

- TM condition requires Neighborhood R-20 to be annexed into CFD 97-2 for long-term maintenance of open space and lands within the Otay Ranch Preserve
- The City Council's action on 3.15.22 initiated formal proceedings (Resolution of Intention) to annex R-20 into CFD 97-2 (Preserve Maintenance District), Improvement Area "C", Annexation No. 12

**ANNEXATION MAP NO. 12 OF
COMMUNITY FACILITIES DISTRICT NO. 97-2
(PRESERVE MAINTENANCE DISTRICT)**
CITY OF CHULA VISTA
COUNTY OF SAN DIEGO, STATE OF CALIFORNIA



FILED IN THE OFFICE OF THE CITY CLERK OF THE CITY OF CHULA VISTA THIS _____ DAY _____, 20__.

CITY CLERK
CITY OF CHULA VISTA
STATE OF CALIFORNIA

I HEREBY CERTIFY THAT THE WITHIN MAP SHOWING PROPOSED BOUNDARIES OF ANNEXATION MAP NO. 12 TO COMMUNITY FACILITIES DISTRICT NO. 97-2 (PRESERVE MAINTENANCE DISTRICT) OF THE CITY OF CHULA VISTA, COUNTY OF SAN DIEGO, STATE OF CALIFORNIA, WAS APPROVED BY THE CITY COUNCIL OF THE CITY OF CHULA VISTA AT A REGULAR MEETING THEREOF, HELD ON THE _____ DAY OF _____, 20__, BY ITS RESOLUTION NO. _____.

CITY CLERK
CITY OF CHULA VISTA
STATE OF CALIFORNIA

FILED THIS _____ DAY OF _____, 20__ AT THE HOUR OF _____ O'CLOCK ____ M. IN BOOK _____ PAGE _____ OF MAPS OF ASSESSMENT AND COMMUNITY FACILITIES DISTRICTS IN THE OFFICE OF THE COUNTY RECORDER IN THE COUNTY OF SAN DIEGO, CALIFORNIA.

COUNTY RECORDER
COUNTY OF SAN DIEGO
STATE OF CALIFORNIA

THE LINES AND DIMENSIONS OF EACH LOT OR PARCEL ENCOMPASSED BY THIS MAP SHALL BE THOSE LINES AND DIMENSIONS AS SHOWN ON THE SAN DIEGO COUNTY ASSESSOR'S MAPS.

THE SAN DIEGO COUNTY ASSESSOR'S MAPS SHALL GOVERN FOR ALL DETAILS CONCERNING THE LINES AND DIMENSIONS OF SUCH LOTS OR PARCELS.

MAP REFERENCE NUMBER	ASSESSOR'S PARCEL NUMBER
1	644-060-13

Legend
 ANNEXATION BOUNDARY
 MAP REFERENCE NUMBER



BOUNDARY MAP

An election of the qualified electors of CFD 97-2, Annexation No. 12 was conducted regarding the authorization to levy special taxes within the annexation area



LANDOWNER ELECTION

- Conduct a public hearing
- Canvass the ballots received and declare the results of the election



RECOMMENDATION

Approve resolutions:

- A. Authorizing submittal of levy of special taxes to the qualified electors of certain territory proposed to be annexed to CFD No. 97-2, Improvement Area "C", Annexation No. 12**

- B. Declaring the results of a special election in that territory designated as CFD No. 97-2, Improvement Area "C", Annexation No. 12 and adding such territory to such improvement area**