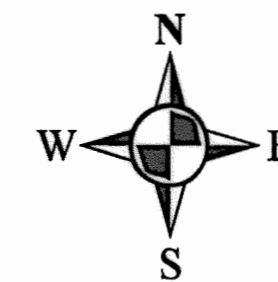
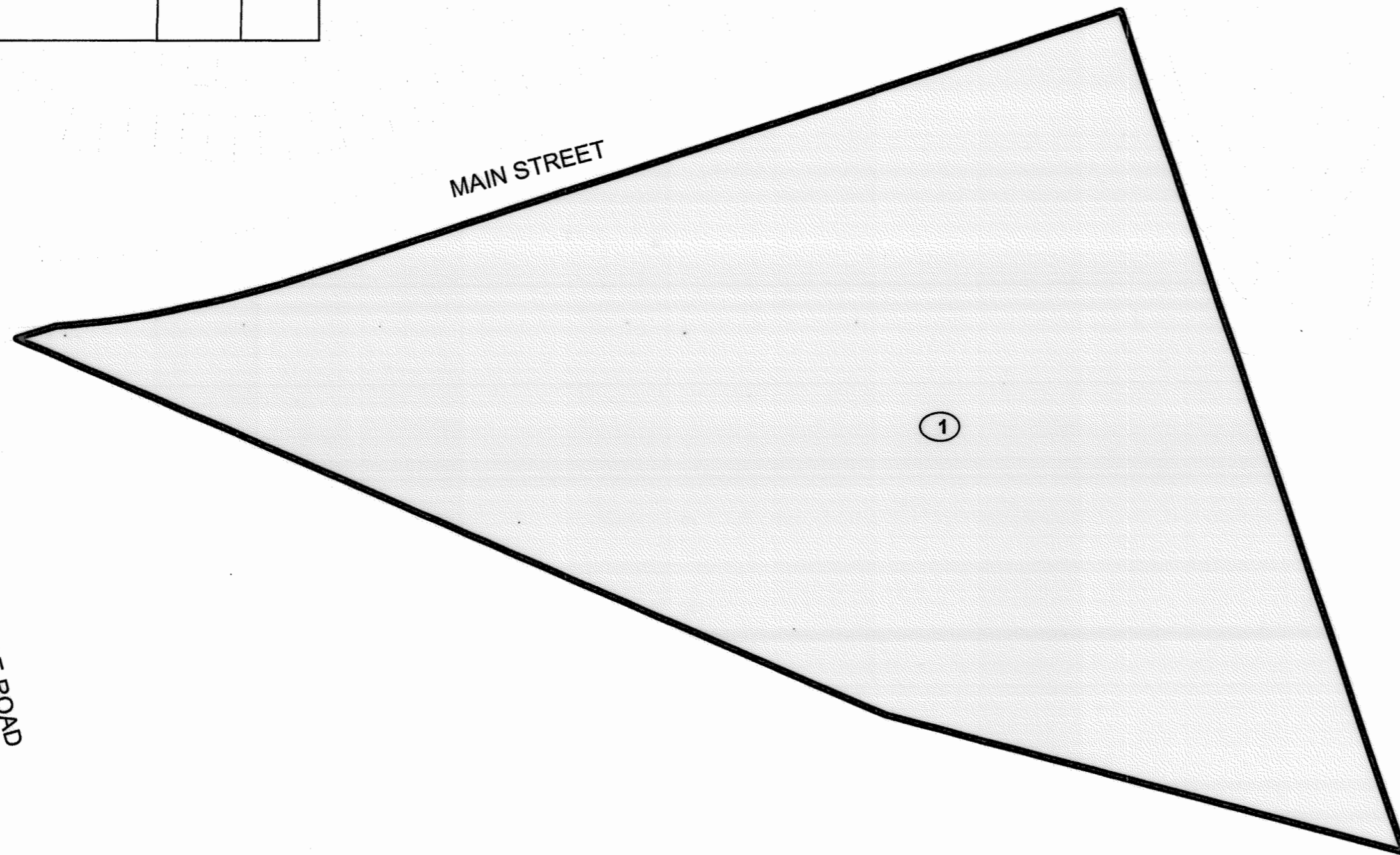
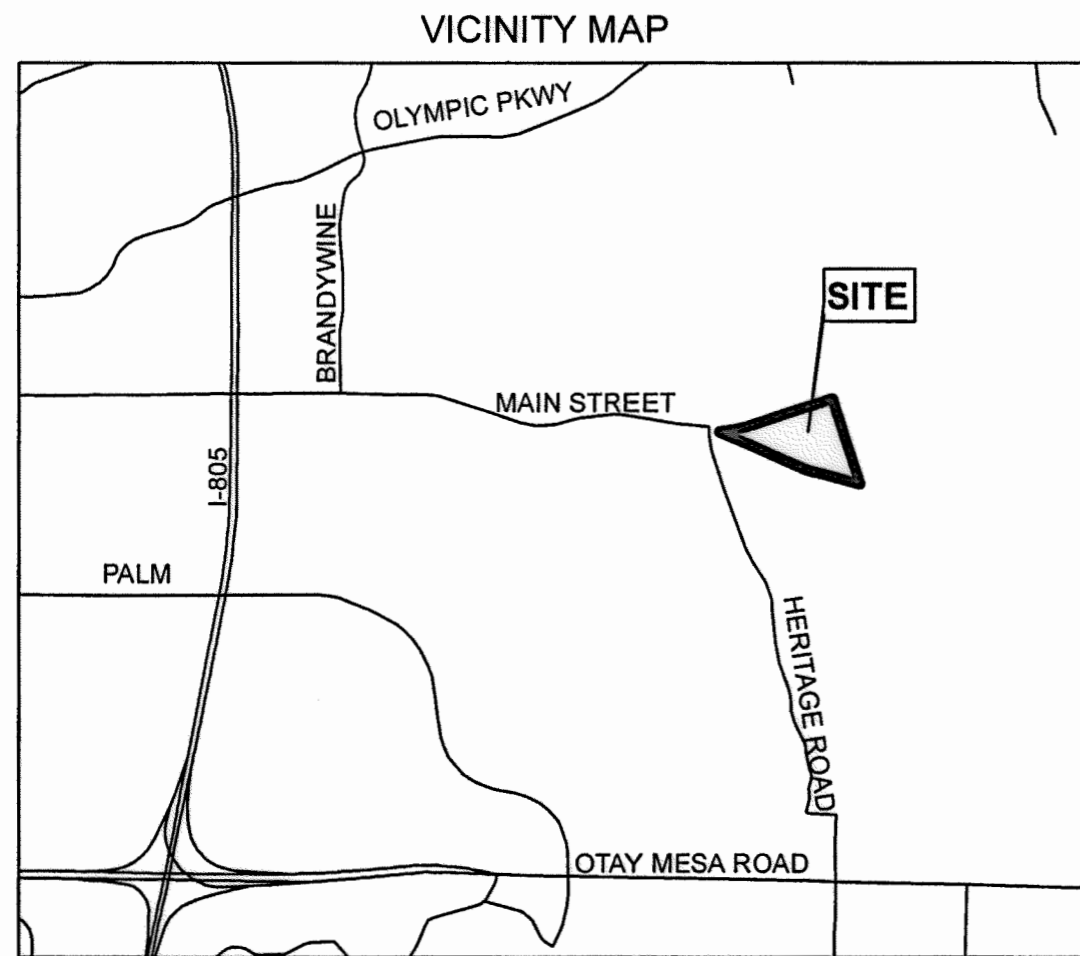


# ANNEXATION MAP NO. 12 OF COMMUNITY FACILITIES DISTRICT NO. 97-2 (PRESERVE MAINTENANCE DISTRICT)

CITY OF CHULA VISTA  
COUNTY OF SAN DIEGO, STATE OF CALIFORNIA



**Legend**

- ANNEXATION BOUNDARY
- MAP REFERENCE NUMBER

FILED IN THE OFFICE OF THE CITY CLERK OF THE CITY OF CHULA VISTA THIS 16th DAY OF March, 2022

*[Signature]*  
CITY CLERK  
CITY OF CHULA VISTA  
STATE OF CALIFORNIA



I HEREBY CERTIFY THAT THE WITHIN MAP SHOWING PROPOSED BOUNDARIES OF ANNEXATION MAP NO. 12 TO COMMUNITY FACILITIES DISTRICT NO. 97-2 (PRESERVE MAINTENANCE DISTRICT) OF THE CITY OF CHULA VISTA, COUNTY OF SAN DIEGO, STATE OF CALIFORNIA, WAS APPROVED BY THE CITY COUNCIL OF THE CITY OF CHULA VISTA AT A REGULAR MEETING THEREOF, HELD ON THE 16th DAY OF March, 2022 BY ITS RESOLUTION NO. 2022-043

*[Signature]*  
CITY CLERK  
CITY OF CHULA VISTA  
STATE OF CALIFORNIA



FILED THIS 29th DAY OF MARCH, 2022 AT THE HOUR OF 12:13 O'CLOCK P.M. IN BOOK 49, PAGE 97 OF MAPS OF ASSESSMENT AND COMMUNITY FACILITIES DISTRICTS IN THE OFFICE OF THE COUNTY RECORDER IN THE COUNTY OF SAN DIEGO, CALIFORNIA. FILE NO. 2022-7000105

\_\_\_\_\_  
COUNTY RECORDER  
COUNTY OF SAN DIEGO  
STATE OF CALIFORNIA

THE LINES AND DIMENSIONS OF EACH LOT OR PARCEL ENCOMPASSED BY THIS MAP SHALL BE THOSE LINES AND DIMENSIONS AS SHOWN ON THE SAN DIEGO COUNTY ASSESSOR'S MAPS.

THE SAN DIEGO COUNTY ASSESSOR'S MAPS SHALL GOVERN FOR ALL DETAILS CONCERNING THE LINES AND DIMENSIONS OF SUCH LOTS OR PARCELS.

MAP REFERENCE NUMBER	ASSESSOR'S PARCEL NUMBER
1	644-060-13

