



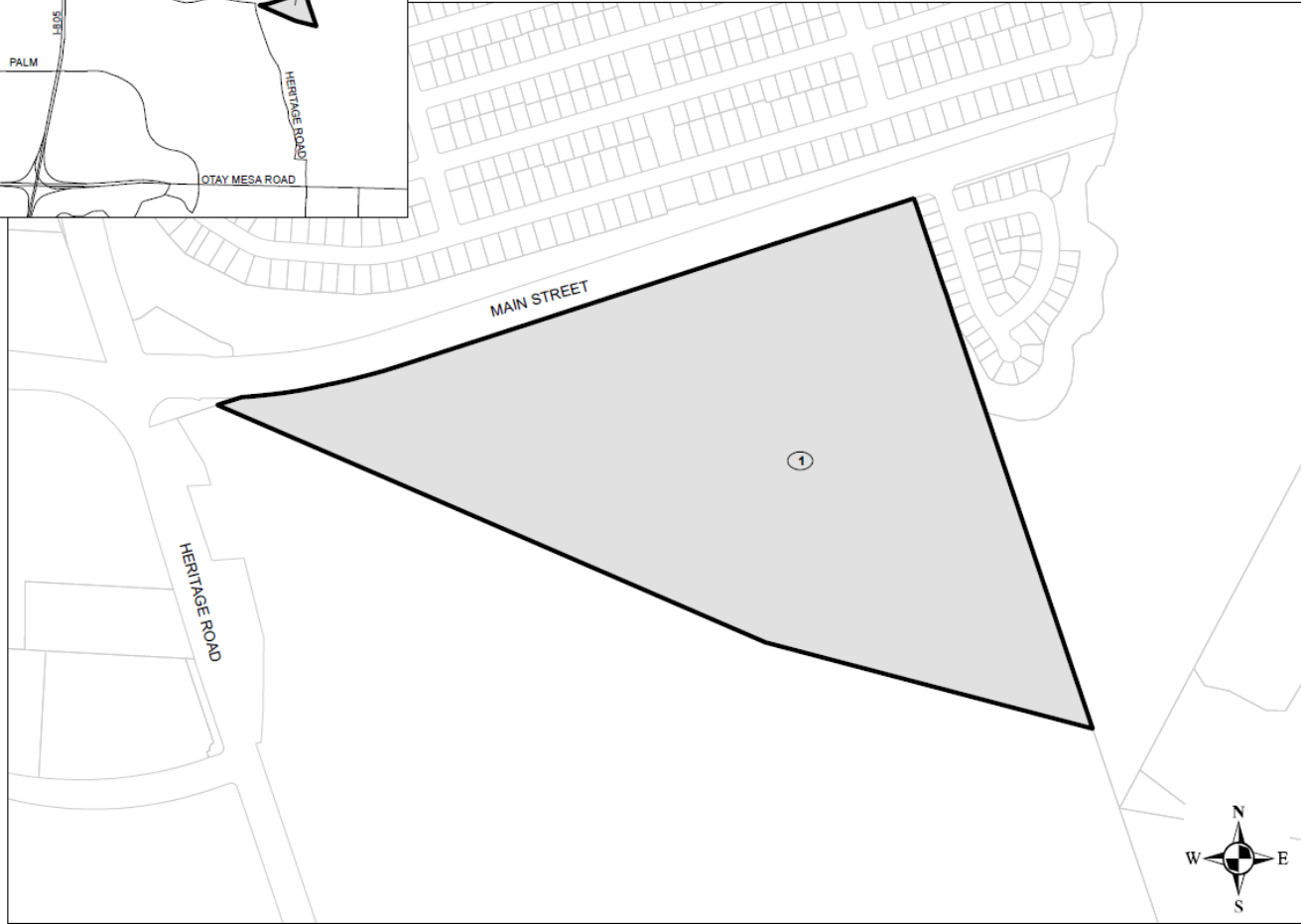
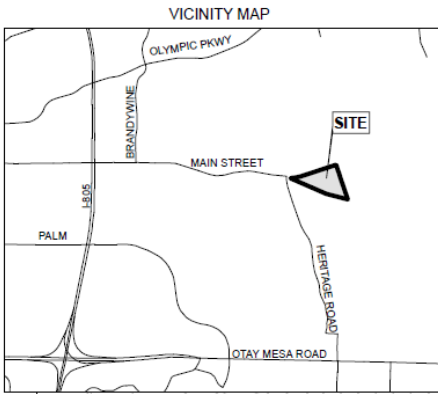
**Otay Ranch Village 3
CFD Annexation No. 18M
Annexation No. 1**

**City Council Meeting
Item 7.2
April 26, 2022**



- TM condition requires Neighborhood R-20 to be annexed into CFD 18M for long-term maintenance of landscaping
- The City Council's action on 3.15.22 initiated formal proceedings (Resolution of Intention) to annex R-20 into CFD 18M, Annexation No. 1

ANNEXATION MAP NO. 1 OF COMMUNITY FACILITIES DISTRICT NO. 18M (OTAY RANCH VILLAGE 3) CITY OF CHULA VISTA COUNTY OF SAN DIEGO, STATE OF CALIFORNIA



FILED IN THE OFFICE OF THE CITY CLERK OF THE CITY OF CHULA VISTA THIS _____ DAY _____, 20__

CITY CLERK
CITY OF CHULA VISTA
STATE OF CALIFORNIA

I HEREBY CERTIFY THAT THE WITHIN MAP SHOWING PROPOSED BOUNDARIES OF ANNEXATION MAP NO. 1 TO COMMUNITY FACILITIES DISTRICT NO. 18M (OTAY RANCH VILLAGE 3) OF THE CITY OF CHULA VISTA, COUNTY OF SAN DIEGO, STATE OF CALIFORNIA, WAS APPROVED BY THE CITY COUNCIL OF THE CITY OF CHULA VISTA AT A REGULAR MEETING THEREOF, HELD ON THE _____ DAY OF _____, 20__, BY ITS RESOLUTION NO. _____

CITY CLERK
CITY OF CHULA VISTA
STATE OF CALIFORNIA

FILED THIS _____ DAY OF _____, 20__ AT THE HOUR OF _____ O'CLOCK ____ M. IN BOOK _____ PAGE _____ OF MAPS OF ASSESSMENT AND COMMUNITY FACILITIES DISTRICTS IN THE OFFICE OF THE COUNTY RECORDER IN THE COUNTY OF SAN DIEGO, CALIFORNIA.

COUNTY RECORDER
COUNTY OF SAN DIEGO
STATE OF CALIFORNIA

THE LINES AND DIMENSIONS OF EACH LOT OR PARCEL ENCOMPASSED BY THIS MAP SHALL BE THOSE LINES AND DIMENSIONS AS SHOWN ON THE SAN DIEGO COUNTY ASSESSOR'S MAPS.

THE SAN DIEGO COUNTY ASSESSOR'S MAPS SHALL GOVERN FOR ALL DETAILS CONCERNING THE LINES AND DIMENSIONS OF SUCH LOTS OR PARCELS.

MAP REFERENCE NUMBER	ASSESSOR'S PARCEL NUMBER
1	644-060-13

Legend

- ANNEXATION BOUNDARY
- MAP REFERENCE NUMBER



BOUNDARY MAP

An election of the qualified electors of CFD 18M, Annexation No. 1 was conducted regarding the authorization to levy special taxes within the annexation area



LANDOWNER ELECTION

- Conduct a public hearing
- Canvass the ballots received and declare the results of the election



RECOMMENDATION

Approve resolutions:

- A. Authorizing submittal of levy of special taxes to the qualified electors of certain territory proposed to be annexed to CFD No. 18M, Annexation No. 1**
- B. Declaring the results of a special election in that territory designated as CFD No. 18M, Annexation No. 1 and adding such territory to such improvement area**