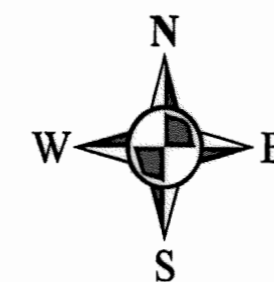
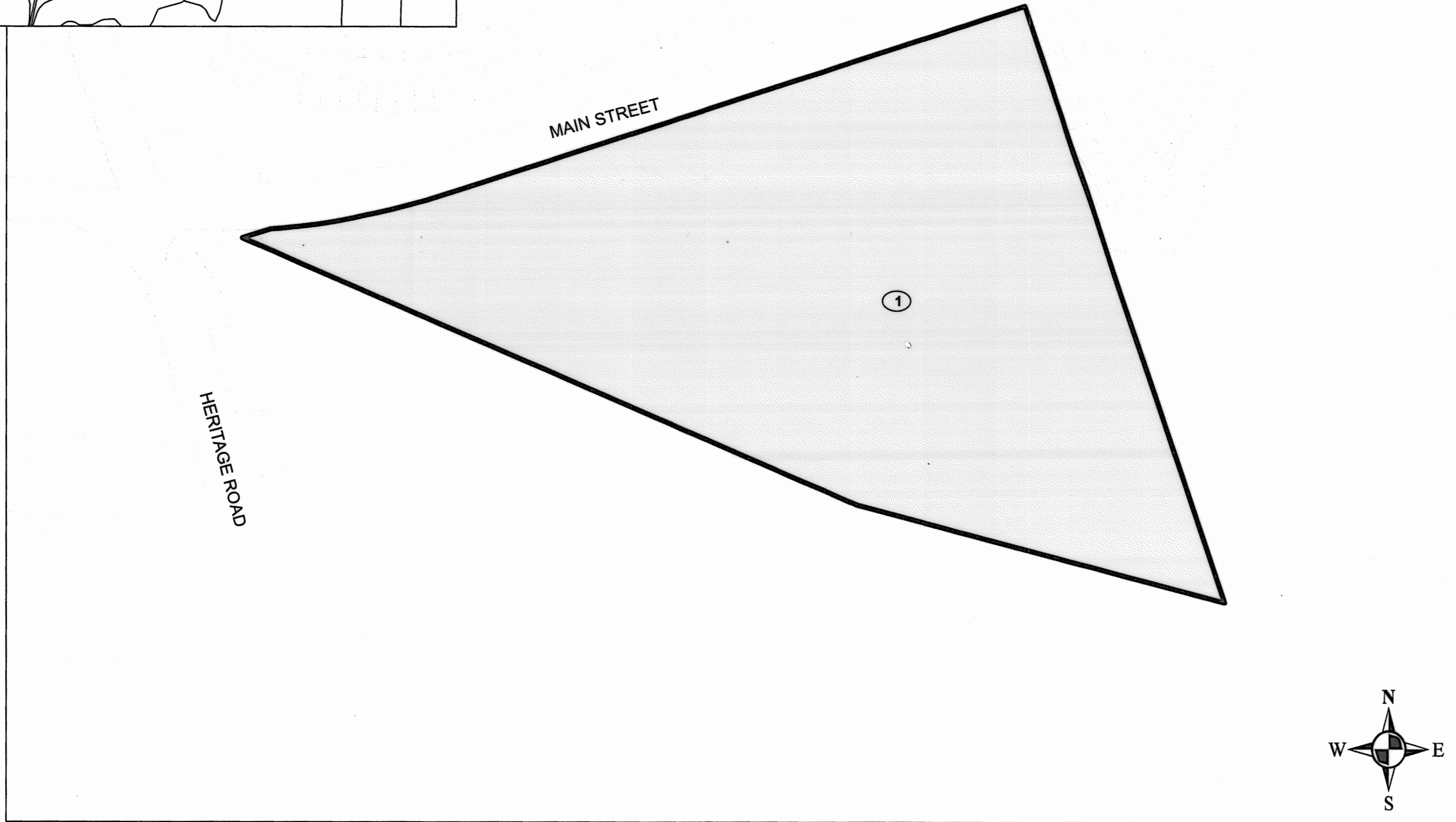
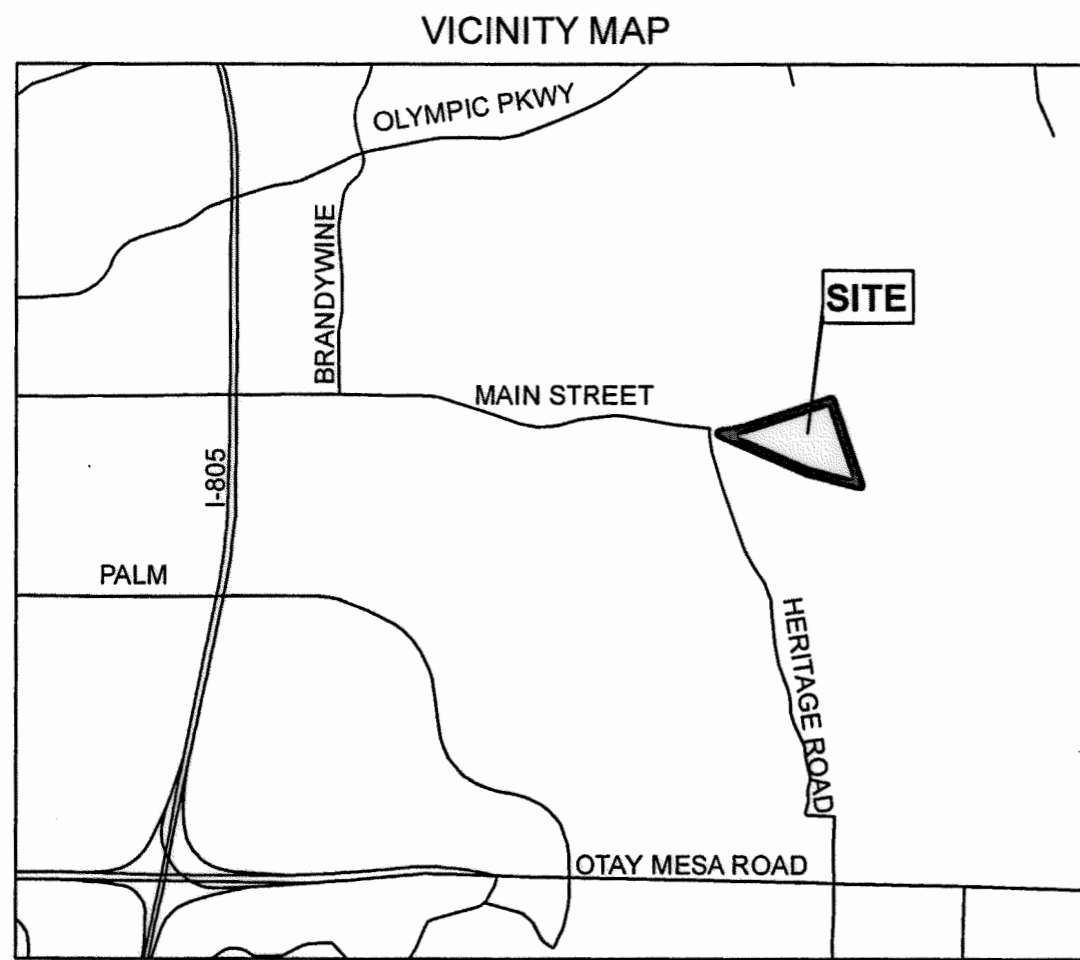





**ANNEXATION MAP NO. 1 OF
COMMUNITY FACILITIES DISTRICT NO. 18M
(OTAY RANCH VILLAGE 3)**
CITY OF CHULA VISTA
COUNTY OF SAN DIEGO, STATE OF CALIFORNIA



Legend

-  ANNEXATION BOUNDARY
-  MAP REFERENCE NUMBER

FILED IN THE OFFICE OF THE CITY CLERK OF THE CITY OF CHULA VISTA THIS 16th DAY OF MARCH, 2022


CITY CLERK
CITY OF CHULA VISTA
STATE OF CALIFORNIA



I HEREBY CERTIFY THAT THE WITHIN MAP SHOWING PROPOSED BOUNDARIES OF ANNEXATION MAP NO. 1 TO COMMUNITY FACILITIES DISTRICT NO. 18M (OTAY RANCH VILLAGE 3) OF THE CITY OF CHULA VISTA, COUNTY OF SAN DIEGO, STATE OF CALIFORNIA, WAS APPROVED BY THE CITY COUNCIL OF THE CITY OF CHULA VISTA AT A REGULAR MEETING THEREOF, HELD ON THE 15th DAY OF March, 2022 BY ITS RESOLUTION NO. 2022-05


CITY CLERK
CITY OF CHULA VISTA
STATE OF CALIFORNIA



FILED THIS 29th DAY OF MARCH, 2022 AT THE HOUR OF 12:13 O'CLOCK P.M. IN BOOK 49, PAGE 98 OF MAPS OF ASSESSMENT AND COMMUNITY FACILITIES DISTRICTS IN THE OFFICE OF THE COUNTY RECORDER IN THE COUNTY OF SAN DIEGO, CALIFORNIA. FILE NO. 2022-7000106

COUNTY RECORDER
COUNTY OF SAN DIEGO
STATE OF CALIFORNIA

THE LINES AND DIMENSIONS OF EACH LOT OR PARCEL ENCOMPASSED BY THIS MAP SHALL BE THOSE LINES AND DIMENSIONS AS SHOWN ON THE SAN DIEGO COUNTY ASSESSOR'S MAPS.

THE SAN DIEGO COUNTY ASSESSOR'S MAPS SHALL GOVERN FOR ALL DETAILS CONCERNING THE LINES AND DIMENSIONS OF SUCH LOTS OR PARCELS.

MAP REFERENCE NUMBER	ASSESSOR'S PARCEL NUMBER
1	644-060-13

