

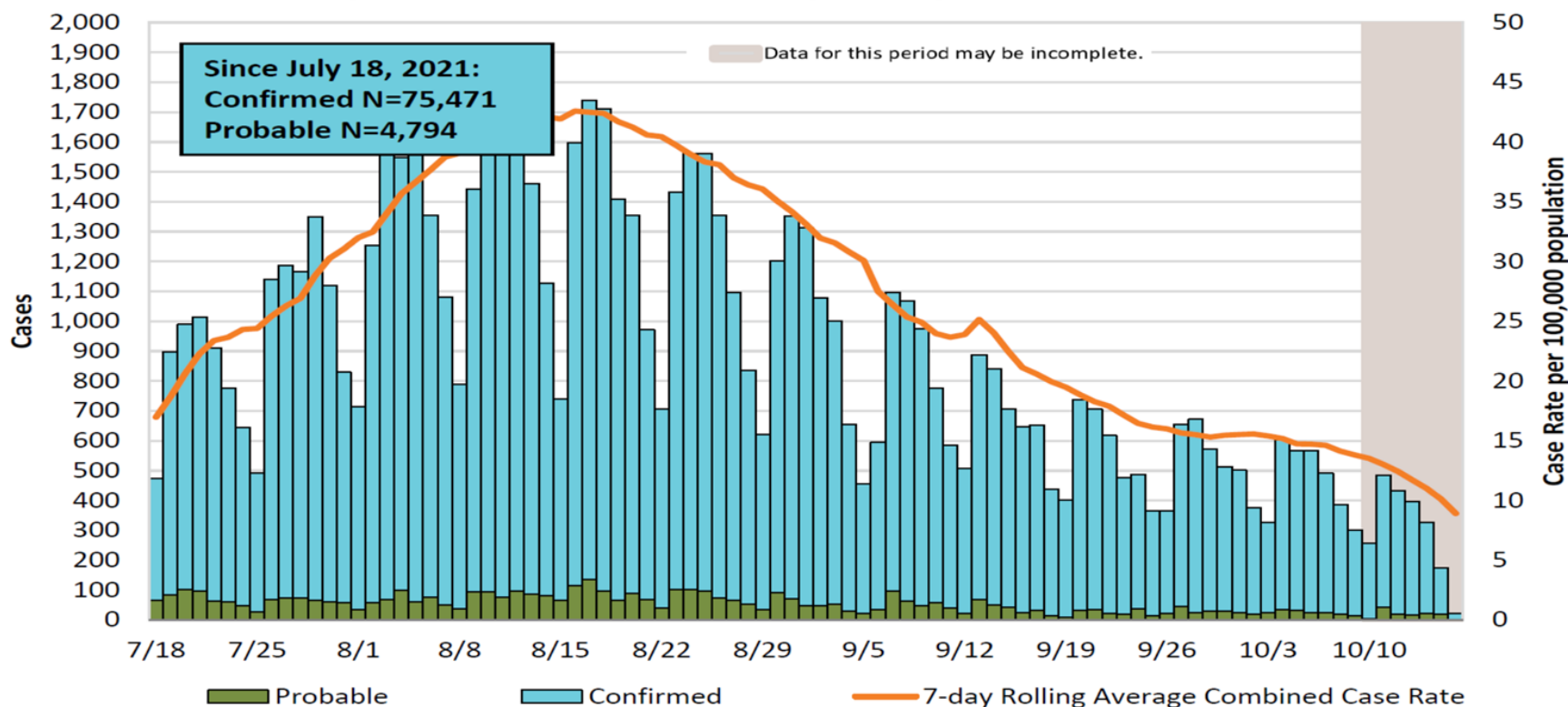
COVID-19 Update 592 Days Since EOC Activation

October 26, 2021



Bottom Line Upfront

Figure 1. COVID-19 Confirmed and Probable Cases and 7-Day Rolling Average Case Rate by Date of Illness Onset*, San Diego County Residents, N=80,265







*When onset date is unavailable, specimen collection date, date of death, or date reported is used instead.

**Probable cases are antigen positive tests received since August 1, 2020.

Case Summary

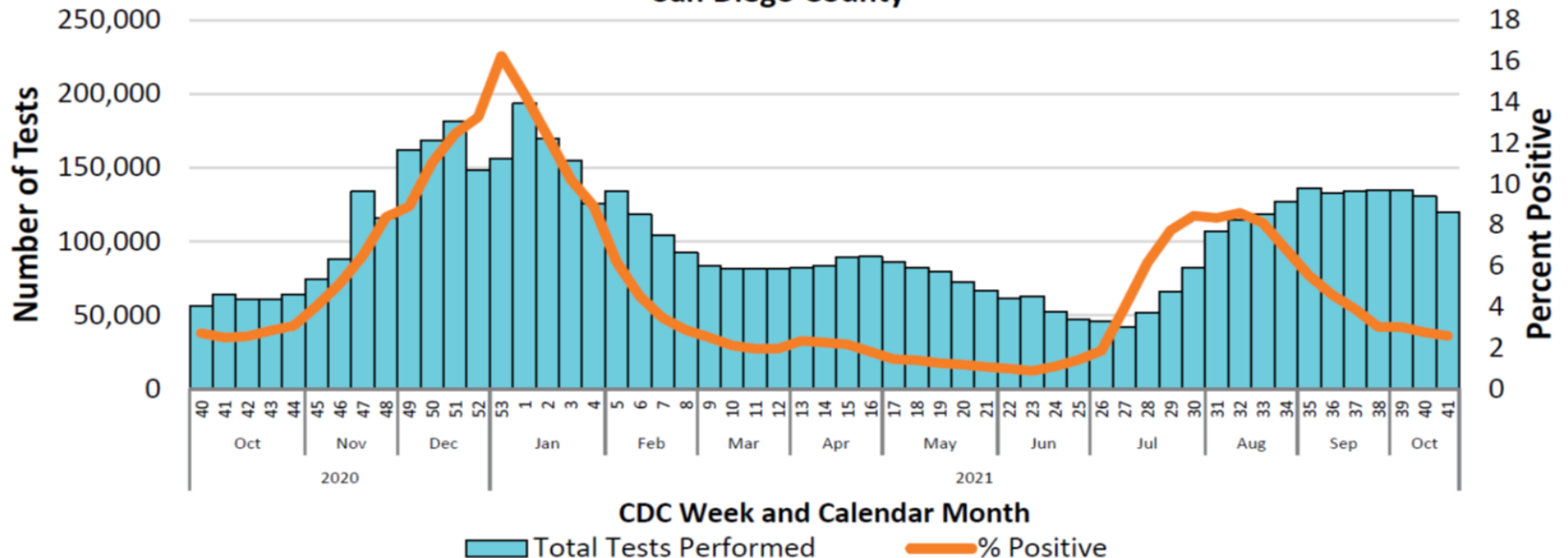
Table 1. Summary of Cases, Deaths, and Outbreaks by Date Reported

	10/10 – 10/16/2021	10/3 – 10/9/2021	Cumulative
Cases	3,624 	3,021	364,637
Avg Daily Cases	518 	432	620
Deaths	50 	32	4,163
Outbreaks	31 	37	2,847

Testing Positivity %

COVID-19 Laboratory Test Positivity Rate – Previous 12 Months

Figure 26. COVID-19 Testing Volume and Positivity by Week of Specimen Collection, San Diego County



Includes PCR tests performed by COSD Public Health, hospital, and reference laboratories and reported via Electronic Laboratory Reporting (ELR) and line lists. Excludes invalid, indeterminate, and unsatisfactory results.

Community Transmission

CDC Levels of Community Transmission



LIVE WELL
SAN DIEGO

San Diego County

Date Updated	Dates of Interest for Analyses	Weekly Case Rate per 100,000 (new cases reported in last 7 days)*	Testing Positivity Percentage**
9/8/2021	9/1-9/7	185.5	5.5%
9/15/2021	9/8-9/14	166.9	4.4%
9/22/2021	9/15-9/21	124.4	3.9%
9/29/2021	9/22-9/28	139.6	3.2%
10/6/2021	9/29-10/5	108.8	3.6%
10/13/2021	10/6-10/12	97.1	2.9%
10/20/2021	10/13- 10/19	93.0	2.8%

CDC Levels of Community Transmission

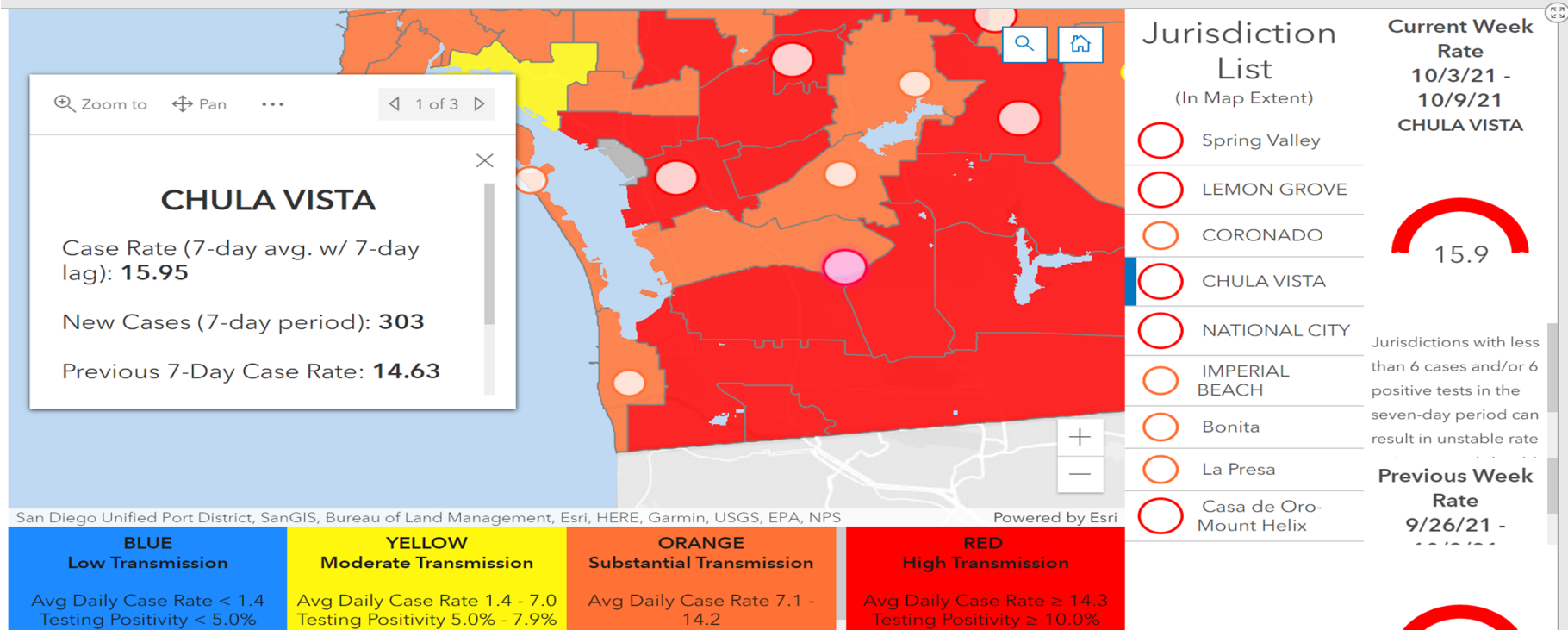
If metrics indicate different levels of transmission, the higher level is selected

	Weekly Case Rate	Testing Positivity
Low Transmission	<10.0	<5.0%
Moderate Transmission	10.0 – 49.9	5.0% - 7.9%
Substantial Transmission	50.0-99.9	8.0% - 9.9%
High Transmission	≥ 100.0	≥ 10.0%

Chula Vista Case Rate

County of San Diego ~ Covid-19 Case Rate by Zip Code / Jurisdiction

Beginning 7/1/21, data will be updated weekly on Wednesdays. Updated 10/20/2021.



-Data are preliminary and subject to change.

-Case rate is the average daily number of cases per 100,000 persons in 7 days, measured using episode date with a 7-day lag. Testing positivity is calculated as the number of positive tests divided by total tests in 7 days, measured using specimen collection date with a 7-day lag. Episode date is the date of illness onset. If the case did not have symptoms or illness onset date is unavailable, the earliest of specimen collection date, date of death, or date reported is used instead.

-Community transmission thresholds are defined by the CDC at [covid.cdc.gov/covid-data-tracker](https://www.cdc.gov/covid-data-tracker). CDC thresholds are weekly rates and were converted to average daily case rates for this dashboard. If the case rates and testing positivity suggest different transmission levels, the higher level is selected.

SD County Vaccination Status

Eligible Population: 2,802,581 San Diegans

San Diego County Residents Vaccinated with At Least One Dose

2,513,428

89.7% 

San Diego County Residents Fully Vaccinated *

2,255,554

80.5% 

*Fully Vaccinated is based on receiving either a single dose of Johnson & Johnson or both doses of Moderna or Pfizer, therefore completing the recommended vaccination series. However, individuals are not considered fully vaccinated until two weeks after completing the series, as defined by the Centers for Disease Control and Prevention (CDC).

Eligible Population expanded to 12 years and older as of 5/13/2021. Eligible Population is San Diego County residents age 12 years and older, or 2,802,581 individuals. The total San Diego County population is 3,347,827. Population estimates are California Department of Finance 2021 Population Estimates, April 2021 release. Individuals vaccinated from some tribal entities and some prisons and federal detention facilities are not included, as these providers do not report to SDIR. Veterans Affairs individuals vaccinated added 4/28/2021. Department of Defense (DoD) individuals vaccinated added 5/6/2021. A small number of individuals vaccinated at DoD San Diego sites are residents of surrounding counties but receive care in San Diego County. San Diego County residents vaccinated with Johnson &

Eligible Population

Goal Population

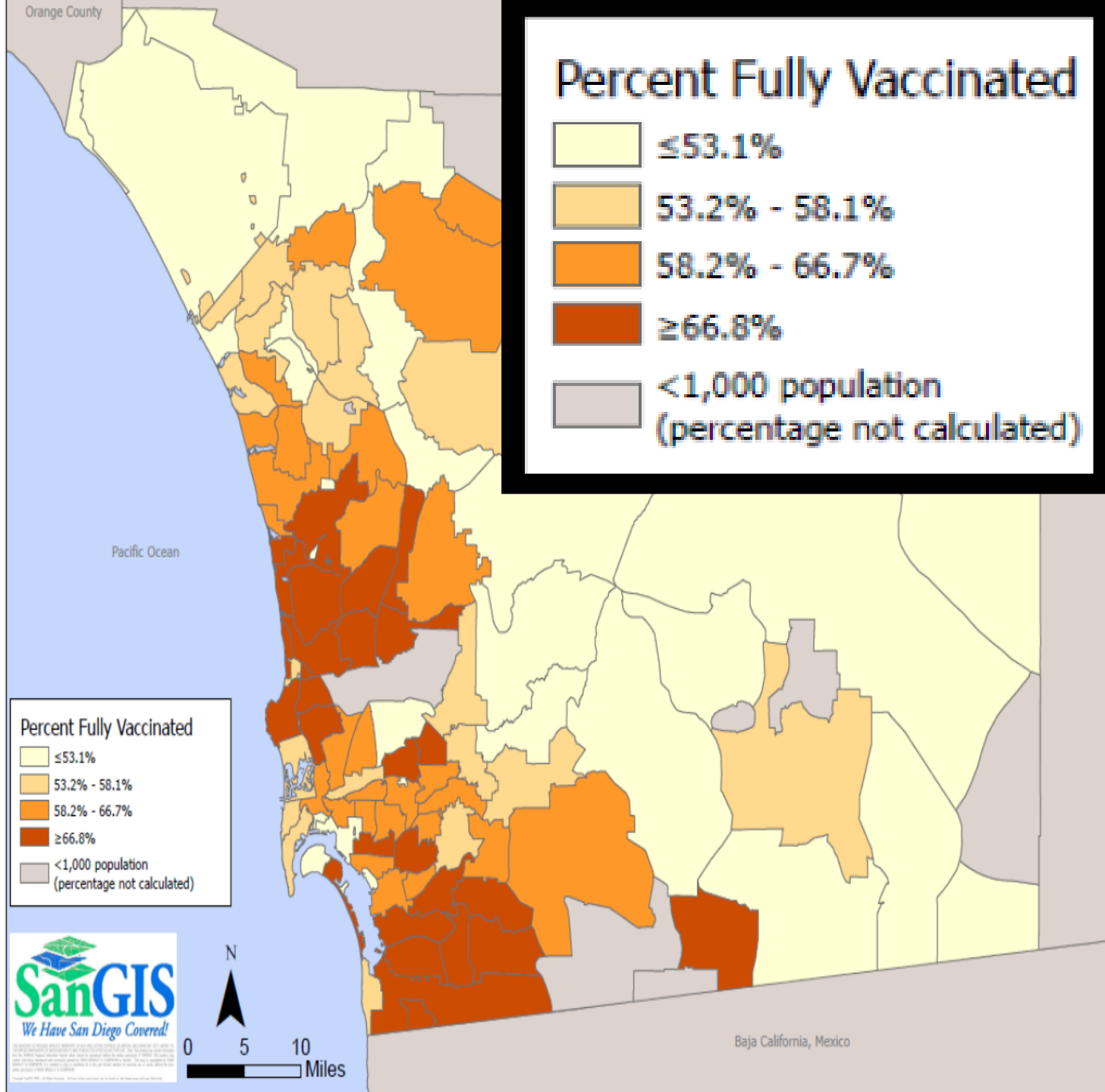


Figure 19. Percentage of the Total Population of San Diego County Residents Who are Fully Vaccinated, by Zip Code of Residence

Only includes vaccines that have been recorded in the San Diego Immunization Registry (SDIR). Some healthcare providers, including Veteran's Affairs, the Department of Defense, some tribal entities, and prisons do not report to SDIR. See this [dashboard](#), updated daily, for more detailed vaccine status information for San Diego County. Data source: San Diego Immunization Registry, SANDAG 2019 Population Estimates (Prepared June 2020).

COVID-19
Vaccinations
City of Chula
Vista Employees
October 26,
2021

Department	% Vaccinated
Administration	100%
Mayor & Council	100%
Library	96%
Economic Development	95%
Information Technology Services	93%
Parks and Recreation	92%
Finance	90%
City Clerk	89%
Engineering	88%
City Attorney's Office	87%
Development Services	87%
Human Resources	86%
Public Works	86%
Animal Care	85%
Fire	83%
CBAG	83%
Police	74%
TOTAL	84%

COVID-19 Vaccine Eligibility

Use this chart to help determine when to give COVID-19 vaccine based on age or health conditions.

Dose		Age:	12-17	18-49	50-64	65+
Pfizer	Primary 2 doses		✓	✓	✓	✓
	Additional (3rd) dose for immunocompromised at least 28 days after 2nd Pfizer dose		✓	✓	✓	✓
	Booster dose of Pfizer or different brand, at least 6 months after 2nd dose of Pfizer					✓
	• Long-term care facility resident			✓	✓	
	• Underlying medical condition or increased risk of social inequities			✓ may receive	✓	
	• Increased risk of exposure from work or institutional setting			✓ may receive	✓ may receive	
Moderna	Primary 2 doses			✓	✓	✓
	Additional (3rd) dose for immunocompromised at least 28 days after 2nd Moderna dose			✓	✓	✓
	Booster dose of Moderna (half-dose) or different brand, at least 6 months after 2nd dose of Moderna					✓
	• Long-term care facility resident			✓	✓	
	• Underlying medical condition or increased risk of social inequities			✓ may receive	✓	
	• Increased risk of exposure from work or institutional setting			✓ may receive	✓ may receive	
Johnson & Johnson	Primary 1 dose			✓	✓	✓
	Booster dose of J&J or different brand, at least 2 months after primary J&J dose			✓	✓	✓

[View Related Guidance and Requirements for more information.](#)

Vaccines at City Hall

- Vaccines are completely FREE
- Chula Vista City Hall, Building C
 - Every Thursday, 1pm - 4pm
 - Appointments available via <https://myturn.ca.gov/>
 - Appointment assistance (619) 476-2397
- Moderna vaccination dates will be added soon.

Chula Vista City Hall (Bldg C) - Pfizer - 1st, 2nd or 3rd dose

1.34 miles away

276 Fourth Ave., Chula Vista, CA 91910

Open 1pm - 4pm Thu

Open from Sep 30 until Nov 18

Additional/Booster COVID-19 vaccine dose available at this clinic

Pfizer Walk-ins welcome

Schedule appointment

Schedule appointment

COVID-19 Testing in Chula Vista



- COVID-19 Testing remains available in Chula Vista
- Former Boys and Girls Club, 1301 Oleander Ave
 - Tues – Sat, 7am-7pm
- Chula Vista City Hall – coming soon
 - Tentative go live date – November 8